

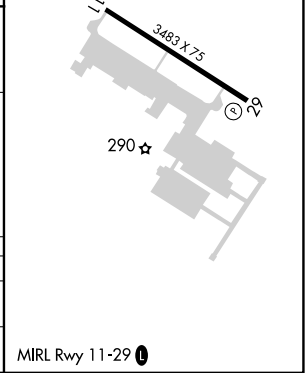
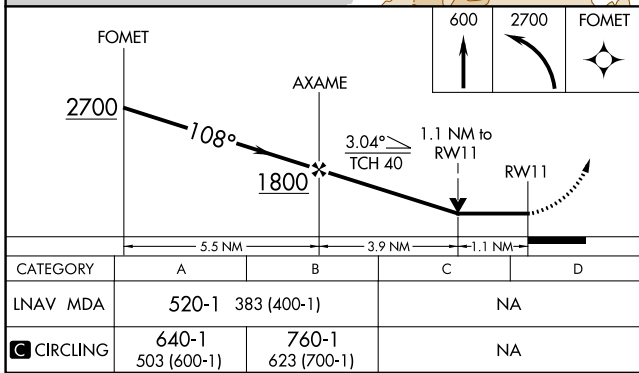
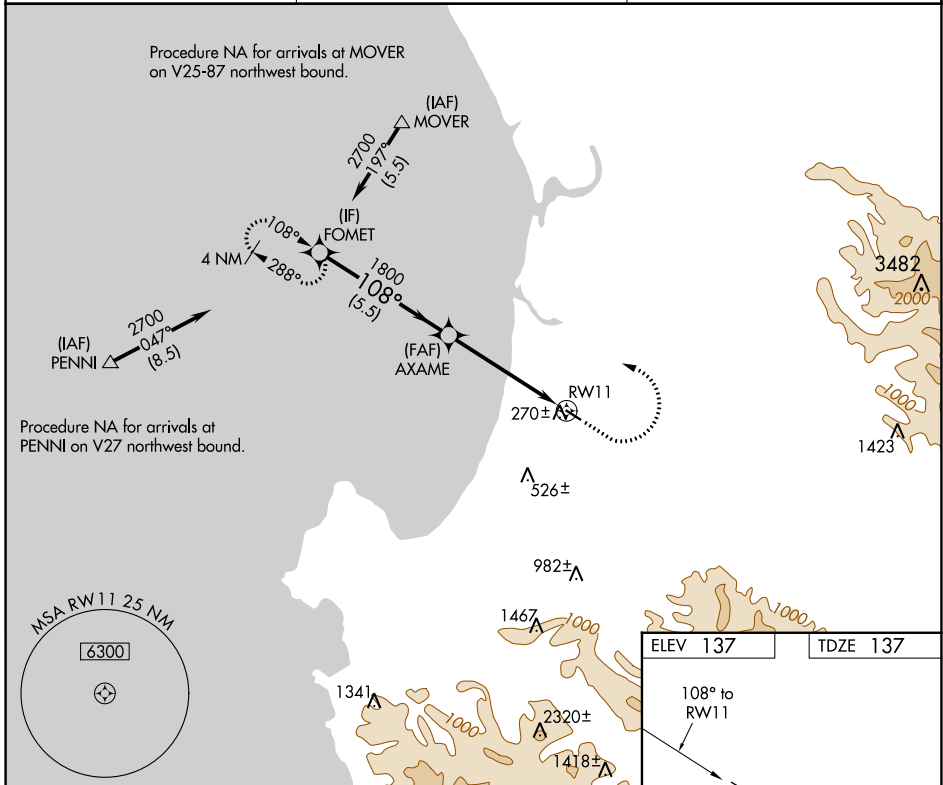
APP CRS	Rwy Idg	<b>3483</b>
<b>108°</b>	TDZE	<b>137</b>
	Apt Elev	<b>137</b>

# RNAV (GPS) RWY 11

MARINA MUNI (OAR)

RNP APCH.	MISSED APPROACH: Climb to 600, then climbing left turn to 2700 direct FOMET and hold, continue climb-in-hold to 2700.
Rwy 11 helicopter visibility reduction below 3/4 SM NA.	

AWOS-3PT <b>134.025</b>	NORCAL APP CON <b>133.0 251.15</b>	UNICOM <b>122.7 (CTAF) 0</b>
----------------------------	---------------------------------------	---------------------------------



SW-2, 22 FEB 2024 to 21 MAR 2024

SW-2, 22 FEB 2024 to 21 MAR 2024