

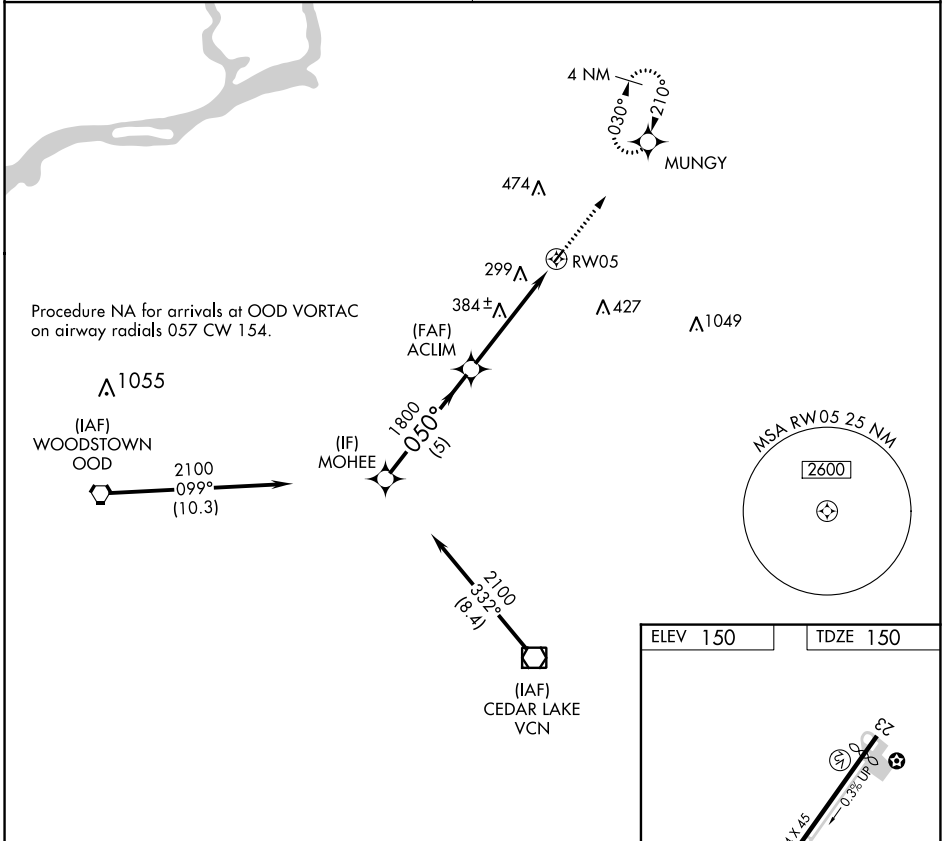
| | | |
|-------------|----------|-------------|
| APP CRS | Rwy Idg | 2354 |
| 050° | TDZE | 150 |
| | Apt Elev | 150 |

RNAV (GPS) RWY 5

PINE VALLEY (19N)

| | |
|---|--|
| RNP APCH. | MISSED APPROACH: Climb to 2000 direct MUNGUY and hold. |
| <p>▼ Rwy 5 helicopter visibility reduction below 1 SM NA.</p> <p>▲ NA Procedure NA at night. Use Mount Holly altimeter setting; when not received use Philadelphia Intl altimeter setting and increase all MDA 20 feet.</p> | |

| | |
|--|---------------------------------|
| MC GUIRE APP CON 126.475 363.8 | UNICOM 123.0 (CTAF) 1 |
|--|---------------------------------|



NE-2, 22 FEB 2024 to 21 MAR 2024

NE-2, 22 FEB 2024 to 21 MAR 2024

| | | | |
|----------|-----------------------------|-------------|--------|
| MOHEE | Visual Segment - Obstacles. | 2000 | MUNGUY |
| 2100 | 050° | 1800 | RWY 5 |
| 5 NM | | 5 NM | |
| CATEGORY | A | B | C |
| LNAV MDA | 740-1 | 590 (600-1) | NA |

