

BERLIN, NEW JERSEY

AL-5496 (FAA)

23278

VOR/DME VCN 115.2 Chan 99	APP CRS 013°	Rwy Idg TDZE Apt Elev N/A N/A 150
---	------------------------	---

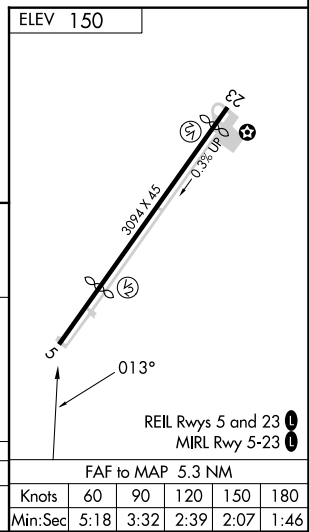
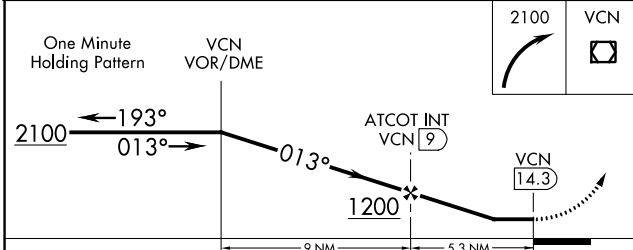
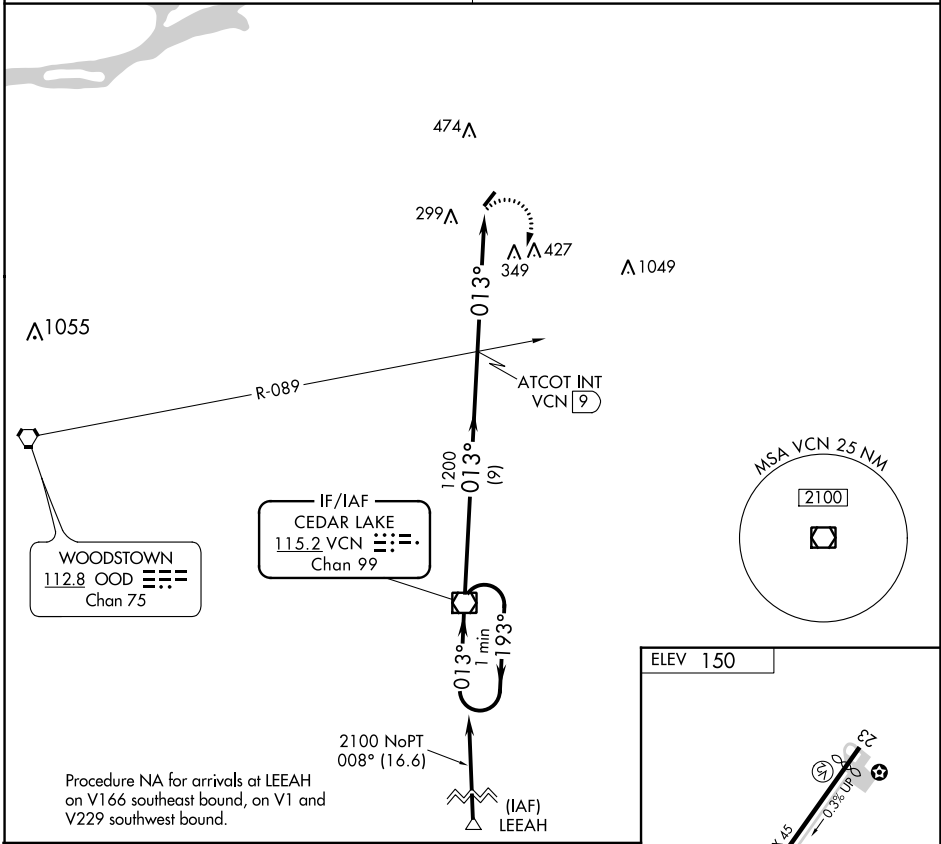
VOR-B
PINE VALLEY (19N)

⚠ Procedure NA at night. Visibility reduction by helicopters NA. Use Mount Holly altimeter setting, when not received, use Philadelphia Intl altimeter setting and increase MDA 20 feet.

⚠ NA MISSED APPROACH: Climbing right turn to 2100 direct VCN VOR/DME and hold.

MC GUIRE APP CON
126.475 363.8

UNICOM
123.0 (CTAF)



CATEGORY	A	B	C	D	FAF to MAP 5.3 NM					
CIRCLING	900-1 750 (800-1)	NA			Knots	60	90	120	150	180
					Min:Sec	5:18	3:32	2:39	2:07	1:46

BERLIN, NEW JERSEY
Amdt 2B 12OCT17

39°47'N-74°57'W

PINE VALLEY (19N)
VOR-B

NE-2, 22 FEB 2024 to 21 MAR 2024

NE-2, 22 FEB 2024 to 21 MAR 2024