

WAAS CH 82411 W06A	APP CRS 061°	Rwy Idg TDZE Apt Elev	4471 2068 2087
--	------------------------	-----------------------------	---

RNAV (GPS) RWY 6

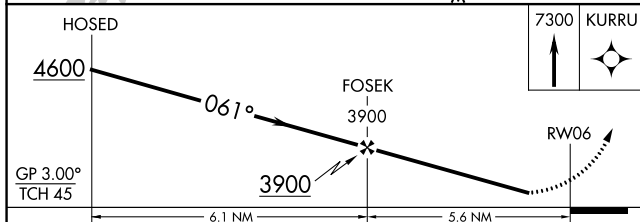
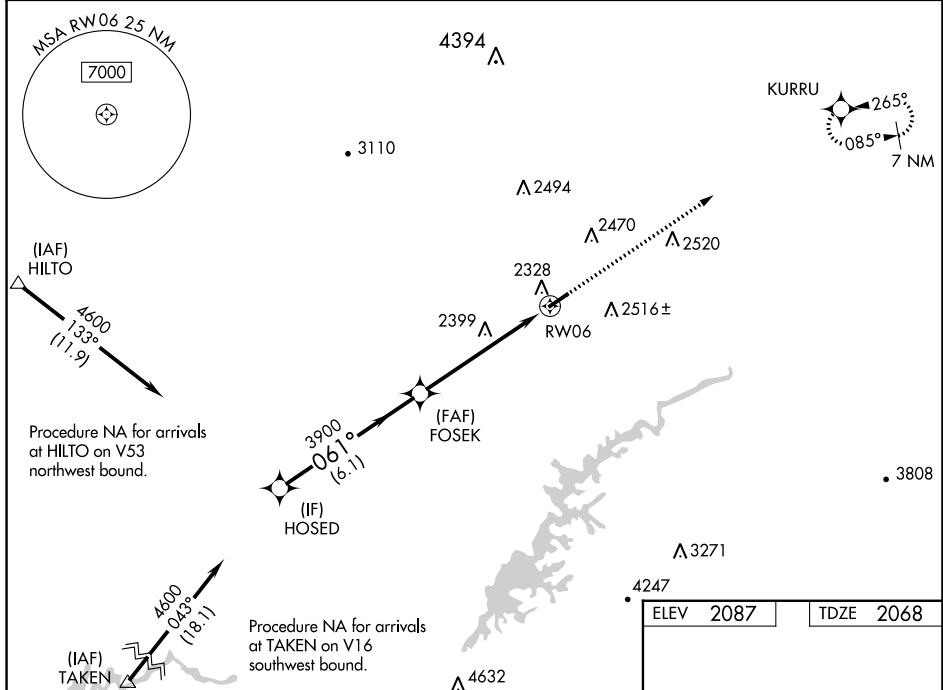
VIRGINIA HIGHLANDS (VJI)

RNP APCH.

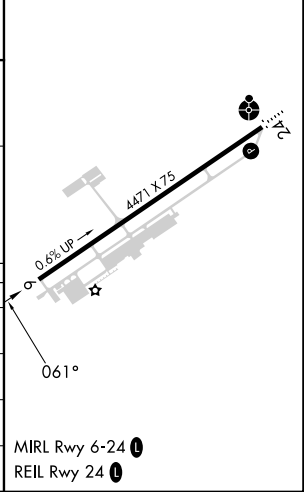
⚠ Rwy 6 helicopter visibility reduction below 1 SM NA. For uncompensated Baro-VNAV systems, LNAV/VNAV NA below -19°C or above 54°C.

MISSED APPROACH:
Climb to 7300 direct
KURRU and hold,
continue climb-in-hold
to 7300.

AWOS-3 128.125	TRI-CITY APP CON ★ 125.25 349.0	UNICOM 122.8 (CTAF)
--------------------------	---	-------------------------------



ELEV 2087	TDZE 2068
-----------	-----------



CATEGORY	A	B	C	D
LPV DA		2443-1¼	375 (400-1¼)	
LNAV/VNAV DA		2489-1¼	421 (500-1¼)	
LNAV MDA	2660-1	592 (600-1)	2660-1¾	592 (600-1¾)
CIRCLING	2860-1	773 (800-1)	2860-2¼ 773 (800-2¼)	3080-3 993 (1000-3)

NE-3, 22 FEB 2024 to 21 MAR 2024

NE-3, 22 FEB 2024 to 21 MAR 2024