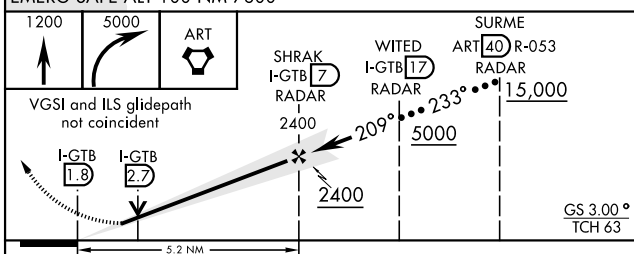
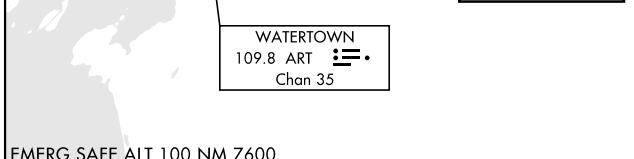
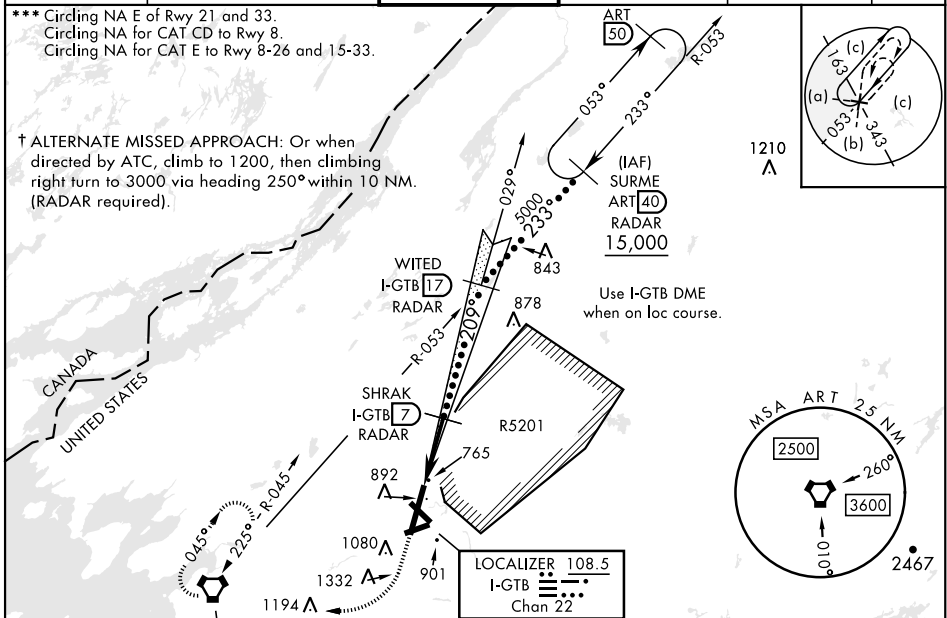


HI-ILS or LOC RWY 21

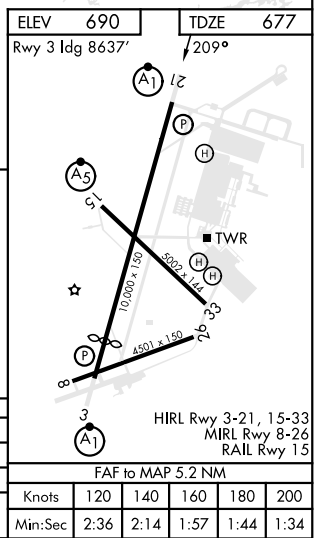
LOC/DME I-GTB 108.5 Chan 22	APCH CRS 209°	Rwy ldg 10,000 TDZE 677 Arpt Elev 690	AL-5754 [USA]	WHEELER-SACK AAF (KGTB)
---	-------------------------	--	---------------	-------------------------

DME or RADAR required.	ALSIF-1 	† MISSED APPROACH: Climb to 1200, then climbing right turn to 5000 direct ART VORTAC and hold. Continue climb in hold to 5000.
* When ALS inop, increase vis to ¾ mile. ** When ALS inop, increase CAT C vis to 1 mile, CAT DE vis to 1¼ miles.		

ATIS 119.525	APP CON 124.875 307.125	TOWER 118.75 290.25	GND CON 121.9 229.8	CLNC DEL 121.9	ASR/PAR
------------------------	-----------------------------------	-------------------------------	-------------------------------	--------------------------	---------



CATEGORY	C	D	E
S-ILS 21*	877-½	200	(200-½)
S-LOC 21**	1040-¾	363	(400-¾)
CIRCLING ***	1220-1½	1380-2¼	1640-3
	530 (600-1½)	690 (700-2¼)	950 (1000-3)



HI-ILS or LOC RWY 21

NE-2, 22 FEB 2024 to 21 MAR 2024

NE-2, 22 FEB 2024 to 21 MAR 2024