

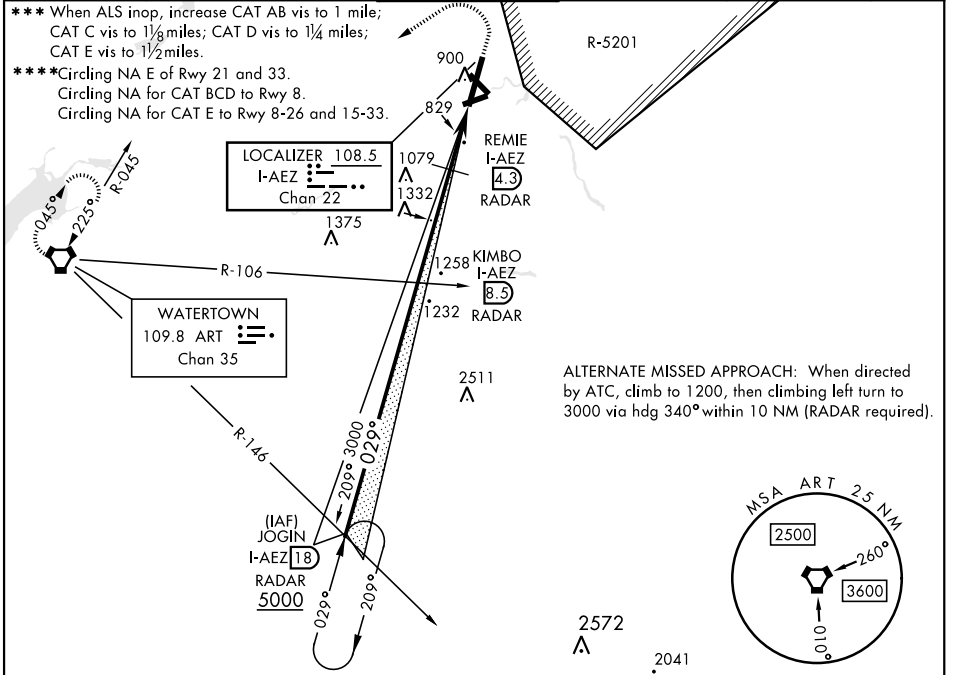
FORT DRUM, NEW YORK

# ILS or LOC RWY 3

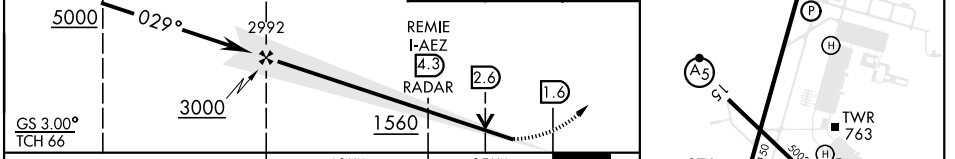
LOC/DME I-AEZ <b>108.5</b> Chan <b>22</b>	APCH CRS <b>029°</b>	Rwy ldg <b>8637</b> TDZE <b>685</b> Arpt Elev <b>690</b>	AL-5754 [USA]	WHEELER-SACK AAF (KGTB)
---	-------------------------	--	---------------	-------------------------

DME or RADAR required. RADAR required for procedure entry.	ALS-F1 	MISSED APPROACH: Climb to 1200, then climbing left turn to 5000 direct ART VORTAC and hold. Continue climb-in-hold to 5000.
--	------------	---

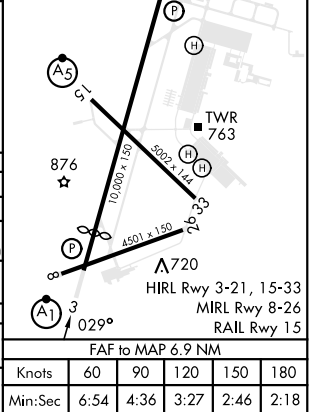
ATIS <b>119.525</b>	APP CON <b>124.875 307.125</b>	TOWER <b>118.75 290.25</b>	GND CON <b>121.9 229.8</b>	CLNC DEL <b>121.9</b>	ASR/PAR
------------------------	-----------------------------------	-------------------------------	-------------------------------	--------------------------	---------



JOGIN I-AEZ 18 RADAR	KIMBO I-AEZ 8.3 RADAR	1200	5000	ART	ELEV 690	TDZE 685
----------------------	-----------------------	------	------	-----	----------	----------



CATEGORY	A	B	C	D	E
S-ILS 3 *	957-1/2		272	(300-1/2)	
S-LOC 3 **	1560-1/2 875 (900-1/2)	1560-3/4 875 (900-3/4)	1560-2 875 (900-2)	1560-2 1/4 875 (900-2 1/4)	1560-2 1/2 875 (900-2 1/2)
**** CIRCLING	1560-1 1/4 870 (900-1 1/4)		1560-2 1/2 870 (900-2 1/2)	1560-2 3/4 870 (900-2 3/4)	1640-3 950 (1000-3)
DME MINIMUMS					
S-LOC 3 ***	1080-1/2 395 (400-1/2)		1080-3/4 395 (400-3/4)	1080-1 395 (400-1)	
**** CIRCLING	1200-1 510 (600-1)		1220-1 1/2 530 (600-1 1/2)	1380-2 1/4 690 (700-2 1/4)	1640-3 950 (1000-3)



FORT DRUM, NEW YORK 44° 03'N-75° 43'W WHEELER-SACK AAF (KGTB)

Amtd 3 23MAR23

# ILS or LOC RWY 3

NE-2, 22 FEB 2024 to 21 MAR 2024

NE-2, 22 FEB 2024 to 21 MAR 2024

FAF to MAP 6.9 NM					
Knots	60	90	120	150	180
Min:Sec	6:54	4:36	3:27	2:46	2:18