

FORT DRUM, NEW YORK

RNAV (GPS) RWY 21

WAAS CH 63007 W21A	APCH CRS 209°	Rwy ldg 10,000 TDZE 677 Arprt Elev 690
--------------------------	------------------	-------------------------------------------------------

AL-5754 (USA)

WHEELER SACK AAF (KGTB)

RNP APCH - GPS

ALSIF-1

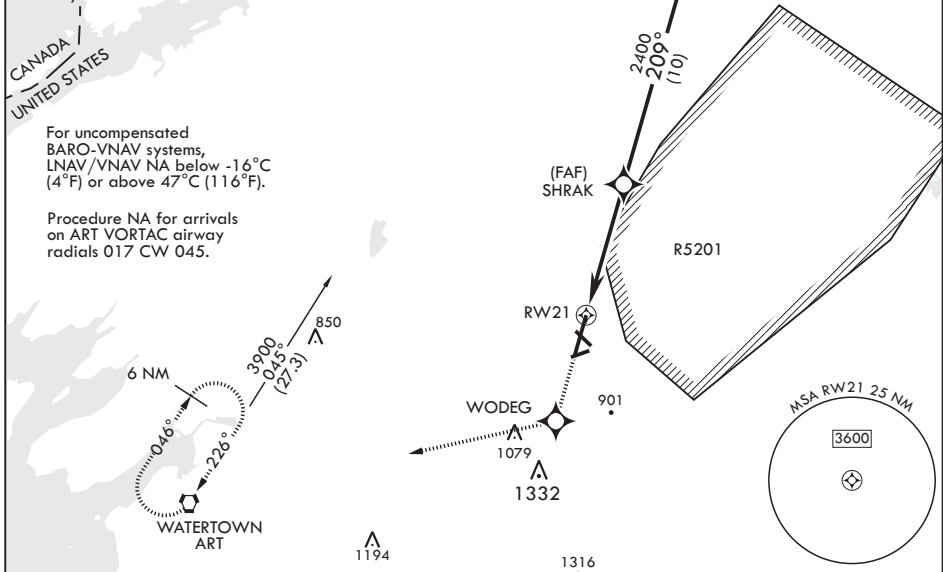
▲ * When ALS inop, increase vis to 3/4 mile.
** When ALS inop, increase vis to 1 1/4 miles.



MISSED APPROACH: Climb to 3000 direct WODEG then right turn 270° track to ART VORTAC and hold.

ATIS 119.525	APP CON/DEP CON 124.875 307.125	TOWER 118.75 290.25	GND CON 121.9 229.8	CLNC DEL 121.9	ASR/PAR
-----------------	------------------------------------	------------------------	------------------------	-------------------	---------

*** When ALS inop, increase CAT AB vis to 1 mile, CAT C vis to 1 1/8 miles, CAT DE vis to 1 1/4 miles.
**** Circling NA E of Rwy 21 and 33. Circling NA for CAT BCD to Rwy 8. Circling NA for CAT E to Rwy 8-26 and 15-33.



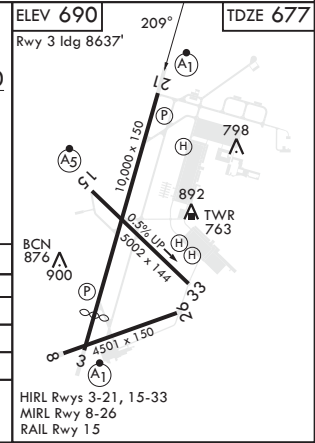
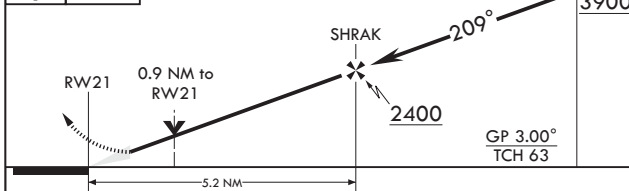
For uncompensated BARO-VNAV systems, LNAV/VNAV NA below -16°C (4°F) or above 47°C (116°F).

Procedure NA for arrivals on ART VORTAC airway radials 017 CW 045.

NE-2, 22 FEB 2024 to 21 MAR 2024

NE-2, 22 FEB 2024 to 21 MAR 2024

3000	WODEG	VGSI and RNAV glidepath not coincident.	WITED	ELEV 690	TDZE 677
------	-------	-----------------------------------------	-------	----------	----------



CATEGORY	A	B	C	D	E
LPV DA*	877-1/2		200	(200-1/2)	
LNAV/VNAV DA**	1056-3/4		379	(400-3/4)	
LNAV MDA***	1080-1/2	403 (400-1/2)	1080-3/4	403	(400-3/4)
CIRCLING****	1200-1 510 (600-1)	1220-1 530 (600-1)	1220-1 1/2 530 (600-1 1/2)	1380-2 1/4 690 (700-2 1/4)	1640-3 950 (1000-3)

FORT DRUM, NEW YORK

44°03'N - 75°43'W

WHEELER SACK AAF (KGTB)

Amdt 2 20APR23
TERPS

RNAV (GPS) RWY 21