

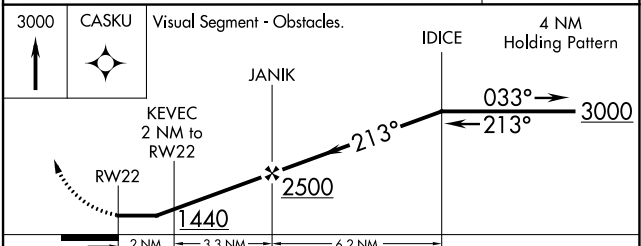
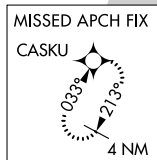
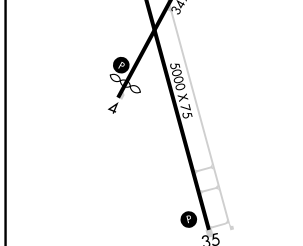
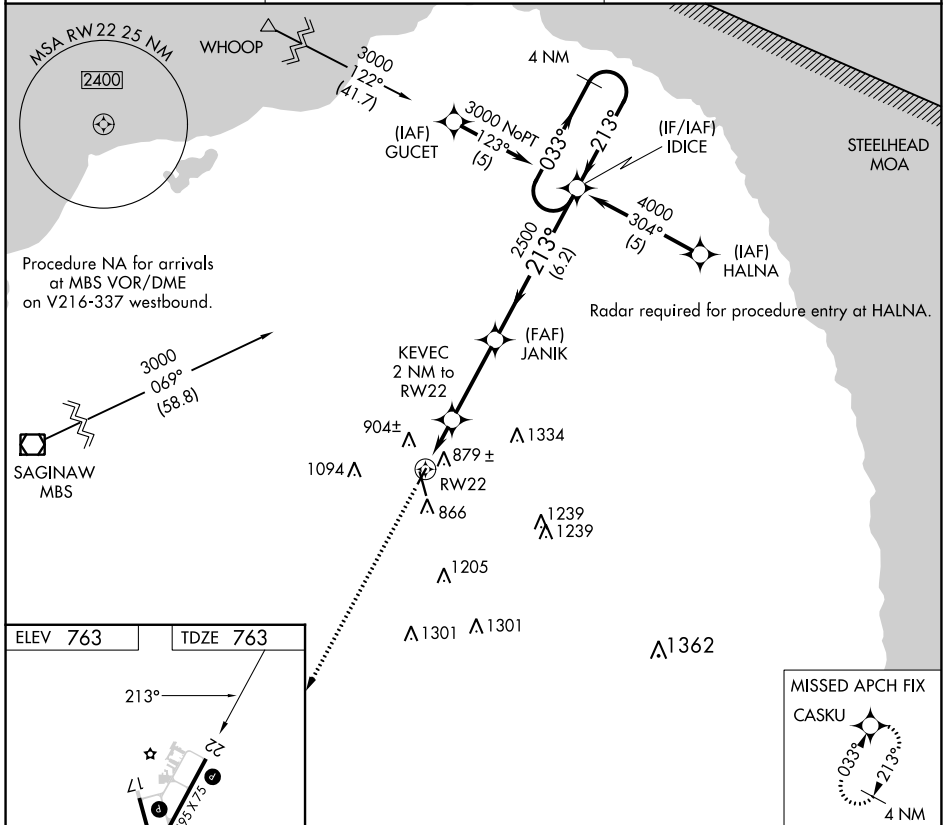
APP CRS	Rwy Idg	3495
213°	TDZE	763
	Apt Elev	763

RNAV (GPS) RWY 22

HURON COUNTY MEML (BAX)

RNP APCH.	MISSED APPROACH: Climb to 3000 direct CASKU and hold.
<p>▼ When local altimeter setting not received, use MBS Intl altimeter setting and increase all MDA 140 feet; increase LNAV Cat C visibility ½ SM. Procedure NA at night. Rwy 22 helicopter visibility reduction below 1 SM NA.</p>	

AWOS-3 118.6	CLEVELAND CENTER 127.7 290.425	UNICOM 123.075 (CTAF) 0
------------------------	--	-----------------------------------



REIL Rwy 17 and 35 0	MIRL Rwy 4-22 and 17-35 0			
CATEGORY	A	B	C	D
LNAV MDA	1140-1	377 (400-1)		NA

EC-1, 22 FEB 2024 to 21 MAR 2024

EC-1, 22 FEB 2024 to 21 MAR 2024