

KUSSO ONE DEPARTURE (RNAV)

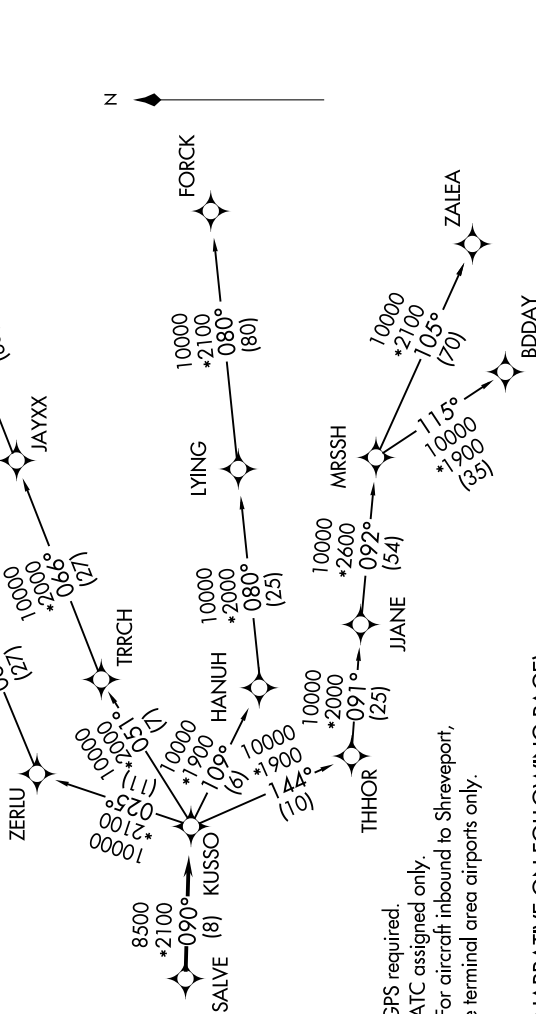
SC-2, 22 FEB 2024 to 21 MAR 2024

CTAF
122.8
REGIONAL DEP CON
135.975 379.9

**TOP ALTITUDE:
ASSIGNED BY ATC**

TAKEOFF MINIMUMS

Rwy 15: Standard.
Rwy 33: 300-1/2 or standard with minimum
climb of 422' per NM to 1200.



NOTE: RADAR required.
 NOTE: RNAV 1.
 NOTE: DME/DME/IRU or GPS required.
 NOTE: BDDAY Transition: ATC assigned only.
 NOTE: MRSSH Transition: For aircraft inbound to Shreveport,
 Jackson and Monroe terminal area airports only.

(NARRATIVE ON FOLLOWING PAGE)

NOTE: Chart not to scale.

SC-2, 22 FEB 2024 to 21 MAR 2024

KUSSO ONE DEPARTURE (RNAV)