

# SWABR ONE DEPARTURE (RNAV)

CTAF  
122.8  
REGIONAL DEP CON  
135.975 379.9

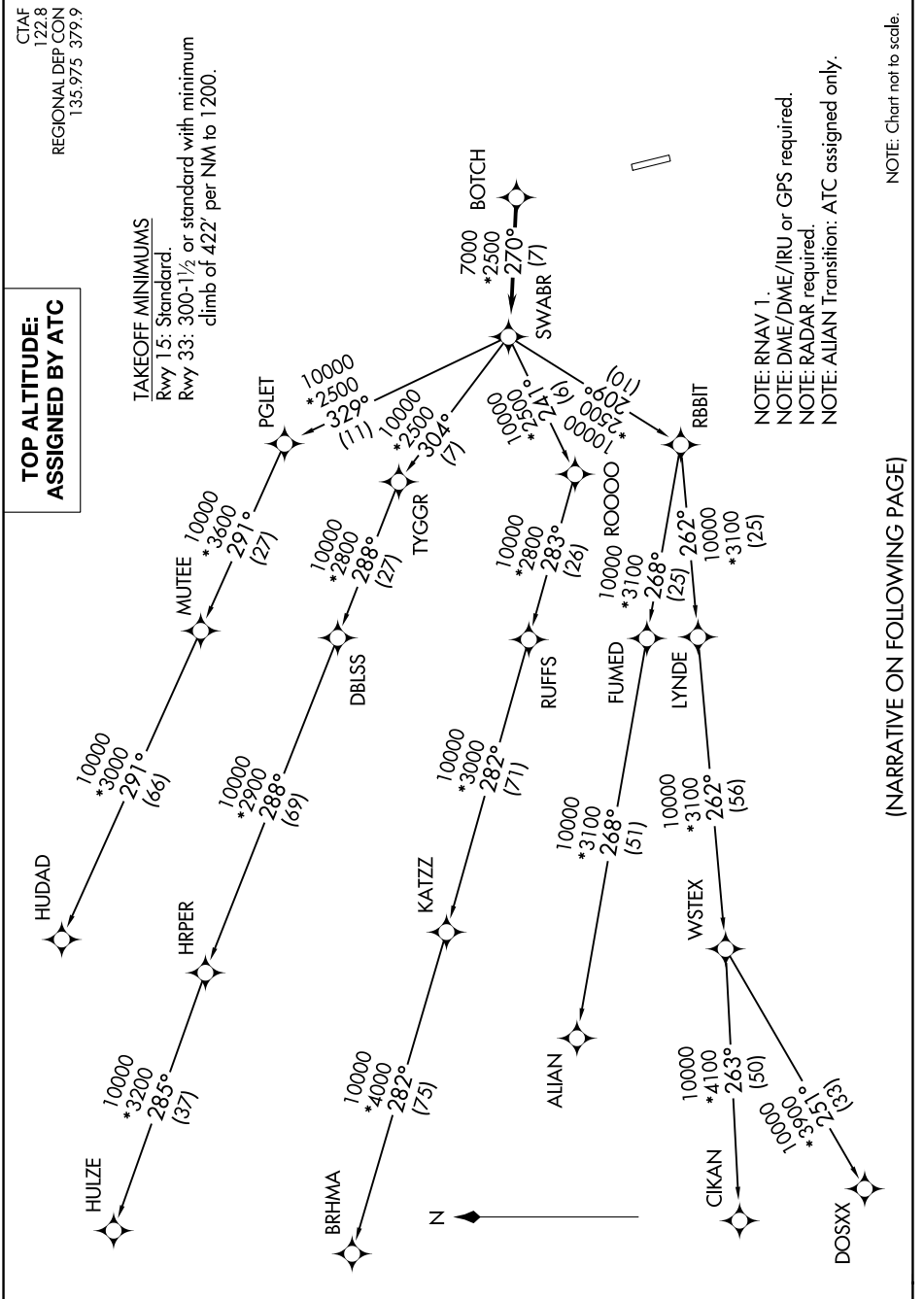
## TOP ALTITUDE: ASSIGNED BY ATC

TAKEOFF MINIMUMS  
Rwy 15: Standard.  
Rwy 33: 300-1½ or standard with minimum  
climb of 422' per NM to 1200.

NOTE: RNAV 1.  
NOTE: DME/DME/IRU or GPS required.  
NOTE: RADAR required.  
NOTE: ALIAN Transition: ATC assigned only.

NOTE: Chart not to scale.

SC-2, 22 FEB 2024 to 21 MAR 2024



# SWABR ONE DEPARTURE (RNAV)

(NARRATIVE ON FOLLOWING PAGE)

SC-2, 22 FEB 2024 to 21 MAR 2024