

APP CRS	Rwy Idg	<b>4001</b>
<b>224°</b>	TDZE	<b>570</b>
	Apt Elev	<b>570</b>

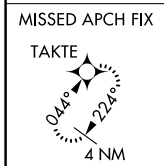
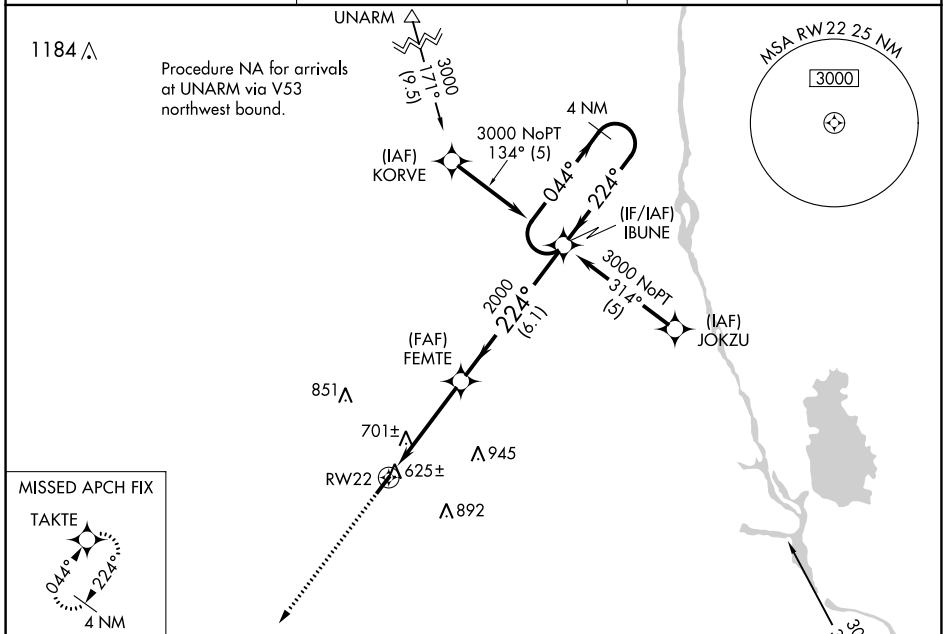
# RNAV (GPS) RWY 22

NEWBERRY COUNTY (EOE)

**⚠** DME/DME RNP-0.3 NA. When local altimeter setting not received, use Greenwood County altimeter setting and increase all MDA 80 feet. **⚠** VDP NA when using Greenwood County altimeter setting. Helicopter visibility reduction below 3/4 SM NA.

MISSED APPROACH: Climb to 3000 direct TAKTE and hold.

AWOS-3 <b>124.275</b>	COLUMBIA APP CON <b>133.4 285.6</b>	UNICOM <b>122.8 (CTAF) 0</b>
--------------------------	--	---------------------------------



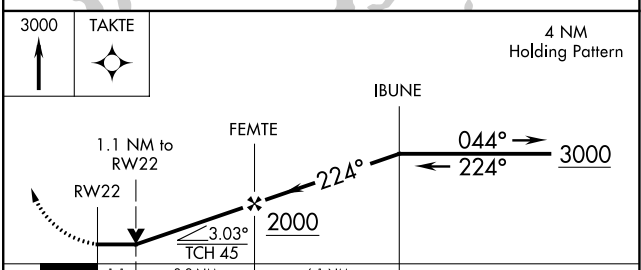
ELEV 570	TDZE 570
----------	----------



Procedure NA for arrivals at WIDER via V53 southeast bound.

WIDER  $\Delta$

4 NM Holding Pattern



CATEGORY	A	B	C	D
LNAV MDA	960-1	390 (400-1)	NA	
CIRCLING	1080-1 510 (600-1)	1160-1 590 (600-1)	NA	

MIRL Rwy 4-22 **0**

SE-2, 22 FEB 2024 to 21 MAR 2024

SE-2, 22 FEB 2024 to 21 MAR 2024