

APP CRS	Rwy Idg	5799
169°	TDZE	889
	Apt Elev	892

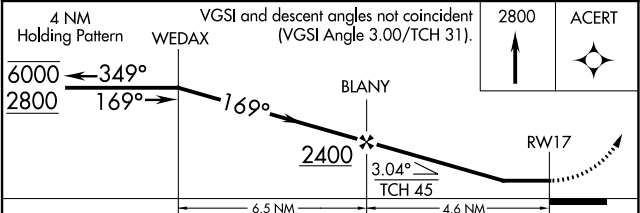
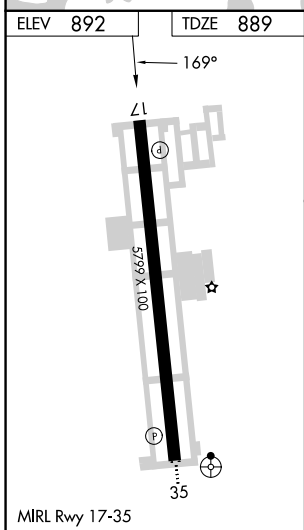
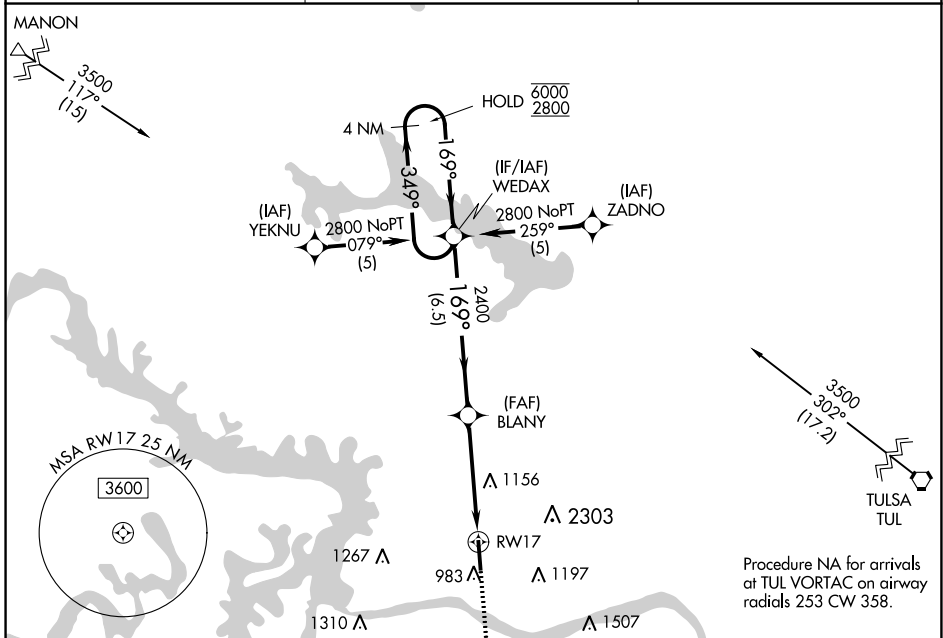
RNAV (GPS) RWY 17

WILLIAM R POGUE MUNI (OWP)

RNP APCH. MISSED APPROACH: Climb to 2800 direct ACERT and hold.

▼ Rwy 17 helicopter visibility reduction below 1 SM NA. Procedure NA at night. Circling NA for Cat C east of Rwy 17-35.

AWOS-3T 118.325	TULSA APP CON 124.0 338.3	UNICOM 122.7 (CTAF)
---------------------------	-------------------------------------	-------------------------------



CATEGORY	A	B	C	D
LNVA MDA	1420-1	531 (600-1)	1420-1½ 531 (600-1½)	NA
<input checked="" type="checkbox"/> CIRCLING	1440-1	548 (600-1)	1440-1½ 548 (600-1½)	NA

SC-1, 22 FEB 2024 to 21 MAR 2024

SC-1, 22 FEB 2024 to 21 MAR 2024