

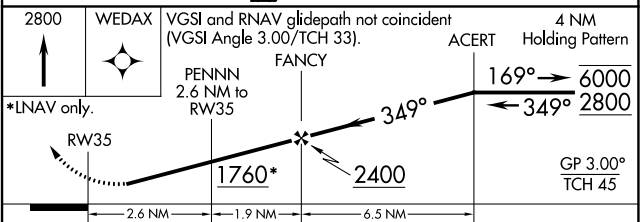
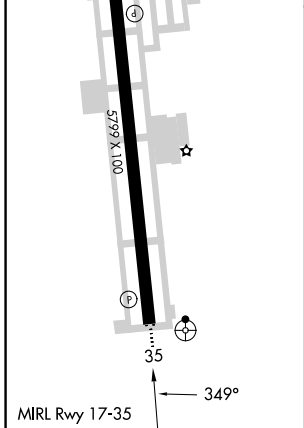
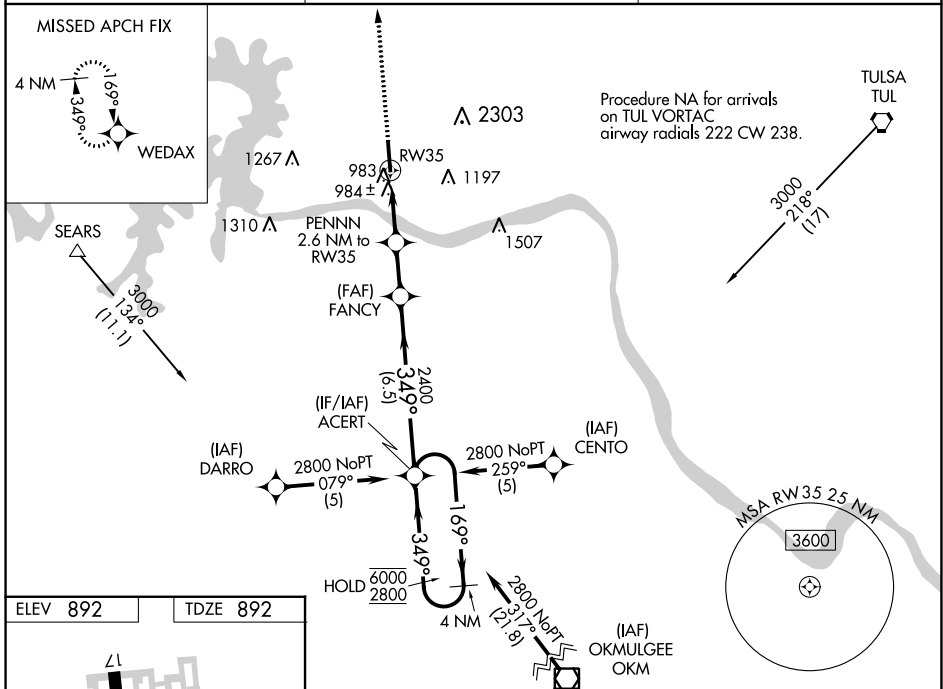
WAAS CH 57912 W35A	APP CRS 349°	Rwy Idg TDZE Apt Elev	5799 892 892
--	------------------------	-----------------------------	---

RNAV (GPS) RWY 35

WILLIAM R POGUE MUNI (OWP)

RNP APCH. ▼ Rwy 35 helicopter visibility reduction below 1 SM NA. For uncompensated Baro-VNAV systems, LNAV/VNAV NA below -16°C or above 54°C. Procedure NA at night. Circling NA for Cat C east of Rwy 17-35. Inop table does not apply.	ODALS 	MISSED APPROACH: Climb to 2800 direct WEDAX and hold.
--	-----------	---

AWOS-3T 118.325	TULSA APP CON 124.0 338.3	UNICOM 122.7 (CTAF)
---------------------------	-------------------------------------	-------------------------------



CATEGORY	A	B	C	D
LPV DA	1202-1	310 (400-1)		NA
LNAV/VNAV DA	1317-1½	425 (500-1½)		NA
LNAV MDA	1240-1	348 (400-1)		NA
CIRCLING	1440-1	548 (600-1)	1440-1½ 548 (600-1½)	NA

SC-1, 22 FEB 2024 to 21 MAR 2024

SC-1, 22 FEB 2024 to 21 MAR 2024