

VOR/DME HYK 112.6 Chan 73	APP CRS 006°	Rwy Idg TDZE 940 Apt Elev 948
---	------------------------	---

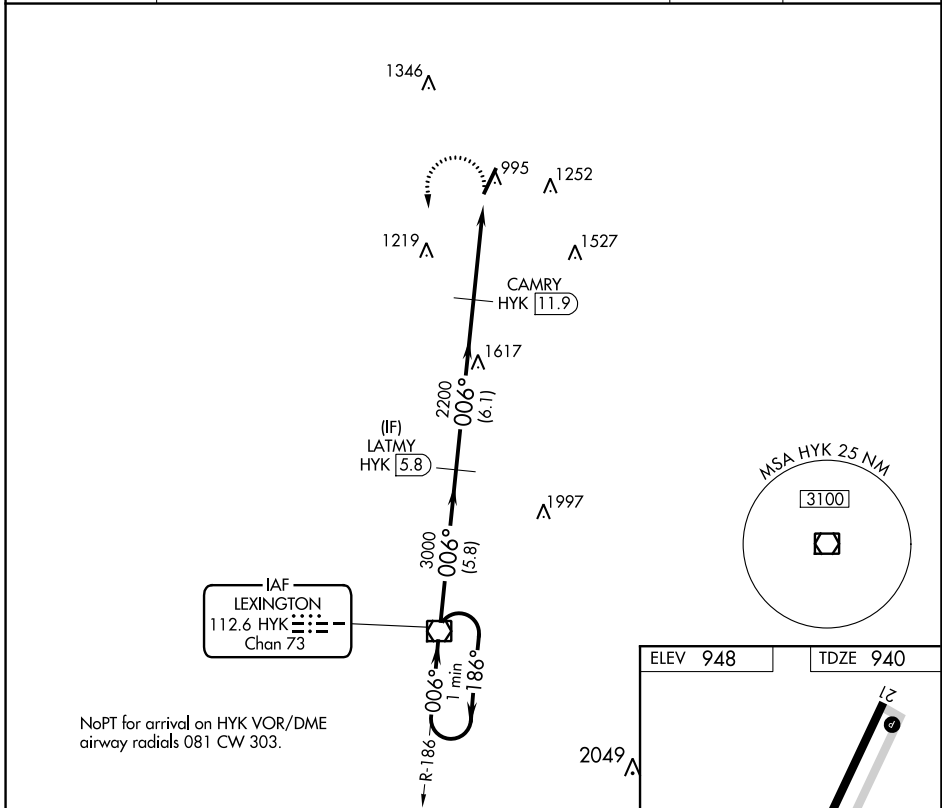
VOR RWY 3

GEORGETOWN-SCOTT COUNTY RGNL (27K)

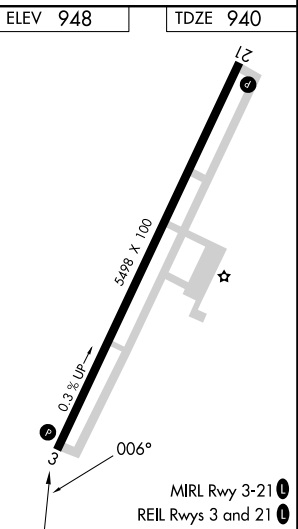
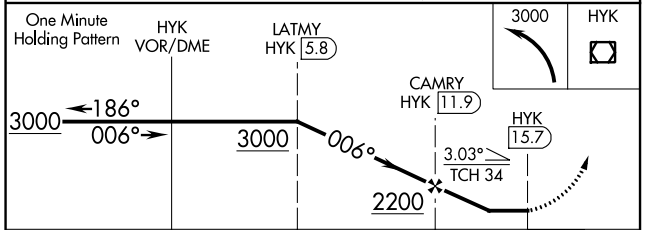
▼ DME required.
▲ NA When local altimeter setting not received, use Lexington altimeter setting and increase all MDA 40 feet; increase Circling Cat D visibility ¼ mile.

MISSED APPROACH: Climbing left turn to 3000 direct HYK VOR/DME and hold.

AWOS-3 119.975	LEXINGTON APP CON 120.15 259.3 (040°-220°) 120.75 298.9 (221°-039°)	CLNC DEL 127.425	UNICOM 123.0 (CTAF) 0
--------------------------	--	----------------------------	--



NoPT for arrival on HYK VOR/DME airway radials 081 CW 303.



CATEGORY	A	B	C	D
S-3	1480-1 540 (600-1)	1480-1½ 540 (600-1½)	1480-1¾ 540 (600-1¾)	1480-2 540 (600-2)
CIRCLING	1480-1 532 (600-1)	1560-1¾ 612 (700-1¾)	1660-2¼ 712 (800-2¼)	

SE-1, 22 FEB 2024 to 21 MAR 2024

SE-1, 22 FEB 2024 to 21 MAR 2024