

APP CRS <b>008°</b>	Rwy Idg <b>4199</b>
	TDZE <b>5999</b>
	Apt Elev <b>5999</b>

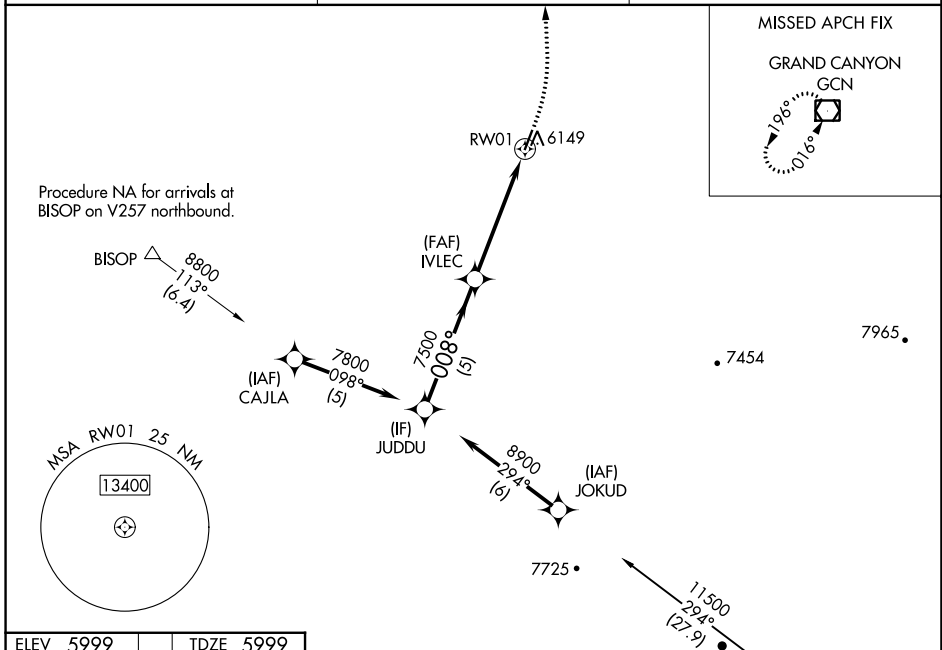
# RNAV (GPS) RWY 1

VALLE (40G)

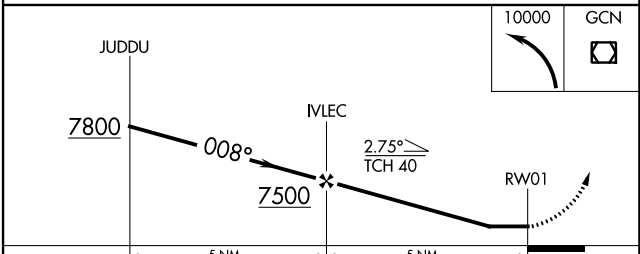
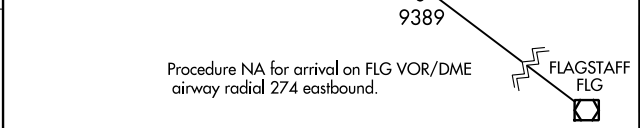
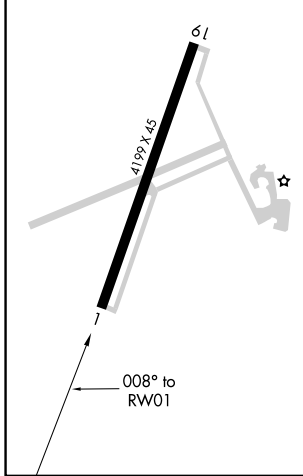
RNP APCH. Procedure NA at night. Rwy 1 helicopter visibility reduction below 1 SM NA. Use Grand Canyon Natl Park altimeter setting; when not received, procedure NA.

MISSED APPROACH: Climbing left turn to 10000 direct GCN VOR/DME and hold.

GCN ASOS <b>124.3</b>	LOS ANGELES CENTER <b>124.85 319.2</b>	UNICOM <b>122.8 (CTAF)</b>
--------------------------	---	-------------------------------



ELEV 5999	TDZE 5999
-----------	-----------



CATEGORY	A	B	C	D
LNAV MDA	6620-1	621 (700-1)	6620-1 $\frac{3}{4}$ 621 (700-1 $\frac{3}{4}$ )	NA
<input checked="" type="checkbox"/> CIRCLING	6620-1 621 (700-1)	6640-1 641 (700-1)	6640-1 $\frac{3}{4}$ 641 (700-1 $\frac{3}{4}$ )	NA

SW-4, 22 FEB 2024 to 21 MAR 2024

SW-4, 22 FEB 2024 to 21 MAR 2024