

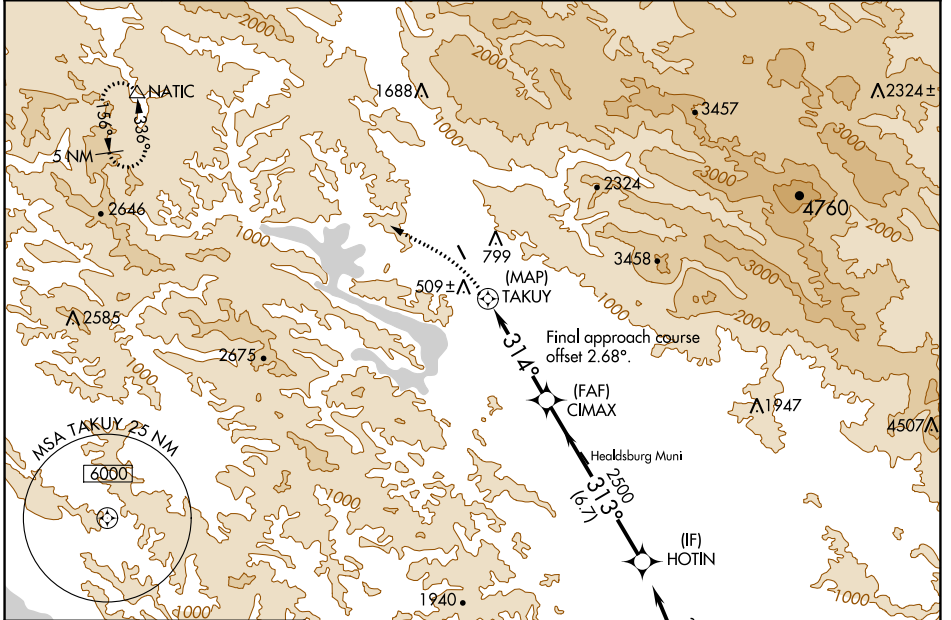
APP CRS	Rwy Idg	2909
314°	TDZE	276
	Apt Elev	276

RNAV (GPS) RWY 32

CLOVERDALE MUNI (O6#)

RNP APCH-GPS.		MISSED APPROACH: Climbing left turn to 6000 direct NATIC and hold, continue climb-in-hold to 6000.
<p>▼ Circling Cat C NA northeast of Rwy 14-32. Helicopter visibility reduction below 1 SM NA. Procedure NA at night. Use Santa Rosa altimeter setting.</p> <p>▲ NA</p>		

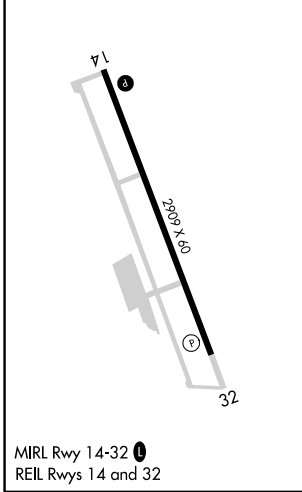
STS ASOS 120.55	OAKLAND CENTER 127.8 353.5	UNICOM 122.8 (CTAF) 0
---------------------------	--------------------------------------	---------------------------------



SW-2, 22 FEB 2024 to 21 MAR 2024

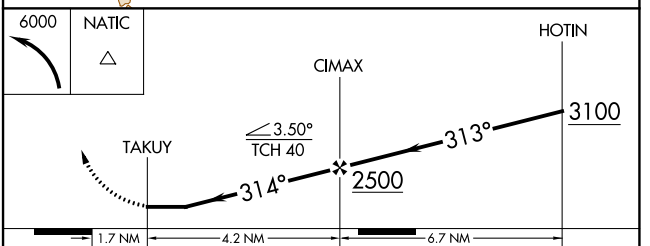
SW-2, 22 FEB 2024 to 21 MAR 2024

ELEV 276	TDZE 276
----------	----------



MIRL Rwy 14-32 0
REIL Rwy 14 and 32

Procedure NA for arrivals at ROZZA on V301 north bound, V108 northwest bound and V494 west bound.



CATEGORY	A	B	C	D
LNAV MDA	1320-2	1044 (1100-2)	1320-3 1044 (1100-3)	NA
C CIRCLING	1500-2 1224 (1300-2)	2180-2 1904 (2000-2)	2180-3 1904 (2000-3)	NA