

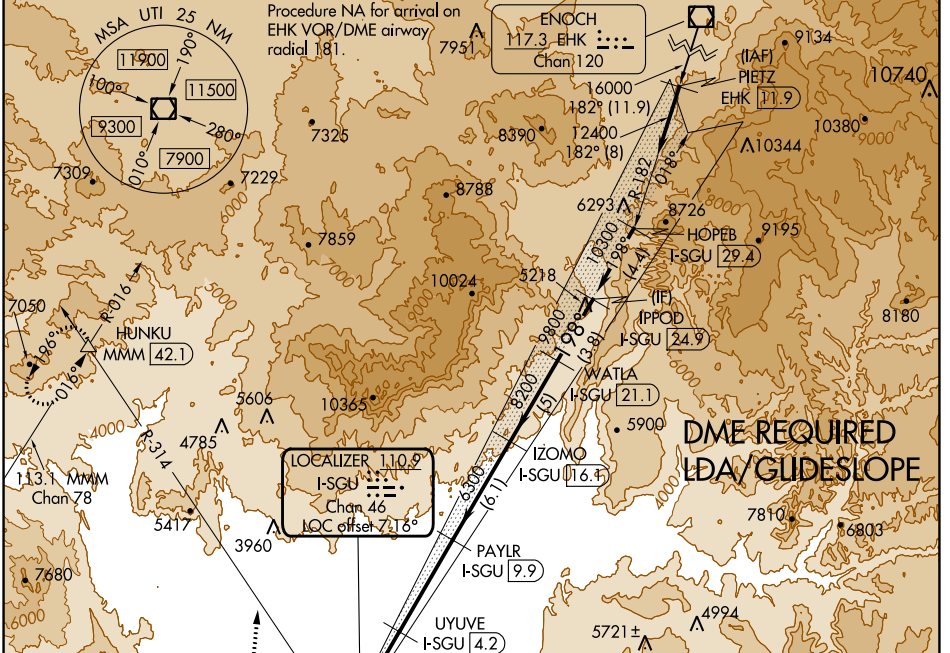
LOC/DME I-SGU 110.9 Chan 46	APP CRS 198°	Rwy Idg TDZE Apt Elev 9300 2884 2884
---	------------------------	--

LDA RWY 19

ST GEORGE RGNL (SGU)

<p>V DME required. For inop ALS, increase S-LDA/GS 19 all Cats visibility to 7/8 SM.</p> <p>NA -6°C</p>	<p>MALSR</p>	<p>MISSED APPROACH: Climb to 4200 then climbing right turn to 9800 on heading 354° and UTI VOR/DME R-314 to HUNKU INT/ MMM 42.1 DME and hold, continue climb-in-hold to 9800.</p>
---	---------------------	--

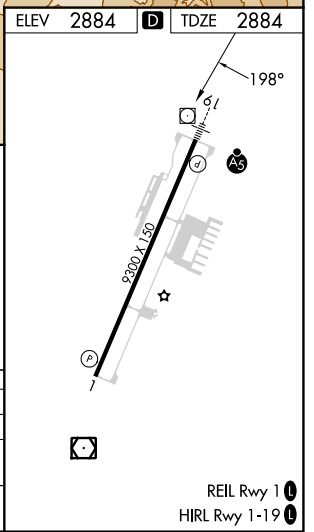
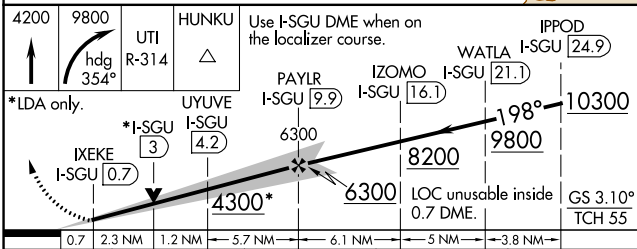
AWOS-3PT 135.075	LOS ANGELES CENTER 124.2 343.6	CLNC DEL 133.3	UNICOM 123.075 (CTAF)
----------------------------	--	--------------------------	---------------------------------



SW-4, 22 FEB 2024 to 21 MAR 2024

SW-4, 22 FEB 2024 to 21 MAR 2024

ELEV 2884	D	TDZE 2884
------------------	----------	------------------



CATEGORY	A	B	C	D
S-LDA/GS 19	3170-1/2		286 (300-1/2)	
S-LDA 19	3940-3/4 1056 (1100-3/4)	3940-1 1056 (1100-1)	3940-2 1/2	1056 (1100-2 1/2)
CIRCLING	3940-1 1/4 1056 (1100-1 1/4)	3940-1 1/2 1056 (1100-1 1/2)	3940-3 1056 (1100-3)	4660-3 1776 (1800-3)