

ALPENA CO RGNL (APN)(KAPN) P (ANG) 6 W UTC-5(-4DT) N45°04.69' W83°33.62'

LAKE HURON

H-11A, L-31C

IAP, AD

690 B Class I, ARFF Index A NOTAM FILE APN

RWY 01-19: H9001X150 (CONC-GRVD) S-95, D-115, 2S-170,

2T-560, 2D-170, 2D/2D2-468 PCN 17 R/B/Y/U HIRL

RWY 01: MALSR. PAPI(P4L)—GA 3.0° TCH 54'. Tree.

RWY 19: REIL. PAPI(P4L)—GA 3.0° TCH 39'. Tree.

RWY 07-25: H5028X100 (CONC-GRVD) S-93, D-111, 2S-170,

2T-553, 2D-170, 2D/2D2-438 PCN 4 R/B/Z/U MIRL

RWY 07: REIL. PAPI(P4L)—GA 3.0° TCH 49'. Trees.

RWY 25: REIL. PAPI(P4L)—GA 3.0° TCH 48'. Trees.

RUNWAY DECLARED DISTANCE INFORMATION

RWY 01: TORA-9001 TODA-9001 ASDA-9001 LDA-9001

RWY 07: TORA-5031 TODA-5031 ASDA-5031 LDA-5031

RWY 19: TORA-9001 TODA-9001 ASDA-9001 LDA-9001

RWY 25: TORA-5031 TODA-5031 ASDA-5031 LDA-5031

ARRESTING GEAR/SYSTEM

RWY 01 BAK-14 BAK-12A(B) (1500 FT).

BAK-14 BAK-12A(B) (1515 FT). **RWY 19**

SERVICE: S2 FUEL 100LL, JET A LGT Actvt MALSR Rwy 01; REIL Rwy

19, 07, & 25; HIRL Rwy 01-19; MIRL Rwy 07-25—CTAF.

MILITARY— JASU 3(MA-1A) 2(MD-3) 3(MA-2) 2(M32A-60) FUEL A+

+ (NC-100LL, A) FLUID SP PRESAIR LPOX LOX Avbl after hr (Mil)

C989-201-2486 pager or (Civ) C989-902-7988 pager. **OIL** Avbl after hr (Mil) C989-255-1003 cell or (Civ)

C989-902-7988 pager.

AIRPORT REMARKS: Attended 1000-0400Z†. Birds & otr wildlife on & invof arpt. For ser aft hrs call

989-464-1419/989-255-4871. Rwy 07-25 clsd to skedd acr ops gtr than 9 pax seats or unskd acr ops gtr than 30

pax seats. Twy H east of Rwy 01-19 unlgtd. Twy B not visible from twr. Twy A west of Twy C & Twy B rstrd to mil only.

Be alert for uncontrolled vehicles on the twy. Rwy 01 and Rwy 19 each have 1000 ft ovrn.

AIRPORT MANAGER: 989-354-2907

WEATHER DATA SOURCES: ASOS 120.675 (989) 356-1576.

COMMUNICATIONS: CTAF 121.35 ATIS 120.675 UNICOM 122.95

RCO 122.1R 108.8T (LANSING RADIO)

Ⓡ APP/DEP CON 128.425 (1300-2100Z†)

Ⓡ MINNEAPOLIS CENTER APP/DEP CON 125.475 (2100-1300Z†)

TOWER 121.35 (1300-2100Z† weekdays, except holidays) **GND CON** 121.9

CLEARANCE DELIVERY PHONE: For CD if una to ctc on FSS freq, ctc Minneapolis ARTCC at 651-463-5588.

AIRSPACE: CLASS D svc 1300-2100Z† Mon-Fri exc hol; other times CLASS E.

RADIO AIDS TO NAVIGATION: NOTAM FILE APN.

(L) (L) VORTAC 108.8 APN Chan 25 N45°04.97' W83°33.42' at fld. 678/7W.

TACAN AZIMUTH unusable:

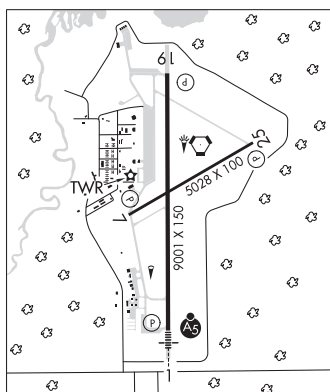
260°-280° byd 30 NM blo 4,000'

DME portion unusable:

260°-280° byd 30 NM blo 4,000'

FELPS NDB (LOMW) 206 AP N44°57.65' W83°33.60' 007° 7.0 NM to fld. 726/7W.

ILS 109.7 I-APN Rwy 01. Class IE. LOM FELPS NDB. Unmonitored when twr clsd.



ANDREWS UNIVERSITY AIRPARK (See BERRIEN SPRINGS on page 163)