

SIG FLD (See MONTEZUMA on page 65)

SIOUX CITY

SIOUX GATEWAY/BRIG GENERAL BUD DAY FLD (SUX)(KSUX) P (ANG) 6S UTC-6(-5DT) N42°24.08' OMAHA
 W96°23.07' H-5C, L-121
 1098 B ARFF Index—See Remarks NOTAM FILE SUX IAP, AD

RWY 13-31: H9002X150 (CONC-GRVD) S-100, D-120, 2S-152,
 2D-220 PCN 51 R/B/W/T HIRL

RWY 13: MALS. VASI(V4L)—GA 3.0° TCH 50'. RVR-TR Tree.

RWY 31: MALS. VASI(V4L)—GA 3.0° TCH 55'. RVR-TR

RWY 18-36: H6401X100 (ASPH-GRVD) S-65, D-80, 2D-130

PCN 31 F/D/X/T MIRL

RWY 18: REIL. PAPI(P4R)—GA 3.0° TCH 54'. Trees.

RWY 36: PAPI(P4L)—GA 3.0° TCH 54'. Pole.

LAND AND HOLD—SHORT OPERATIONS

LDG RWY	HOLD—SHORT POINT	AVBL LDG DIST
RWY 13	18-36	5400
RWY 18	13-31	4740

RUNWAY DECLARED DISTANCE INFORMATION

RWY 13: TORA-9002 TODA-9002 ASDA-9002 LDA-9002

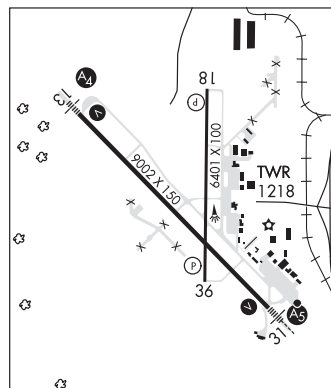
RWY 18: TORA-6400 TODA-6400 ASDA-6400 LDA-6400

RWY 31: TORA-9002 TODA-9002 ASDA-9002 LDA-9002

RWY 36: TORA-6400 TODA-6400 ASDA-6400 LDA-6400

ARRESTING GEAR/SYSTEM

RWY 13 BAK-14 BAK-12(B) (1392').



BAK-14 BAK-12(B) (1492'). **RWY 31**

SERVICE: S4 **FUEL** 100LL, JET A **OX** 1, 2, 3, 4 **LGT** Dusk-Dawn. When ATCT clsd actvt MALS Rwy 13; MALS Rwy 31; REIL Rwy 18; VASI Rwy 13 and 31; HIRL Rwy 13-31; MIRL Rwy 18-36—CTAF. **MILITARY—A-GEAR** Avbl only dur ANG opr. **JASU** 6 (AM32A-86) 6(AM32-95) **FUEL** A++(Mil) (NC-100LL, A). **FLUID** SP PRESAIR LOX LPOX LHNH **OIL**

JOAP—Avbl only dur ANG duty hr

AIRPORT REMARKS: Attended Mon-Sun 1100-0400Z. PAEW 0330-1200Z during inclement weather Nov-Apr. For fuel and support after hrs by PPR or call in. Airfield surface conditions not monitored by arpt management between 0600-1000Z daily. Class I, ARFF Index B. ARFF Index E fire fighting equipment avbl on request. Twr has limited visibility of Twy A near ARFF bldg and of Twy G. Rwy 31 is calm wind rwy. Caution: Portions of Twy A southeast of Twy B not visible by twr.

MILITARY REMARKS: RSTD All mil OPS opr 1300-2200Z Tue-Fri exc hol. **CAUTION** All mil acct opr: BASH II period (1 Oct-31 Mar); Bird waterfowl and deer haz. Ocnl birdwatch cond-sev drg spring/fall due to migratory waterfowl. Civilian twr does not broadcast USAF birdwatch cond. Ctc command post for bird sts. **ANG** Offi bus only/PPR. **COMMAND POST** (24 hr opn) DSN 585-0211 or 585-0212 or C712-233-0211/0212. PPR for use of ANG Ramp V(712)-233-0210.

Extremely limited parking. Trans acct PAX ident and baggage search unavbl. Base ops opr 1230-2230Z Tue-Fri exc hol, C712-233-0276 DSN 585-0276.

AIRPORT MANAGER: 720-365-6312

WEATHER DATA SOURCES: ASOS 119.45 (712) 293-2445. LAWRS. LLWAS.

COMMUNICATIONS: CTAF 118.7 ATIS 119.45 UNICOM 122.95

RCO 122.2 (FORT DODGE RADIO)

Ⓡ **SIOUX CITY APP/DEP CON** 124.6 (1200-0330Z)

Ⓡ **MINNEAPOLIS CENTER APP/DEP CON** 125.025 (when twr clsd)

SIOUX CITY TOWER 118.7 (1200-0330Z) **GND CON** 121.9

ANG COMD POST 138.437

CLEARANCE DELIVERY PHONE: For CD if una to ctc on FSS freq, ctc Minneapolis ARTCC at 651-463-5588.

AIRSPACE: CLASS D svc 1200-0330Z; other times CLASS E.

RADIO AIDS TO NAVIGATION: NOTAM FILE SUX.

SIOUX CITY (L) TACAN Chan 112 SUX (116.5) N42°20.67' W96°19.42' 313° 4.3 NM to fld. 1087/9E.

TOMMI NDB (MHW/LOM) 305 OI N42°27.61' W96°27.73' 133° 4.9 NM to fld. 1104/3E. NDB unmonitored when SUX ATCT clsd.

NDB unusable:

140°-155° byd 10 NM

ILS 111.3 I-OIQ Rwy 13. Class IB. LOM TOMMI NDB. LOM unmonitored. Localizer unmonitored when ATCT closed.

ILS/DME 109.3 I-SUX Chan 30 Rwy 31. Class IT. Unmonitored when ATCT closed. Glideslope autopilot cpd apchs NA blw 2,025' MSL.

SIOUX CITY N42°20.67' W96°19.42' NOTAM FILE SUX.
 (L) TACAN 116.5 SUX Chan 112 313° 4.3 NM to Sioux Gateway/Brig General Bud Day Fld. 1087/9E.
 RCO 122.2 (FORT DODGE RADIO)

OMAHA

L-121