

MOUNT HOLLY

SOUTH JERSEY RGNL (VAY)(KVAY) 4 SW UTC-5(-4DT) N39°56.57' W74°50.75'

WASHINGTON
L-34G, A
IAP

53 B TPA—853(800) NOTAM FILE VAY

RWY 08-26: H3881X50 (ASPH) S-30 MIRL

RWY 08: REIL. PAPI(P2R)—GA 3.25° TCH 45'. Tree.

RWY 26: REIL. PAPI(P2R)—GA 3.0° TCH 40'. Tree. Rgt ttc.

SERVICE: S4 **FUEL** 100LL, JET A **LGT** ACTIVATE MIRL Rwy 08-26 and REIL Rwy 08 and Rwy 26—123.3.

AIRPORT REMARKS: Attended Apr-Oct 1300-0100Z, Nov-Mar 1300-2300Z. Arpt unatndd Thanksgiving & Christmas Day. Christmas & Thanksgiving eve hrs 1300-1700Z. New Years Day hrs 1600-2300Z. Jet A fuel avbl 24 hr self svc with credit card or truck during attended hrs. Deer on and invof arpt. Helicopter tkfs and llds restricted to Rwy 08-26 only. Balls marking p-lines on apch to Rwy 08 faded. Trees along sides of rwy primarily northwest. Avoid overflying housing area WNW of arpt blo 300' when in the traffic pattern for Rwy 08. Parallel twy nstd with 18' asphalt. Rwy 08 VGSi and descent angles not coincident.

AIRPORT MANAGER: 609-267-3131

WEATHER DATA SOURCES: ASOS 119.325 (609) 267-1176.

COMMUNICATIONS: CTAF/UNICOM 122.8

Ⓜ **MC GUIRE APP/DEP CON** 126.475

CLEARANCE DELIVERY PHONE: For CD ctc Mc Guire Apch at 609-754-2767.

RADIO AIDS TO NAVIGATION: NOTAM FILE MIV.

ROBBINSVILLE (H) (H) VORTACW 113.8 RBV Chan 85 N40°12.14' W74°29.70' 236° 22.4 NM to fld. 248/10W.

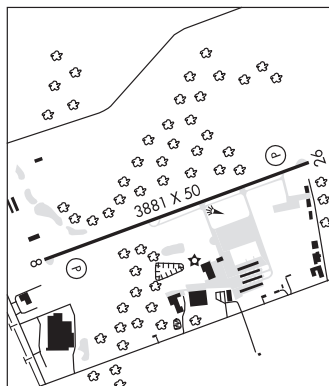
TACAN AZIMUTH unusable:

105°-115° byd 30 NM

DME unusable:

075°-115° byd 25 NM

130°-160° byd 30 NM blo 4,000'



NEWARK LIBERTY INTL (EWR)(KEWR) 3 S UTC-5(-4DT) N40°41.55' W74°10.12'

NEW YORK
COTPER
H-101, 121, L-33A, 34H
IAP, AD

17 B LRA Class I, ARFF Index E NOTAM FILE EWR

RWY 04L-22R: H11000X150 (ASPH-CONC-GRVD) D-210, 2D-520, 2D/2D2-1000 PCN 96 R/B/X/T HIRL CL

RWY 04L: MALSR. TDZL. PAPI(P4L)—GA 3.1° TCH 77'. RVR-TMR Thld dsplcd 2540'. Tree.

RWY 22R: MALSR. TDZL. REIL. PAPI(P4L)—GA 3.1° TCH 70'. RVR-TMR Thld dsplcd 1440'. Pole.

RWY 04R-22L: H10000X150 (ASPH-GRVD) D-210, 2D-520, 2D/2D2-1000 PCN 96 R/B/W/T HIRL CL

RWY 04R: ALSF2. TDZL. PAPI(P4L)—GA 2.95° TCH 71'. RVR-TMR Thld dsplcd 1190'. Pole.

RWY 22L: ALSF2. TDZL. PAPI(P4L)—GA 3.0° TCH 60'. RVR-TMR Thld dsplcd 1793'. Antenna.

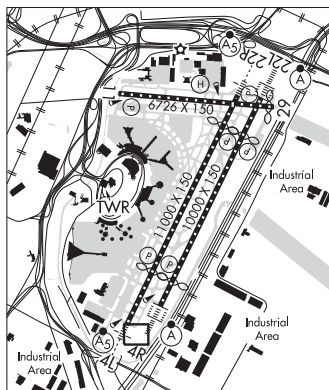
RWY 11-29: H6726X150 (ASPH-GRVD) D-210, 2D-520, 2D/2D2-1000 PCN 96 R/B/W/T HIRL CL

RWY 11: TDZL. REIL. PAPI(P4R)—GA 3.0° TCH 60'. RVR-TMR Bldg.

RWY 29: TDZL. REIL. PAPI(P4R)—GA 3.0° TCH 60'. Thld dsplcd 224'. Sign.

LAND AND HOLD-SHORT OPERATIONS

LDG RWY	HOLD-SHORT POINT	AVBL LDG DIST
RWY 04L	11-29	7750
RWY 04R	11-29	8100
RWY 11	04R-22L	5700



CONTINUED ON NEXT PAGE

CONTINUED FROM PRECEDING PAGE

RUNWAY DECLARED DISTANCE INFORMATION

RWY 04L:TORA-11000 TODA-11000 ASDA-11000 LDA-8460

RWY 04R:TORA-10000 TODA-10000 ASDA-10000 LDA-8810

RWY 11:TORA-6726 TODA-6726 ASDA-6726 LDA-6726

RWY 22L:TORA-10000 TODA-10000 ASDA-10000 LDA-8207

RWY 22R:TORA-11000 TODA-11000 ASDA-11000 LDA-9560

RWY 29:TORA-6726 TODA-6726 ASDA-6726 LDA-6502

ARRESTING GEAR/SYSTEM

RWY 11: EMAS

RWY 29: EMAS

SERVICE: S4 FUEL 100LL, JET A OX 3 LGT Rwy status lgts in opr. Rwy 29 PAPI unusbl 4⁹ left of cntrln.

NOISE: Noise restrictions call 212-435-3784 during normal business hrs.

AIRPORT REMARKS: Special Air Traffic Rules-Part 93. Attended continuously. Flocks of birds on and in/ovf airport. Para-sail and banner towing ops 1000' and blo in upper and lower New York bays including Rockaway Inlet indef. High volume of low level helicopter t/c arriving and departing Helo Kearny Heliport (65NJ) located 3.5 miles northeast of the arpt. Expect to leave and re-enter the Class B Airspace during moderate to heavy arrival periods. Rwy 04L-22R, south 1779' conc, north 1228' conc, center 7993' asph. ASDE-X in use. Operate transponders with altitude reporting mode and ADS-B (if equipped) enabled on all airport surfaces. Rwy 04R and Rwy 04L departures use upper antenna for ATC communications. When Rwy 04R/L in use, acft prkg at Trml A can exp to enter ramp via Twy A8, unless adzd by ATC. When Rwy 022L/R in use, acft prkg at Trml A can exp to enter ramp via Twy A10 or A12, unless adzd by ATC. Twy Z between Twy Z2 and Twy Z4 clsd to acft with wingspans in excess of 171'. ADG IV acft restriction from passing Twy Z3 on Twy Z. Twy Z east of Twy U acft speed restriction of 17kts/20mph max for all acft with wingspans in excess of 171'. All twys surrounding "Ballpark" parking area (Twy Y btn Twy S and Twy U, Twy S btn Twy Y and Twy K, Twy K btn Twy S and Twy B, Twy B btn Twy K and Twy U and Twy U btn Twy B and Twy Y) acft speed restriction of 17kts/20mph for all acft with wingspans in excess of 171'. Twy EE btn Rwy 04R-22L and Rwy 11-29 clsd to acft with wingspans in excess of 171'. Twy Y btn RM and Twy U, speed restriction of 17 kts (20 mph). Twy A btn Twy AA and ramp clsd to acft with wingspans in excess of 171 ft. Twy Z5 clsd to acft with wingspans in excess of 118'. Twy A11 W of Twy A acft spd rstr of 17 kts/20 mph max for all acft with wingspans in excess of 171'. Acft with wingspans in excess of 118' prohibited from turning S on Twy R from Twy B1. GA/intrnt ldg fees payable by major credit cards only. Ldg fee. Flight Notification Service (ADCUS) avbl.

AIRPORT MANAGER: 973-961-6161

WEATHER DATA SOURCES: ASOS (973) 621-2892 LLWAS. TDWR.

COMMUNICATIONS: D-ATIS ARR 115.7 D-ATIS SOUTH ARR 134.825 (973) 824-4417. UNICOM 122.95

Ⓡ NEW YORK APP/DEP CON 132.8 (241°-269°) 128.55 (090°-240°) 127.6 (270°-330°) 132.7 (331°-089°)

Ⓡ NEW YORK APP/DEP CON 119.2

TOWER 118.3 134.05 GND CON 121.8 126.15 CLNC DEL 118.85

PRE TAXI CLNC 118.85 RAMP CTL 132.45

CPDLC DCL (LOGON KUSA)

PDC

AIRSPACE: CLASS B See VFR Terminal Area Chart.

RADIO AIDS TO NAVIGATION: NOTAM FILE TEB.

TETERBORO (T) (T) VORW/DME 108.4 TEB Chan 21 N40°50.92' W74°03.73' 218° 10.6 NM to fld. 3/11W.

DME unusable:

060°-080° byd 22 NM blo 2,500'

081°-120° blo 4,000'

121°-180° blo 3,000'

236°-246°

VOR unusable:

081°-120° blo 4,000'

121°-180° blo 3,000'

236°-246°

(T) DME 113.75 EWR Chan 84(Y) N40°40.46' W74°10.68' 021° 1.2 NM to fld. 9. NOTAM FILE EWR.

ILS/DME 110.75 I-EWR Chan 44(Y) Rwy 04L. Class IID. DME shared with ILS Rwy 22R.

ILS/DME 108.7 I-EZA Chan 24 Rwy 04R. Class IIIE. DME serves Rwy 04L and Rwy 22L. DME unusable byd 15 NM.

ILS/DME 109.15 I-GPR Chan 28(Y) Rwy 11. Glideslope unusable byd 5° right and left of ctrln. LOC unusable byd 25° left of course. Autopilot cpd apch not avbl blw 350' MSL. Glideslope unusable within 0.7 NM blw 300'.

ILS/DME 108.7 I-LSQ Chan 24 Rwy 22L. Class IIIE. LOC unusable byd 20° left of course.

ILS/DME 110.75 I-JNN Chan 44(Y) Rwy 22R. Class IT. AYRON OM is also used for Rwy 22L. DME shared with ILS Rwy 04L. Localizer unusable byd 20° left of course.

COMM/NAV/WEATHER REMARKS: Durg ATC zero events; arpt ops wll mnt 118.3 and provide emerg notifications to ARFF.

HELIPAD H1: H54X54 (ASPH) PERIMETER LGTS

HELIPORT REMARKS: Helipad H1 perimeter lgts. Brewster pad; H1 located on Twy Z5. Ops limits are D65.