

STORMVILLE (N69) 1 NE UTC-5(-4DT) N41°34.62' W73°43.94'

NEW YORK
L-33B, 34I

358 NOTAM FILE ISP

RWY 06-24: H3315X50 (ASPH) S-25 0.8% up NE

RWY 06: Trees.

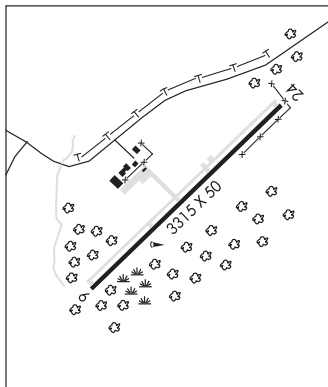
AIRPORT REMARKS: Unattended. Geese on and invof rwy. Rwy 06-24 not plowed. Flee market obstns and material may be next to rwy ends. Rwy 06-24 wide cracks and weeds on rwy.

AIRPORT MANAGER: (845) 227-4444

COMMUNICATIONS: CTAF/UNICOM 122.8

Ⓡ **NEW YORK APP/DEP CON** 132.75

CLEARANCE DELIVERY PHONE: For CD ctc New York Apch at 516-683-2448.



SUFFOLK CO N40°50.27' W72°37.91' NOTAM FILE FOK.

NEW YORK
L-33B, 34I

(T) **TACAN** 111.0 FOK Chan 47 at Francis S Gabreski. 50/13W. TACAN unmonitored when twr clsd.

No NOTAM MP: 1600-2000Z† Mon

TACAN AZIMUTH unusable:

028°-038° byd 8 NM blo 3,500'

090°-155° byd 7 NM

335°-345° byd 7 NM blo 3,500'

SULLIVAN CO INTL (See MONTICELLO on page 224)

SYRACUSE HANCOCK INTL (SYR)(KSYR) P (ANG AR) 4 NE UTC-5(-4DT) N43°06.67'

NEW YORK
H-11C, 12J, L-32F
IAP, AD

W76°06.38'

421 B LRA Class I, ARFF Index C NOTAM FILE SYR

RWY 10-28: H9014X150 (ASPH-GRVD) S-115, D-156, 2D-257

PCN 121F/B/W/T HIRL CL

RWY 10: MALSR. VASI(V4L)—GA 3.0° TCH 55'. RVR-TMR Trees.

RWY 28: ALSF2. TDZL. PAPI(P4R)—GA 3.0° TCH 60'. RVR-TMR Trees. 0.4% up.

RWY 15-33: H7500X150 (ASPH-GRVD) S-115, D-156, 2D-257

PCN 143F/B/W/T HIRL CL

RWY 15: MALSR. VASI(V4L)—GA 3.0° TCH 53'. RVR-R Trees.

RWY 33: PAPI(P4L)—GA 3.0° TCH 53'. RVR-T Tree.

RUNWAY DECLARED DISTANCE INFORMATION

RWY 10: TORA-9014 TODA-9014 ASDA-9014 LDA-9014

RWY 15: TORA-7500 TODA-7500 ASDA-7500 LDA-7500

RWY 28: TORA-9014 TODA-9014 ASDA-9014 LDA-9014

RWY 33: TORA-7500 TODA-7500 ASDA-7500 LDA-7500

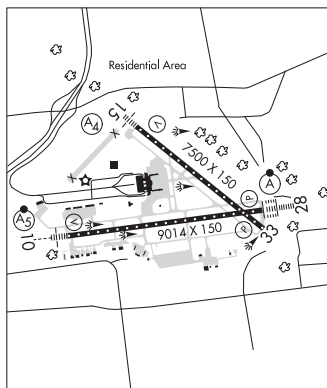
SERVICE: S4 FUEL 100LL, JET A OX 1, 2, 3, 4 **MILITARY—JASU**
2(A/M32A-86) 1(MC-1A) 2(MC-2A) 3(M32A-60A) 2(MC-11) FUEL
A+ (NC-100LL, A)

NOISE: Noise abatement procedures in effect.

AIRPORT REMARKS: Attended continuously. Deer, coyote, birds on and invof

arpt. No charter ops through passenger terminal bldg without prior permission. No jet engine maintenance runs abv idle between 0400-1100Z†. No tran acct parking on main terminal ramp. Rwy 28 touchdown RVR sensor shared by Rwy 33. Direct custom notification is required. Hrs of notification are Mon-Sat 1300-2200Z†. Arrivals outside of these hrs must make arrangements during regular work hrs, call 315-455-2271. UAS operate within the confines of the Syracuse Class C, times vary. UAS ops in Syracuse Apch/Dep airspace will be controlled by SYR ATC at all times.

AIRPORT MANAGER: 315-454-3263



CONTINUED ON NEXT PAGE

CONTINUED FROM PRECEDING PAGE

WEATHER DATA SOURCES: ASOS (315) 454-3350 WSP.

COMMUNICATIONS: ATIS 124.225 315-455-3444 UNICOM 122.95

RCO 122.4 (BUFFALO RADIO)

Ⓡ APP/DEP CON 126.125 134.275

TOWER 120.3 GND CON 121.7 CLNC DEL 125.05

AIRSPACE: CLASS C svc ctc APP CON.

RADIO AIDS TO NAVIGATION: NOTAM FILE SYR.

(VH) (H) VORTACW 117.0 SYR Chan 117 N43°09.63' W76°12.27' 135° 5.2 NM to fld. 453/11W.

TACAN AZIMUTH unusable: SyR

Byd 35 NM blo 4,000'

VOR unusable:

010°-025°

026°-066° byd 40 NM

067°-077° byd 30 NM

078°-133° byd 40 NM

134°-144° byd 19 NM

145°-216°

217°-227° byd 40 NM blo 18,000'

228°-288° byd 40 NM

289°-299° byd 40 NM blo 2,300'

289°-299° byd 47 NM

300°-351° byd 40 NM

352°-009° byd 40 NM blo 3,000'

352°-009° byd 57 NM

DME unusable:

Byd 35 NM blo 4,000'

ILS/DME 109.9 I-MRZ Chan 36 Rwy 10. Class IB. Monitored by ATCT.

ILS/DME 109.9 I-SYR Chan 36 Rwy 28. Class IIE.

TICONDEROGA MUNI (4B6) 2 NE UTC-5(-4DT) N43°52.64' W73°24.79'

NEW YORK

274 NOTAM FILE BTV

L-32G

RWY 02-20: H4041X60 (ASPH) MIRL

IAP

RWY 02: REIL. PAPI(P2L)—GA 3.0° TCH 46'. Fence.

RWY 20: REIL. PAPI(P2L)—GA 3.0° TCH 45'. Trees. Rgt tfc.

SERVICE: FUEL 100LL LGT Rwy 02 2 thld lgts OTS indef. ACTIVATE

MIRL Rwy 02-20, PAPI Rwy 02 and Rwy 20, REIL Rwy 02 and Rwy 20—CTAF.

AIRPORT REMARKS: Unattended. Winter opr Dec-Mar call for rwy conditions.

100LL self svc credit. Arpt fees-hangar, tie down, ldg for part 135, jet/turbine. Rwy 02 50' trees 1150' from rwy end 50' left. Wildlife on and invof arpt.

AIRPORT MANAGER: 518-585-6265

COMMUNICATIONS: CTAF/UNICOM 122.8

Ⓡ BOSTON CENTER APP/DEP CON 135.7

CLEARANCE DELIVERY PHONE: For CD etc Boston ARTCC at 603-879-6859.

RADIO AIDS TO NAVIGATION: NOTAM FILE BTV.

BURLINGTON (VL) (L) VORW/DME 117.5 BTW Chan 122 N44°23.83'

W73°10.96' 213° 32.7 NM to fld. 417/15W.

VOR unusable:

030°-086° byd 40 NM

075°-132° byd 30 NM blo 9,000'

087°-097° byd 40 NM blo 9,000'

087°-097° byd 49 NM

098°-169° byd 40 NM

133°-165° byd 30 NM blo 8,000'

170°-180° byd 40 NM blo 5,800'

170°-180° byd 47 NM

181°-196° byd 40 NM

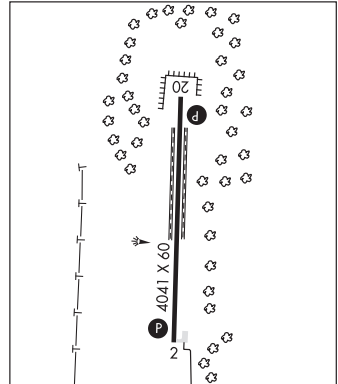
244°-292° byd 40 NM

340°-010° byd 40 NM

DME unusable:

075°-132° byd 30 NM blo 9,000'

133°-165° byd 30 NM blo 8,000'



TRI-CITIES (See ENDICOTT on page 202)