

WESTCHESTER CO (See WHITE PLAINS on page 257)

WESTHAMPTON BEACH

FRANCIS S GABRESKI (FOK)(KFOK) P (ANG) 3 N UTC-5(-4DT) N40°50.62' W72°37.91'

**NEW YORK
COPTER**

66 B LRA NOTAM FILE FOK
RWY 06-24: H9002X150 (ASPH-CONC) PCN 31 F/B/X/T HIRL
 0.3% up NE

H-101, 121, L-33B, 341
 IAP, DIAP, AD

RWY 06: REIL. PAPI(P2L)—GA 3.0° TCH 66'. Trees.
RWY 24: MALSR. PAPI(P4L)—GA 3.0° TCH 77'. Trees. Rgt tfc.
RWY 01-19: H5100X150 (ASPH-CONC) S-50, D-50, 2D-100
 PCN 17 R/B/Y/T 0.4% up N
RWY 01: Trees.
RWY 19: Trees.

RWY 15-33: H5002X150 (ASPH) PCN 42 F/B/W/T MIRL
 0.3% up NW
RWY 15: REIL. PAPI(P2L)—GA 3.0° TCH 62'. Trees.
RWY 33: REIL. VASI(V4L)—GA 3.0° TCH 57'. Trees. Rgt tfc.

SERVICE: S4 **FUEL** 100LL, JET A **OX** 3, 4 **LGT** When ATCT clsd ACTVT
 MALSR Rwy 24; REIL Rwy 06, 15, and 33; PAPI Rwy 06, 15 and 24;
 VASI Rwy 33; HIRL Rwy 06-24; MIRL Rwy
 15-33—CTAF. **MILITARY—JASU** Avbl dur ANG opr hr. (A/M32A-86)
 2(MA-1A) **FUEL** Avbl dur ANG opr hr. A++(Mil) avbl (NC-100LL, A)
FLUID SP De-Ice **LOX OIL** O-148-156(Mil) **SOAP**

NOISE: Voluntary noise abatement procs in efct; see arpt website. When safety and opns allow, Rwy 24 pref for noise abatement.

AIRPORT REMARKS: Attended 1200-0400Z†. Parachute Jumping. Birds and deer on and invof arpt. Extv glider activity. Rcmdd rsvn with FBO prior to arr. No 180° turns permitted on asph section of Rwy 06-24. Mil parachute drops on fld and offshore from Shinnecock Inlet, 8 miles ESE of fld, 2000' AGL and blo. Rwy 15-33 mil max effort ldg strip markings (3500X60) included with basic rwy markings. Rwy 06-24 6000' asph overlay in ctr of rwy. Rwy 01-19 south end rwy 900' and north end rwy 1000' are safety areas. Rwy 06-24 and Rwy 15-33 1000' safety area each end. Rwy 06 VGSI and RNAV glidepath not coincident. Rwy 24 VGSI and ILS glidepath not coincident.

MILITARY REMARKS: See FLIP AP/1 Supplementary Arpt Remarks. **CAUTION** Birds and deer haz. **PJE** vcnty of arpt. **ANG** Radio ctl acft opr 0.5 NM north of AER 15 SR-SS, ctc twr for advsy. PPR DSN 456-7362/4, C631-723-7362/4. PPR offi bus. For use of ANG ramp. Offi bus only PPR all acft, 48 hr PN, ctc afld ops DSN 456-7362, C631-723-7362 drg duty hr. Tue-Fri PPR drg off-duty hr. 106 OG/CC apvl required nml duty hr. Nml duty hr 1200-2130Z† Mon-Fri. Clsd Sat, Sun, hol and ev otr Mon. Ltd ramp space. Tran acft may be diverted to civ FBO drg non-duty hr. Non-standard markings on HH-60 apron; white painted lines denoting a roadway on the apron by the pods indicating where a vehicle must drive in order to maintain all necessary wingtip clearances. Rwy clsd to acft AUW 100,000 lb exc C130/emerg UFN. AMC/ACC acft opr rstd dur Bird Watch cond MODERATE (tkof or ldg proh wo OG/CC apvl), ctc Afld Management OPS for current Bird Watch cond. Dur Phase II BASH window (+/- 1 hr of SR/SS), not tkof or ldg perms, 106 OG/CC waiver auth. Bird haz (waterfowl) hvy dur Phase II BASH Window. Phase II nml begins 1 Aug and ends 30 Nov. **CSTMS/AG/IMG** US CSTMS clnc svc avbl with PN (FRG) 631-753-2691 (mil flts will coord thru Base Opns 631-723-7362/7364). Min 24 hr pn on rglr bus day precdng svc rqr date, max pax 15. US CSTMS hrs btn 1300 and 0300Z†.

AIRPORT MANAGER: 631-852-8095

WEATHER DATA SOURCES: ASOS 119.925 (631) 288-0588.

COMMUNICATIONS: CTAF 125.3 UNICOM 122.95

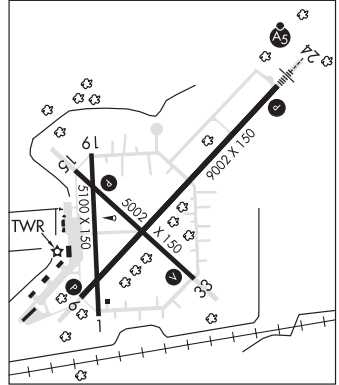
® **NEW YORK APP/DEP CON** 125.975 343.75 343.65

TOWER 125.3 236.6 (1200-0400Z†) **GND CON** 121.8 225.4

ANG OPS (RESCUE OPS) 328.475

CLEARANCE DELIVERY PHONE: For CD when ATCT clsd ctc New York Apch at 516-683-2449.

AIRSPACE: CLASS D svc 1200-0400Z†; other times CLASS G.



CONTINUED ON NEXT PAGE

CONTINUED FROM PRECEDING PAGE

RADIO AIDS TO NAVIGATION: NOTAM FILE ISP.

CALVERTON (L) (H) VOR/W/DME 114.55 CCC Chan 92(Y) N40°55.78' W72°47.93' 137° 9.2 NM to fld. 85/13W.

VOR unusable:

055°-075°

233°-268° byd 25 NM

269°-290°

DME unusable:

056°-066° byd 39 NM

SUFFOLK CO (T) TACAN Chan 47 FOK (111.0) N40°50.27' W72°37.91' at fld. 50/13W. NOTAM FILE FOK.

TACAN unmonitored when twr clsd.

No NOTAM MP: 1600-2000Z† Mon

TACAN AZIMUTH unusable:

028°-038° byd 8 NM blo 3,500'

090°-155° byd 7 NM

335°-345° byd 7 NM blo 3,500'

ILS/DME 111.7 I-FOK Chan 54 Rwy 24. Class IT. Unmonitored when ATCT clsd.

WHEELER-SACK AAF (GTB)(KGTB) A 1 NE UTC-5(-4DT) N44°03.34' W75°43.19'

690 B TPA—See Remarks NOTAM FILE GTB Not insp.

RWY 03-21: H10000X150 (CONC) PCN 59 R/B/W/T HIRL

RWY 03: ALSF1. PAPI(P4L)—GA 3.0° TCH 64'. RVR-TR Thld dsplcd 1363'.

RWY 21: ALSF1. PAPI(P4L)—GA 3.0° TCH 72'. RVR-TR Rgt ttc.

RWY 15-33: H5002X144 (CONC) PCN 43 R/C/W/T HIRL

RWY 15: MALSR. RVR-TR Rgt ttc.

RWY 08-26: H4501X150 (ASPH-CONC) PCN 34 F/A/W/T LIRL

RWY 08: Rgt ttc.

SERVICE: MILITARY—FUEL Service-L-AOE JASU-3(ASU600-270-DDP). Fuel A++ (mil); Avbl 1400-0300Z† Mon-Fri, Exc hol, OT PN. **FLUID** SP De-ice Type I and Type IV avbl with 3 hr PN. **TRAN ALERT:** Opr 1400-1300Z† Mon-Fri; clsd Sat, Sun and Federal Hol ltd; no cathering, lav, trash removal, water, or crew trnsp svc avbl.

NOISE: Noise abatement Quiet hrs 0300-1100Z†.

MILITARY REMARKS: Attended 1200-0300Z† Mon-Fri, clsd otr times PPR. Arpt clsd hols. See FLIP AP/1 Supplementary Arpt Information. Base Ops opr 1200-0400Z† Mon-Fri; clsd Sat, Sun and Federal Hol. All tran acft inbd for prk ctc Base Ops 20 min prior to ldg, mil aircrews must register with Base Ops if RON. Tran R/W prk south end of north ramp. Twy G, N, P, R and Twy B east of Twy B designated nonmovement area. Acft inbd for Avn Flt Maint Act (AFMA) must arr no later 1900Z† ctc DSN 772-7536, C315-772-7536. Emerg ctc Mt Ops Cntr DSN 772-8620 C315-772-8620. **RSTD** PPR ctc Base Ops DSN 772-5681, C315-772-5681/5682. Tenant acft have priority for lcl pat ops, tran may be ltd. Rwy 15-33. Twy G rstd to C130 or smaller. Sod ldg/ops rstd to cntr, sod. Oasis rsto to tenant R/W hot refuel ops, ldg/dep prohibited when clsd. Oasis 4R-22L clsd N of point 4, dep 04R ldg, 22L prohibited. Twy B btn Twy A and N ramp clsd. **CAUTION** Extsy mil acft activity vcnty arpt mil acft refer to FLIP AP/1 prior to ops on Fort Drum or wi R5201. Narrow Twy A, B, int arc 40' wide. N Ramp edge lgt us. Twy B edge lgt us btn Twy A and Sabre helipad. W Ramp unlgt. Oasis 22/04 Thld/end lgt us. Rsc not mntn when base ops is clsd. Wildlife haz, refer to AP/1. **TFC PAT** TPA—Rotary wing 1400(710), fixed wing 2000(1310), turbojet 2500(1810), overhead 3000(2310). **CSTMS/AG/IMG** 24 hr PN, consult FCG. Aerial port msn acft plan arr btn 1300-0300Z† Mon-Fri exc hol, OT rqr advanced coord and apvl. **MISC** Wx svc avbl 24/7. DSN 772-6065, C315-772-6065. Back-up wx brief avbl fr 15 OWS Scott AFB DSN 576-9755/9702, C618-256-9755/9702. Pri wx sensors automated H24. Drg augmentation/back-up wx observation pt is obst 033°-162°. PMSV freq not monitored Sat, Sun and federal hol. ATC will assist in cooperative watch by notifying wx of unprtd cond. Rwy 09-8-26 cntr 75' conc btn Rwy 03 and Twy D, PCN 54, remainder asph.

COMMUNICATIONS: ATIS 119.525

Ⓡ **APP/DEP CON** 124.875 257.6

TOWER 118.75 290.25 **GND CON** 121.9 229.8 **CLNC DEL** 121.9 **PMSV SACK METRO** 304.3

BASE OPS 126.2 280.8 **FORT DRUM FLT FLW** 141.025 397.75

AIRSPACE: CLASS D.

RADIO AIDS TO NAVIGATION: NOTAM FILE ART.

WATERTOWN (L) (L) VORTAC 109.8 ART Chan 35 N43°57.13' W76°03.88' 079° 16.2 NM to fld. 374/12W.

VOR unusable:

090°-111° byd 15 NM

112°-150°

151°-175° byd 20 NM

ILS/DME 108.5 I-AEZ Chan 22 Rwy 03.

ILS/DME 108.5 I-GTB Chan 22 Rwy 21. Class IE.

ASR/PAR

COMM/NAV/WEATHER REMARKS: Radar see Terminal FLIP for Radar Minima. 128.875 and 257.8 in all apch plates/mins.