

HARLINGEN

VALLEY INTL (HRL)(KHRL) 3 NE UTC-6(-5DT) N26°13.63' W97°39.31'

BROWNSVILLE
H-7C, L-20H, 21A
IAP, AD

36 B Class I, ARFF Index B NOTAM FILE HRL

RWY 17R-35L: H8301X150 (ASPH-GRVD) S-160, D-200, 2S-175,
2T-561, 2D-350, 2D/D1-593, 2D/2D2-700, C5-840 HIRL

RWY 17R: MALSR. Rgt tfc.

RWY 35L: PAPI(P4R)—GA 3.0° TCH 59'.

RWY 13-31: H7257X150 (ASPH-GRVD) S-160, D-200, 2S-175,
2D-350, 2D/2D2-700 HIRL

RWY 13: REIL. PAPI(P4L)—GA 3.0° TCH 59'.

RWY 31: MALSR. PAPI(P4L)—GA 3.0° TCH 55'.

RWY 17L-35R: H5949X150 (ASPH) S-160, D-200, 2D-350 MIRL

RWY 17L: REIL.

RWY 35R: Thld dspclcd 190'. Rgt tfc.

RUNWAY DECLARED DISTANCE INFORMATION

RWY 13: TORA-7257 TODA-7257 ASDA-7257 LDA-7257

RWY 17L: TORA-5949 TODA-5949 ASDA-5949 LDA-5949

RWY 17R: TORA-8301 TODA-8301 ASDA-8301 LDA-8301

RWY 31: TORA-7257 TODA-7257 ASDA-7257 LDA-7257

RWY 35L: TORA-8301 TODA-8301 ASDA-8301 LDA-8301

RWY 35R: TORA-5949 TODA-5949 ASDA-5949 LDA-5759

SERVICE: S4 FUEL 100LL, JET A OX 3 LGT When ATCT CLSD ACTVT

MALSR Rwy 17R and Rwy 31—CTAF.

AIRPORT REMARKS: Attended 1200-0600Z†. Migratory birds on and in vicinity of arpt. When ATCT clsd req ARFF thru Corpus Approach or flt svc. User fee arpt.

AIRPORT MANAGER: 956-430-8605

WEATHER DATA SOURCES: ASOS 124.85 (956) 428-7297. LAWRS.

COMMUNICATIONS: CTAF 119.3 ATIS 124.85 UNICOM 122.95

HARLINGEN RCO 122.2 (SAN ANGELO RADIO)

Ⓡ VALLEY APP/DEP CON 120.7

HARLINGEN TOWER 119.3 (1200-0600Z†) GND CON 121.7

CLEARANCE DELIVERY PHONE: For CD when ATCT is clsd ctc crp Apch at 361-299-4230.

AIRSPACE: CLASS C svc ctc APP CON svc 1200-0600Z† other times CLASS E.

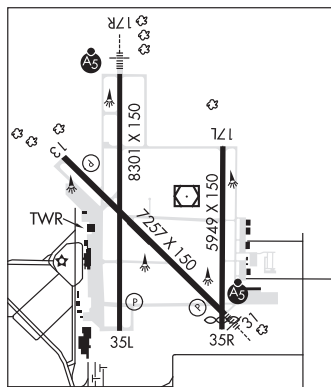
RADIO AIDS TO NAVIGATION: NOTAM FILE HRL.

HARLINGEN (L) (L) VORW/DME 113.65 HRL Chan 83(Y) N26°13.75' W97°39.14' at fld. 32/5E.

SEBAS NDB (LOMW) 338 HR N26°18.31' W97°39.45' 173° 4.7 NM to fld. 28/5E.

ILS/DME 111.5 I-HRL Chan 52 Rwy 17R. Class IB. LOM SEBAS NDB. Unmonitored when ATCT closed. Localizer backcourse unusable 1 NM inbound. Localizer backcourse unusable byd 15° left and right of course.

COMM/NAV/WEATHER REMARKS: Emergency frequency 121.5 not available at tower.



HARRISON CO (See MARSHALL on page 372)

HARRISON FLD OF KNOX CITY (See KNOX CITY on page 353)