

**ORLANDO SANFORD INTL** (SFB)(KSFB) 16 NE UTC-5(-4DT) N28°46.63' W81°14.09'

**JACKSONVILLE**  
H-8H, L-21D, 24F  
IAP, AD

55 B LRA ARFF Index—See Remarks NOTAM FILE SFB  
**RWY 09L-27R:** H11002X150 (ASPH-GRVD) S-100, D-279, 2D-840  
 PCN 67 F/B/X/T HIRL  
**RWY 09L:** MALSR. PAPI(P4L)—GA 3.0° TCH 71'. Thld dsplcd 1000'.  
 Trees.  
**RWY 27R:** MALSR. PAPI(P4R)—GA 3.0° TCH 72'. Rgt tfc. 0.4% up.  
**RWY 18-36:** H6002X150 (ASPH-CONC-GRVD) S-111, D-183,  
 2D-599 PCN 23 F/C/X/T MIRL  
**RWY 18:** REIL. PAPI(P4L)—GA 3.0° TCH 48'. Trees.  
**RWY 36:** REIL. PAPI(P4L)—GA 3.0° TCH 45'. Trees. Rgt tfc.  
**RWY 09R-27L:** H5839X75 (ASPH) S-67, D-80 PCN 10 F/C/X/T  
 HIRL 0.4% up W  
**RWY 09R:** MALSR. PAPI(P4L)—GA 3.0° TCH 44'. Thld dsplcd 839'.  
 Trees. Rgt tfc.  
**RWY 27L:** REIL. PAPI(P4L)—GA 3.0° TCH 47'. Trees.  
**RWY 09C-27C:** H3578X75 (ASPH) S-12 PCN 69 F/A/X/T MIRL  
**RWY 09C:** REIL. PAPI(P2L)—GA 4.0° TCH 35'. Trees. Rgt tfc.  
**RWY 27C:** PAPI(P2L)—GA 3.0° TCH 27'. Trees.

**LAND AND HOLD—SHORT OPERATIONS**

LDG RWY	HOLD—SHORT POINT	AVBL LDG DIST
RWY 09C	18-36	3150
RWY 09L	18-36	5500
RWY 18	09R-27L	4600
RWY 27R	18-36	3952
RWY 36	09L-27R	5170

**RUNWAY DECLARED DISTANCE INFORMATION**

<b>RWY 09C:</b> TORA-3578 TODA-3578 ASDA-3578 LDA-3578
<b>RWY 09L:</b> TORA-11002 TODA-11002 ASDA-11002 LDA-10002
<b>RWY 09R:</b> TORA-5839 TODA-5839 ASDA-5839 LDA-5000
<b>RWY 18:</b> TORA-6002 TODA-6002 ASDA-5956 LDA-5956
<b>RWY 27C:</b> TORA-3578 TODA-3578 ASDA-3578 LDA-3578
<b>RWY 27L:</b> TORA-5839 TODA-5839 ASDA-5839 LDA-5839
<b>RWY 27R:</b> TORA-11002 TODA-11002 ASDA-11002 LDA-11002
<b>RWY 36:</b> TORA-6002 TODA-6002 ASDA-6002 LDA-6002

**SERVICE:** S4 **FUEL** 100LL, JET A **OX3** **LGT** When ATCT clsd actvt MALSR Rwy 09R and Rwy 27R; PAPI Rwsy 09L, 27R, 09C, 27C, 09R, 27L, 18, and 36; HIRL Rwy 09L-27R and Rwy 09R-27L; MIRL Rwy 18-36 and Rwy 09C-27C—CTAF.

**NOISE:** For tkof bjts use FAA NADP-2 comparable acr ops specs profile or NBAA profile. On visual apchs pilots are requested to dla ldg grar extn til oprly nec.

**AIRPORT REMARKS:** Attended continuously. Large and/or flocking birds; including eagles invof arpt. Flt trng act in tfc pat and lcl area. K1 clsd to all acft perm. Clsd to repetitive acr trng ops excp 24 hr PPR—amgr 407-585-4000 ext 4006 or 407-585-4119. Class I, ARFF Index D. ARFF Index E avbl with 24 hr PPR (charter carriers on published sked exempt). Twy Twy K clsd to acft with wingspan grtr than 79'. Twy P clsd to acft with wingspan greater than 40'. Rwy 18-36 cntr 75' good cond; outer edge fair cond. All acft arr with less than 30 seats to clear customs ctc 129.075 prior to Indg. Rwy 09C-27C not avbl for sked acr opns with more than 9 psgr seats or unsked acr at least 31 psgr seats. Rwy 18-36 prim acr ops rwy. Rwy 09L-27R prim acr ops rwy. Rwy 09R-27L pri flt T rwy. Rwy 09R-27L not avbl for sked acr opns with more than 9 pax seats or unsked acr at least 31 pax seats. PAEW on trml ramp wi 75' of Twy C cntrin when acft using gates 7 or 8. Due to facility constraints that limit ability to accommodate diverted flights acft operators to ctc the arpt at 407-585-4101 for prior coordination, except in case of a declared in-flight emergency. NOTE: See Special Notices—Terminal Area Graphic Notice.

**AIRPORT MANAGER:** 407-585-4015

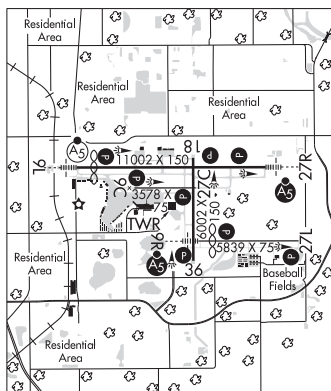
**WEATHER DATA SOURCES:** ASOS 125.975 (407) 321-9384. LAWRS.

**COMMUNICATIONS:** CTAF 120.3 ATIS 125.975

Ⓡ **ORLANDO APP/DEP CON** 119.775 (South) 135.3 (North)

**CLNC DEL** 123.975 **CLNC DEL** 121.35 (When twr clsd)

**TOWER** 120.3 135.25 (1130-0400z) **GND CON** 121.35



CONTINUED ON NEXT PAGE

## CONTINUED FROM PRECEDING PAGE

AIRSPACE: CLASS C svc ctc APP CON svc 1130-0400Z±; other times CLASS G.

RADIO AIDS TO NAVIGATION: NOTAM FILE ORL.

(VH) (H) VORTACW 112.2 ORL Chan 59 N28°32.56' W81°20.10' 021° 15.0 NM to fld. 102/OE.

TACAN AZIMUTH unusable:

066°-084°

246°-289° byd 17 NM blo 2,000'

246°-289° byd 28 NM blo 2,500'

VOR unusable:

075°-089° byd 40 NM blo 8,000'

075°-089° byd 53 NM

090°-100° byd 40 NM

235°-245° byd 40 NM

260°-296° byd 40 NM blo 2,000'

260°-296° byd 46 NM blo 5,000'

260°-296° byd 57 NM

300°-314° byd 40 NM blo 4,000'

300°-314° byd 55 NM blo 6,000'

300°-314° byd 66 NM

320°-330° byd 40 NM

340°-345° byd 40 NM

ILS/DME 108.9 I-SND Chan 26 Rwy 09L. Class ID. Unmonitored when ATCT clsd.

ILS/DME 111.55 I-OOS Chan 52(Y) Rwy 09R. Class ID. Unmonitored when ATCT clsd.

ILS/DME 110.15 I-FNU Chan 38(Y) Rwy 27R. Class IE. Unmonitored when ATCT clsd.

COMM/NAV/WEATHER REMARKS: 123.975 Cinc Del avbl when advertised on ATIS.

---

**ORLANDO APOPKA** (See APOPKA on page 84)

---