

**CARLSBAD**

**MC CLELLAN-PALOMAR** (CRQ)(KCRQ) 3 SE UTC-8(-7DT) N33°07.70' W117°16.81'

LOS ANGELES

331 B TPA—See Remarks Class I, ARFF Index A NOTAM FILE CRQ MON Airport

L-4H

**RWY 06-24:** H4897X150 (ASP-GRVD) S-60, D-80, 2S-102, 2D-110

IAP, AD

PCN 33 F/D/X/T HIRL

**RWY 06:** PAPI(P4L)—GA 3.0° TCH 35'. RVR-R Thld dsplcd 297'.

**RWY 24:** MALSR. REIL. PAPI(P4L)—GA 3.2° TCH 54'. RVR-T Rgt tfc.

**RUNWAY DECLARED DISTANCE INFORMATION**

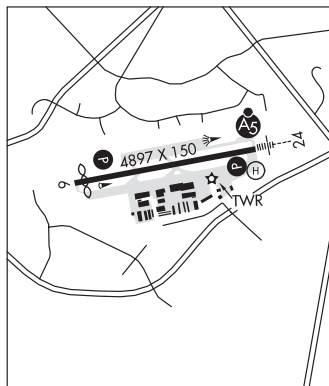
**RWY 06:** TORA-4897 TODA-4897 ASDA-4897 LDA-4600

**RWY 24:** TORA-4897 TODA-4897 ASDA-4897 LDA-4897

**SERVICE:** S4 FUEL 100LL, JET A OX 3, 4 LGT When twr clsd ACTIVATE HIRL Rwy 06-24, PAPI Rwy 06 and Rwy 24, REIL Rwy 24, MALSR Rwy 24—CTAF.

**NOISE:** No jet acft training due to noise abatement and traffic congestion. Multiple apchs by large acft (including large helicopters) not authorized. All acft multiple practice apch and ldgs discourage 0600-1500Z†. Voluntary curfew, jets 0600-1500Z†, props 0800-1400Z†, emerg, lifeguard and law enforcement excepted. Arpt has noise abatement procedures ctc arpt manager 760-431-4646.

**AIRPORT REMARKS:** Attended 1500-0600Z†. Rwy 24 hard to see 2 hrs prior to SS; do not mistake Twy A as the rwy. Extensive bird activity in vicinity especially in spring. P-lines 2 miles W & SW. Rwy 24 is calm wind rwy. CLOSED to air carrier ops with more than 9 passenger seats from 0630Z† to 1400Z† except by PPR call arpt manager 760-431-4646. PPR for all military acft call arpt manager 760-431-4646. TPA-1003(672) helicopters, 1503(1172) small acft, 2003(1672) large acft. Rwy 06-24 south VFR tfc pattern clsd 0600-1500Z†. Request jets fly the ILS apch. North side ramp limited to 12,500 lbs. Tnst prkg ltd to sml smgl and twin eng acft with wingspans under 38 ft. No jet acft prkg allowed in tnt prkg. Limited transient tie down space on public ramp. U.S. Customs User Fee Arpt, ctc 877-848-7766. Ldg fee. Use caution reg thermal plumes invof power plant approximately 2.7 NM West and Northwest of arpt.



**AIRPORT MANAGER:** 760-431-4646

**WEATHER DATA SOURCES:** ASOS (760) 930-0864 LAWRS.

**COMMUNICATIONS:** CTAF 118.6 ATIS 120.15 (760-438-2117)

**OCEANSIDE RCO** 122.1R 115.3T (SAN DIEGO RADIO)

Ⓡ **SOCAL APP/DEP CON** 127.3

**TOWER** 118.6 (1500-0600Z†) **GND CON** 121.8

**CLNC DEL** 134.85

**CLEARANCE DELIVERY PHONE:** For CD when ATCT clsd ctc SoCal Apch at 800-448-3724.

**AIRSPACE:** CLASS D svc 1500-0600Z†; other times CLASS G.

**RADIO AIDS TO NAVIGATION:** NOTAM FILE CRQ.

**OCEANSIDE (VH) (H) VORTAC** 115.3 OCN Chan 100 N33°14.44' W117°25.06' 119° 9.7 NM to fld. 52/15E.

VOR unusable:

028°-036° byd 40 NM

039°-048° byd 40 NM

049°-059° byd 40 NM blo 13,000'

049°-059° byd 58 NM

060°-099° byd 40 NM

100°-114° byd 40 NM blo 7,000'

100°-114° byd 61 NM

216°-226° byd 40 NM

227°-265° byd 20 NM

305°-320° byd 40 NM

330°-335° byd 40 NM

337°-017° byd 40 NM

**ILS/DME** 108.7 I-CRQ Chan 24 Rwy 24. Unmonitored when ATCT clsd. Autopilot coupled approaches NA below 960' MSL.

**COMM/NAV/WEATHER REMARKS:** When twr clsd acft must self-announce on CTAF prior to ldg or tkof.

**HELIPAD H1:** H40X50 (CONC) HIRL

**HELIPORT REMARKS:** Standard heliport markings.

**CASTLE** (See ATWATER on page 111)

**CATALINA** (See AVALON on page 112)