

MARKLEEVILLE

ALPINE CO (M45) 3 N UTC-8(-7DT) N38°44.09' W119°46.02'

SAN FRANCISCO

5872 TPA-6672(800) NOTAM FILE RNO

L-9A

RWY 17-35: H4443X50 (ASPH) 1.0% up S

RWY 17: Hill.

RWY 35: Rgt tfc.

AIRPORT REMARKS: Unattended. No snow removal, arpt CLOSED when snow on rwy. Soil conditions off rwy is poor in wet conditions. Call public works for additional information 530-694-2140 extension 0. Large stones along edge of rwy off graded surface. Rwy 17-35 ltd by arpt opr to 4,800 lbs single wheel, 9,600 lbs dual wheel. Rwy 17-35 cracked asph with loose grvl on rwy.

AIRPORT MANAGER: 530-694-2140

COMMUNICATIONS: CTAF 122.9

CLEARANCE DELIVERY PHONE: For CD ctc Oakland ARTCC at 510-745-3380.

RADIO AIDS TO NAVIGATION: NOTAM FILE RNO.

MUSTANG (VH) (H) VORTACW 117.9 FMG Chan 126 N39°31.88' W119°39.36' 170° 48.0 NM to fld. 5950/16E.

VOR unusable:

002°-012° byd 40 NM blo 19,000'

013°-022° byd 40 NM blo 10,300'

013°-022° byd 53 NM

023°-045° byd 40 NM

079°-113° byd 40 NM

114°-124° byd 40 NM blo 10,000'

114°-124° byd 52 NM

125°-145° byd 40 NM

153°-172° byd 40 NM blo 15,000'

153°-172° byd 52 NM blo 18,000'

173°-186° byd 40 NM

187°-197° byd 40 NM blo 15,000'

187°-197° byd 66 NM

198°-212° byd 40 NM

200°-230° byd 30 NM blo 13,000'

213°-223° byd 40 NM blo 18,000'

224°-304° byd 40 NM

327°-339° byd 40 NM blo 18,000'

356°-001° byd 40 NM

TACAN AZIMUTH unusable:

200°-230° byd 30 NM blo 13,000'

DME unusable:

200°-230° byd 30 NM blo 13,000'

MARYSVILLE

YUBA CO (MYV)(KMYV) 3 SE UTC-8(-7DT) N39°05.87' W121°34.19'

SAN FRANCISCO

64 B NOTAM FILE MYV

H-3B, L-2G, 3A

RWY 14-32: H6007X150 (ASPH) S-75, D-100, 2S-127, 2D-150

IAP, AD

HIRL

RWY 14: MALSR. VASI(V4L)—GA 3.0° TCH 50'. Tree.

RWY 32: VASI(V4L)—GA 3.0° TCH 32'. Pole.

RWY 05-23: H3314X60 (ASPH) S-42, D-60, 2D-95

RWY 05: Railroad.

RWY 23: Tree.

SERVICE: S3 FUEL 100LL, JET A LGT ACTIVATE MALSR Rwy 14, VASI

Rwy 14 and Rwy 32, HIRL Rwy 14-32—CTAF.

AIRPORT REMARKS: Attended 1400-0200Z±. Migratory flocks of waterfowl in/ovf arpt during the spring and fall of the year. Rwy 23 +35' p-lines 900'-1050' from rwy end running 145' left to 210' rgt. All acft enter tfc pattern at 1000' AGL except turbine-powered or large airplanes at 1500' AGL. Rwy 05-23 asph sfc is in poor cond with raveling and spalling asph, and longl and lateral cracking. Rwy 05 and Rwy 23 mrkgs are faded.

AIRPORT MANAGER: 530-741-6463

WEATHER DATA SOURCES: ASOS 118.475 (530) 742-0695.

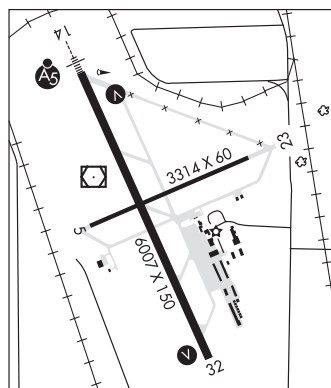
COMMUNICATIONS: CTAF/UNICOM 123.05

RCO 122.1R 122.6 110.8T (RANCHO MURIETA RADIO)

Ⓡ NORCAL APP/DEP CON 125.4

CLEARANCE DELIVERY PHONE: For CD ctc NorCal Apch at 916-361-6874.

AIRSPACE: CLASS E.



CONTINUED ON NEXT PAGE

SW, 21 MAR 2024 to 16 MAY 2024

CONTINUED FROM PRECEDING PAGE

RADIO AIDS TO NAVIGATION: NOTAM FILE MYV.

MARYSVILLE (T) (T) VOR/DME 110.8 MYV Chan 45 N39°05.92' W121°34.38' at fld. 62/16E.

ILS 110.5 I-MYV Rwy 14. Class IT. Unmonitored. Autopilot coupled apchs NA blw 695' (1.66 NM fm thld).

MC CLELLAN AIRFIELD (See SACRAMENTO on page 253)

MC CLELLAN-PALOMAR (See CARLSBAD on page 129)

MEADOWS FLD (See BAKERSFIELD on page 114)

MEFFORD FLD (See TULARE on page 295)

MENDOCINO N39°03.19' W123°16.46' NOTAM FILE UKI.

SAN FRANCISCO

(VH) (H) VORTACW 112.3 ENI Chan 70 022° 5.5 NM to Ukiah Muni. 2985/16E.

H-3A, L-2G

MENDOTA

WILLIAM ROBERT JOHNSTON MUNI (M9Ø) O E UTC-8(-7DT) N36°45.52' W120°22.28'

SAN FRANCISCO

162 NOTAM FILE RIU

L-3C

RWY 15-33: H3499X50 (ASPH) S-12.5

RWY 33: Thld dsplcd 777'. Bldg. Rgt tfc.

AIRPORT REMARKS: Unattended. Arpt CLOSED indefinitely. Arpt clsd until further notice. Rwy 15-33 is potholed with areas of collapsed pavement. Rwy 15 and Rwy 33 markings faded. Parallel twy rough/uneven sfc; extsv asph rpr and patching.

AIRPORT MANAGER: (559) 655-4298

COMMUNICATIONS: CTAF 122.9

CLEARANCE DELIVERY PHONE: For CD ctc NorCal Apch at 916-361-0516.

RADIO AIDS TO NAVIGATION: NOTAM FILE RIU.

PANOCHÉ (VL) (L) VORTACW 112.6 PXN Chan 73 N36°42.93' W120°46.72' 066° 19.8 NM to fld. 2060/16E.

VOR unusable:

010°-024° byd 40 NM blo 4,000'

010°-024° byd 50 NM

025°-040° byd 40 NM

041°-051° byd 40 NM blo 7,000'

041°-051° byd 49 NM

052°-074° byd 40 NM

075°-087° byd 40 NM blo 5,000'

075°-087° byd 76 NM

088°-110° byd 40 NM

111°-129° byd 40 NM blo 18,000'

130°-172° byd 40 NM

173°-183° byd 40 NM blo 18,000'

184°-222° byd 40 NM

223°-233° byd 35 NM blo 20,000'

230°-280° byd 7 NM blo 9,000'

234°-268° byd 40 NM

269°-282° byd 40 NM blo 18,000'

283°-293° byd 40 NM blo 8,000'

283°-293° byd 51 NM

294°-306° byd 40 NM blo 6,500'

294°-306° byd 78 NM

307°-322° byd 40 NM

323°-333° byd 40 NM blo 5,000'

323°-333° byd 54 NM

334°-358° byd 40 NM

359°-009° byd 40 NM blo 7,500'

359°-009° byd 47 NM