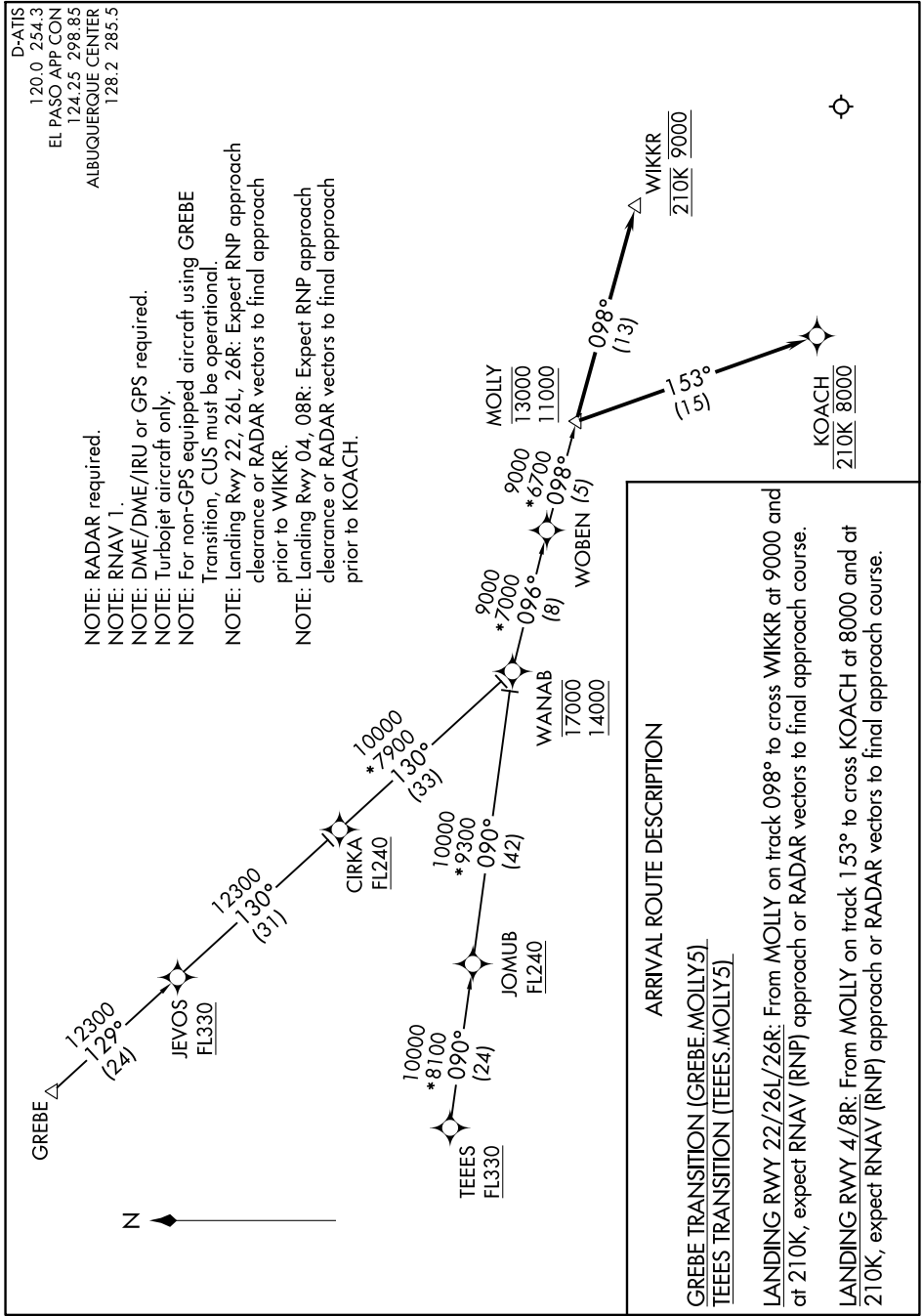


**(MOLLY.MOLLY5) 20310**  
**MOLLY FIVE ARRIVAL (RNAV)**

AL-134 (FAA)

EL PASO INTL (ELP)  
 EL PASO, TEXAS

SC-3, 21 MAR 2024 to 18 APR 2024



- NOTE: RADAR required.  
 NOTE: RNAV 1.  
 NOTE: DME/DME/IRU or GPS required.  
 NOTE: Turbojet aircraft only.  
 NOTE: For non-GPS equipped aircraft using GREBE Transition, CUS must be operational.  
 NOTE: Landing Rwy 22, 26L, 26R: Expect RNP approach clearance or RADAR vectors to final approach prior to WIKKR.  
 NOTE: Landing Rwy 04, 08R: Expect RNP approach clearance or RADAR vectors to final approach prior to KOACH.

**ARRIVAL ROUTE DESCRIPTION**

GREBE TRANSITION [(GREBE.MOLLY5)]  
TEEES TRANSITION [(TEES.MOLLY5)]

**LANDING RWY 22/26L/26R:** From MOLLY on track 098° to cross WIKKR at 9000 and at 210K, expect RNAV (RNP) approach or RADAR vectors to final approach course.

**LANDING RWY 4/8R:** From MOLLY on track 153° to cross KOACH at 8000 and at 210K, expect RNAV (RNP) approach or RADAR vectors to final approach course.

**MOLLY FIVE ARRIVAL (RNAV)**  
**(MOLLY.MOLLY5) 05NOV20**

EL PASO, TEXAS  
 EL PASO INTL (ELP)

SC-3, 21 MAR 2024 to 18 APR 2024