

LOC/DME I-MRY 110.7 Chan 44	APP CRS 098°	Rwy ldg 7000 TDZE 198 Apt Elev 257
-------------------------------------------------	------------------------	---------------------------------------------------------------

ILS or LOC RWY 10R

MONTEREY RGNL (MRY)

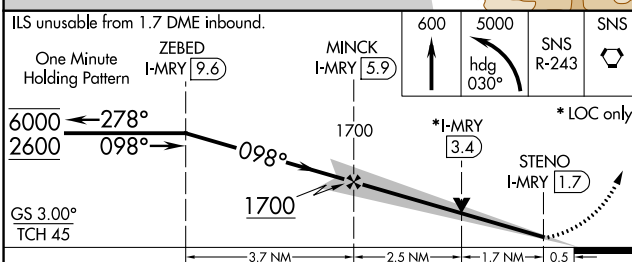
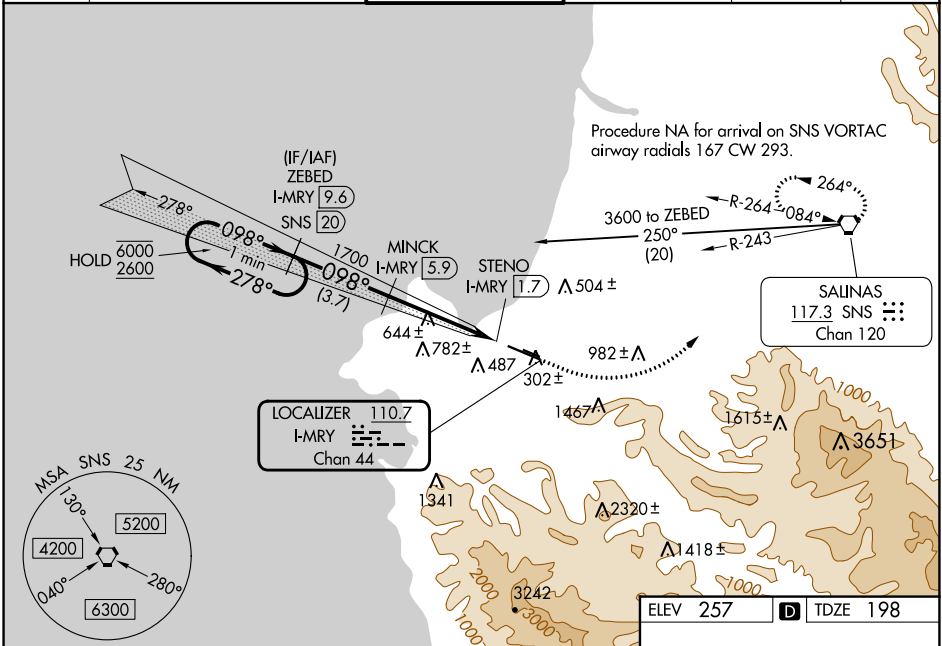
DME required.

▼
▲ Circling NA south of Rwy 10R-28L.
For inop ALS, increase S-ILS 10R all Cats visibility to RVR 6000, and increase S-LOC 10R Cat C and D visibility to 2 SM.

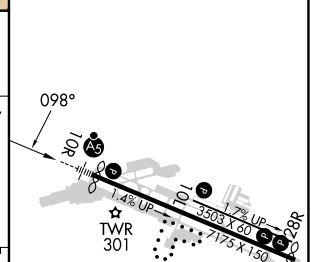
MALSRL
45

MISSED APPROACH: Climb to 600 then climbing left turn to 5000 on heading 030° and on SNS VORTAC R-243 to SNS VORTAC and hold, continue climb-in-hold to 5000. # Missed approach requires minimum climb of 265 feet per NM to 1360.

ATIS 119.25	NORCAL APP CON 133.0 251.15 (001°-135°) 127.15 307.125 (136°-360°)	MONTEREY TOWER * 118.4 (CTAF) 257.8	GND CON 120.875 348.6	CLNC DEL 135.45	UNICOM 122.95
-----------------------	----------------------------------------------------------------------------------------	------------------------------------------------------	---------------------------------	---------------------------	-------------------------



ELEV 257	TDZE 198
----------	----------



CATEGORY	A	B	C	D
S-ILS 10R#		398/24	200 (200-½)	
S-ILS 10R		583/35	385 (400-⅝)	
S-LOC 10R	920/24	722 (700-½)	920-1⅝	722 (700-1⅝)
C CIRCLING	920-1	663 (700-1)	1280-3 1023 (1100-3)	NA

MIRL Rwy 10L-28R
HIRL Rwy 10R-28L
REIL Rwy 28L
REIL Rwy 10L and 28R

SW-2, 21 MAR 2024 to 18 APR 2024

SW-2, 21 MAR 2024 to 18 APR 2024