

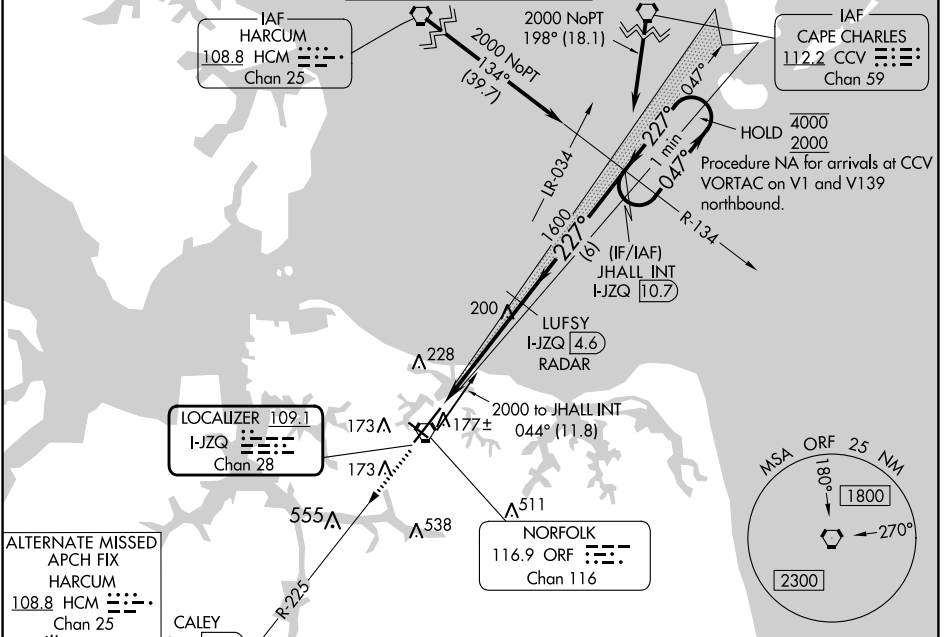
LOC/DME I-JZQ <b>109.1</b> Chan 28	APP CRS <b>227°</b>	Rwy Idg TDZE Apt Elev <b>8995</b> <b>26</b> <b>27</b>
--	------------------------	--

# ILS or LOC RWY 23

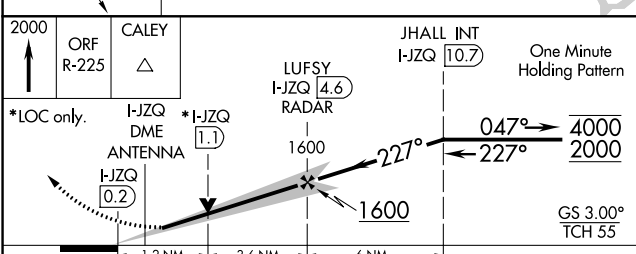
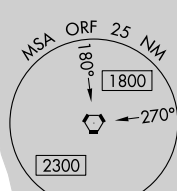
NORFOLK INTL (ORF)

DME or RADAR required.		MALSR	MISSED APPROACH: Climb to 2000 on ORF VORTAC R-225 to CALEY/ORF 11.5 DME/RADAR and hold.	
------------------------	--	-------	--	--

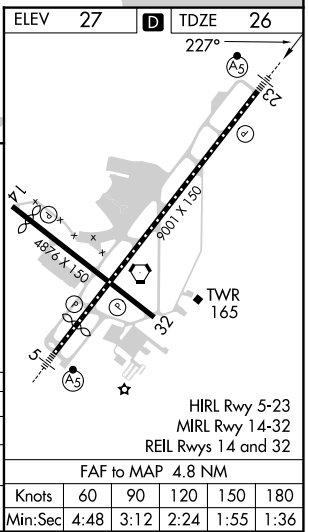
ATIS <b>127.15</b>	NORFOLK APP CON <b>118.9 353.7</b>	NORFOLK TOWER <b>120.8 257.8</b>	GND CON <b>121.9</b>	CLNC DEL <b>118.5</b>
-----------------------	---------------------------------------	-------------------------------------	-------------------------	--------------------------



ALTERNATE MISSED APCH FIX  
APCH FIX  
HARCUM  
108.8 HCM  
Chan 25



CATEGORY	A	B	C	D
S-ILS 23		226-1/2	200 (200-1/2)	
S-LOC 23	460-1/2	434 (500-1/2)	460-3/4	434 (500-3/4)
CIRCLING	480-1 453 (500-1)	540-1 513 (600-1)	540-1 1/2 513 (600-1 1/2)	900-2 3/4 873 (900-2 3/4)



NE-3, 21 MAR 2024 to 18 APR 2024

NE-3, 21 MAR 2024 to 18 APR 2024

Knots	60	90	120	150	180
Min:Sec	4:48	3:12	2:24	1:55	1:36