

APP CRS 317°	Rwy Idg TDZE Apt Elev	3901 25 26
------------------------	-----------------------------	---------------------------------------

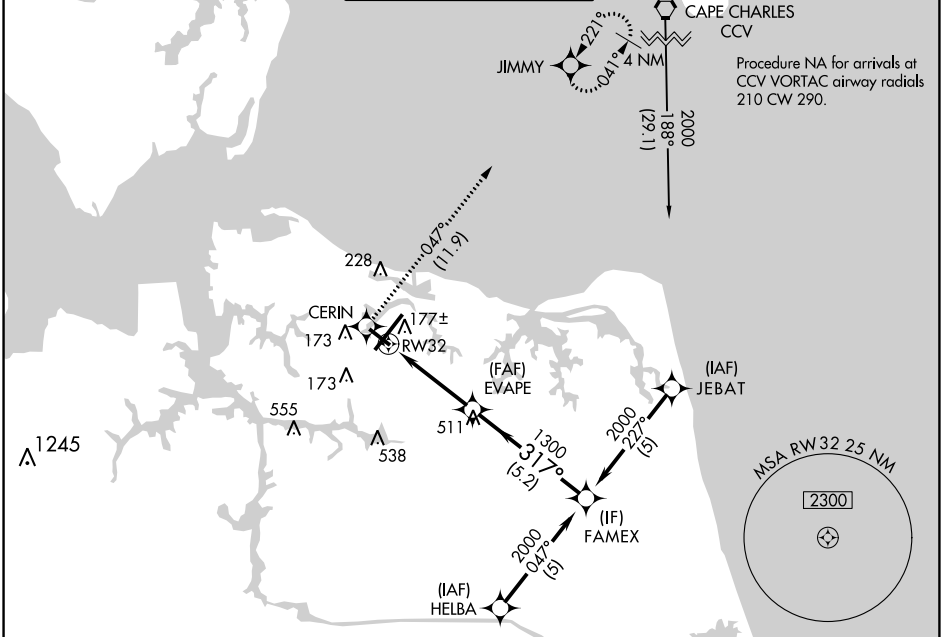
RNAV (GPS) RWY 32

NORFOLK INTL (ORF)

▽ DME/DME RNP-0.3 NA. Helicopter visibility reduction below 3/4 SM NA.

▲ MISSED APPROACH: Climb to 2000 direct CERIN and on track 047° to JIMMY and hold.

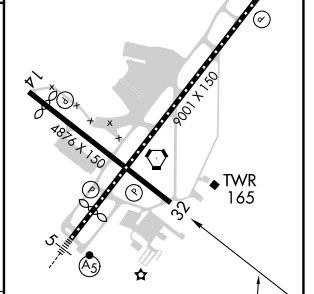
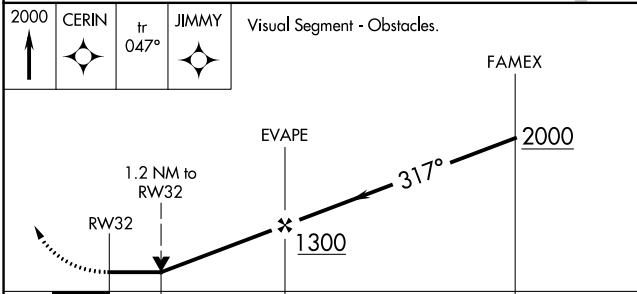
ATIS 127.15	NORFOLK APP CON 118.9 353.7	NORFOLK TOWER 120.8 257.8	GND CON 121.9	CLNC DEL 118.5
-----------------------	---------------------------------------	-------------------------------------	-------------------------	--------------------------



Procedure NA for arrivals at SUNNS on V139 southwest bound.

SUNNS \swarrow 2000 056° (23-7)

ELEV 26	D TDZE 25
---------	------------------



CATEGORY	A	B	C	D
LNNAV MDA	440-1	415 (500-1)	440-1½	415 (500-1½)
CIRCLING	480-1 454 (500-1)	540-1 514 (600-1)	540-1½ 514 (600-1½)	900-2¾ 874 (900-2¾)

REIL Rwy 14 and 32
HIRL Rwy 5-23
MIRL Rwy 14-32

NE-3, 21 MAR 2024 to 18 APR 2024

NE-3, 21 MAR 2024 to 18 APR 2024