


APP CRS	Rwy Idg	<b>8995</b>
<b>227°</b>	TDZE	<b>26</b>
	Apt Elev	<b>27</b>

# RNAV (RNP) Y RWY 23

NORFOLK INTL (ORF)

**▼** For uncompensated Baro-VNAV systems, procedure NA below -9°C (16°F) or above 54°C (130°F). GPS required. For inop ALS, increase RNP 0.10 DA visibility all Cats to 1½ SM, increase RNP 0.30 DA visibility all Cats to 1¾ SM.

**MALS**  
  
**MISSED APPROACH:** Climb to 2000 on track 227° to CALEY and hold.

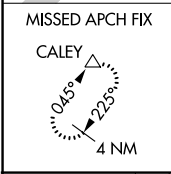
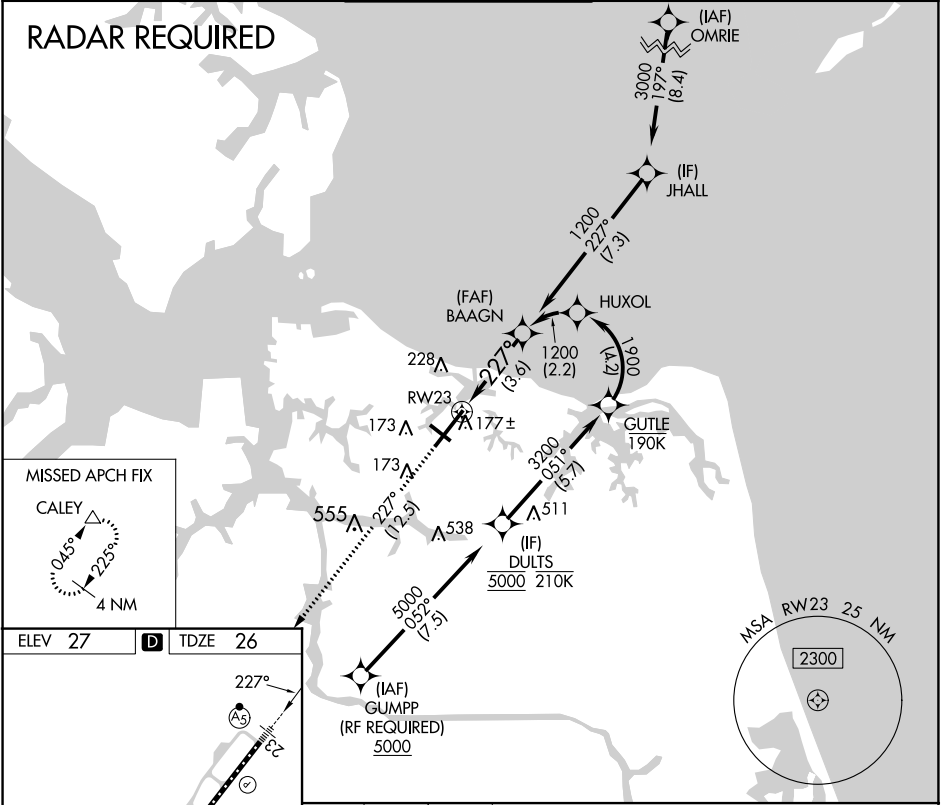
ATIS  
**127.15**

NORFOLK APP CON  
**118.9 353.7**

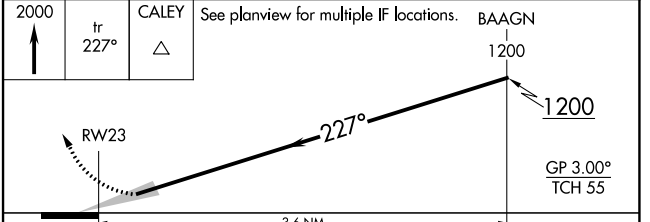
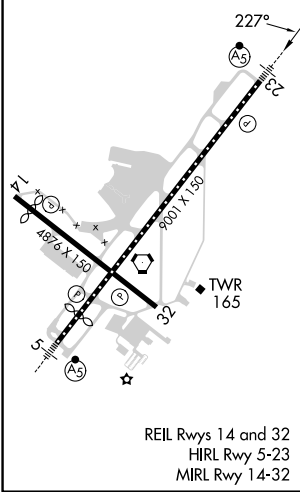
NORFOLK TOWER  
**120.8 257.8**

GND CON  
**121.9**

CLNC DEL  
**118.5**



ELEV 27 **D** TDZE 26



CATEGORY	A	B	C	D
RNP 0.10 DA		432-¾	406 (500-¾)	
RNP 0.30 DA		491-1	465 (500-1)	

## AUTHORIZATION REQUIRED

NE-3, 21 MAR 2024 to 18 APR 2024

NE-3, 21 MAR 2024 to 18 APR 2024