

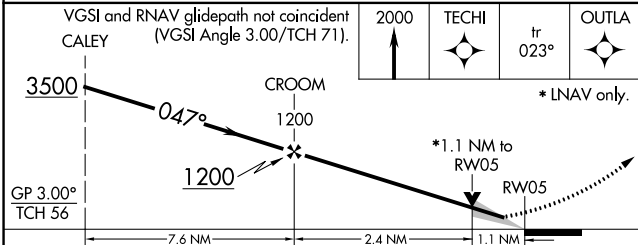
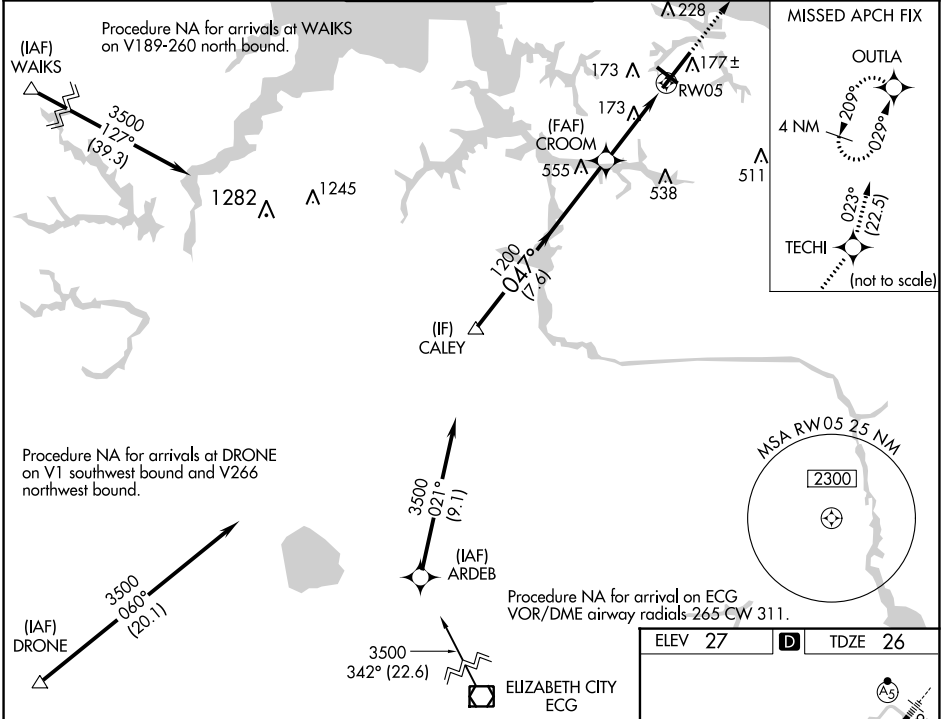
WAAS CH 50222 W05A	APP CRS 047°	Rwy Idg TDZE Apt Elev	7809 26 27
--	------------------------	-----------------------------	---------------------------------------

RNAV (GPS) Z RWY 5

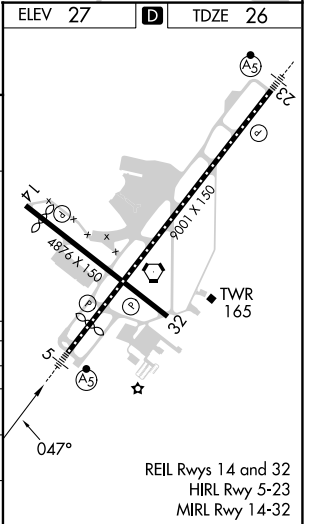
NORFOLK INTL (O.R.F.)

RNP APCH.	MALSR	MISSED APPROACH:
<p>▼ For uncompensated Baro-VNAV systems, LNAV/VNAV NA below -9°C or above 54°C.</p> <p>▲ For inop ALS, increase LNAV/VNAV all Cats visibility to RVR 4500 and LNAV Cats C and D visibility to RVR 6000. **RVR 1800 authorized with use of FD or AP or HUD to DA.</p>		<p>Climb to 2000 direct TECHI then on track 023° to OUTLA and hold.</p>

ATIS 127.15	NORFOLK APP CON 118.9 353.7	NORFOLK TOWER 120.8 257.8	GND CON 121.9	CLNC DEL 118.5
-----------------------	---------------------------------------	-------------------------------------	-------------------------	--------------------------



CATEGORY	A	B	C	D
LPV DA**		226/24	200 (200-½)	
LNAV/VNAV DA		306/24	280 (300-½)	
LNAV MDA	440/24	414 (500-½)	440/40	414 (500-¾)
CIRCLING	480-1 453 (500-1)	540-1 513 (600-1)	540-1½ 513 (600-1½)	900-2¾ 873 (900-2¾)



NE-3, 21 MAR 2024 to 18 APR 2024

NE-3, 21 MAR 2024 to 18 APR 2024