

D-ATIS 133.775
CLNC DEL
121.1
CPDLC
GND CON
121.9 (Rwys 10L/R, 28L/28R, 15/33)
121.75 (Rwy 12/30)
OAKLAND TOWER
118.3 291.65 (Rwys 10L/R, 28L/28R, 15/33)
127.2 256.9 (Rwy 12/30)
NORCAL DEP CON
135.1 307.2

**TOP ALTITUDE:
ASSIGNED BY ATC**

DEPARTURE ROUTE DESCRIPTION

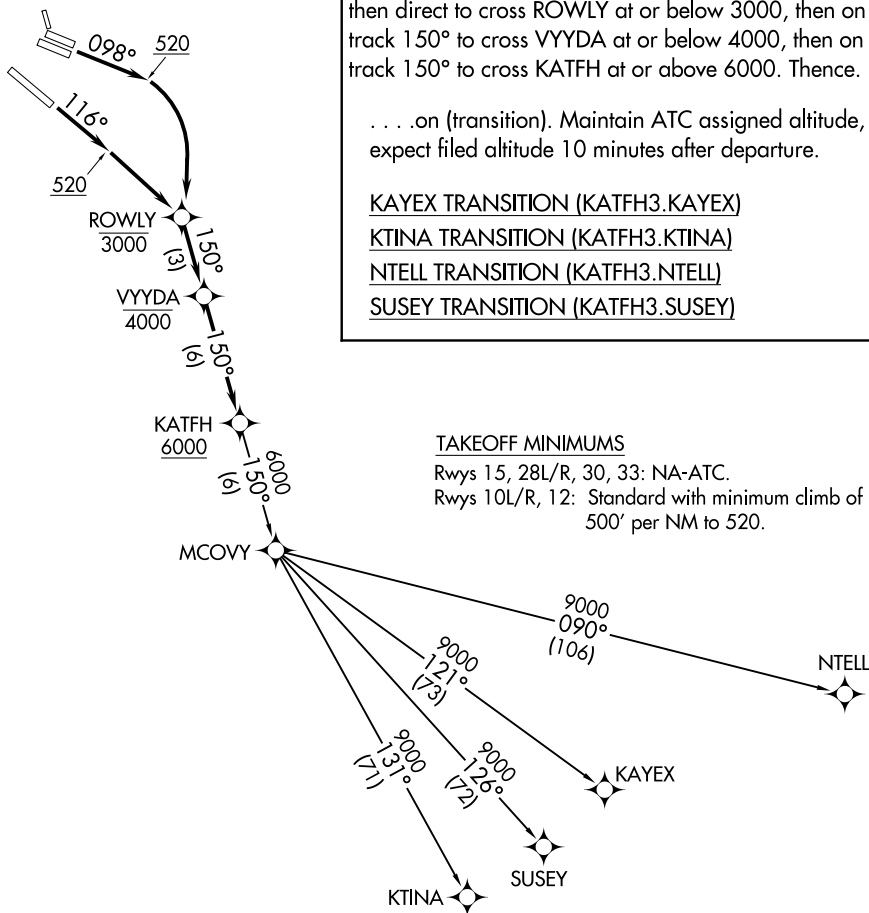
TAKEOFF RUNWAYS 10L, 10R: Climb on heading 098° to 520, then right turn direct to cross ROWLY at or below 3000, then on track 150° to cross VYYDA at or below 4000, then on track 150° to cross KATFH at or above 6000. Thence. . . .
TAKEOFF RUNWAY 12: Climb on heading 116° to 520, then direct to cross ROWLY at or below 3000, then on track 150° to cross VYYDA at or below 4000, then on track 150° to cross KATFH at or above 6000. Thence. . . .

. . . .on (transition). Maintain ATC assigned altitude, expect filed altitude 10 minutes after departure.

- KAYEX TRANSITION (KATFH3.KAYEX)
- KTINA TRANSITION (KATFH3.KTINA)
- NTELL TRANSITION (KATFH3.NTELL)
- SUSEY TRANSITION (KATFH3.SUSEY)

TAKEOFF MINIMUMS

Rwys 15, 28L/R, 30, 33: NA-ATC.
Rwys 10L/R, 12: Standard with minimum climb of 500' per NM to 520.



- NOTE: RNAV 1.
- NOTE: DME/DME/IRU or GPS required.
- NOTE: RADAR required for non-GPS equipped aircraft.

LOSHN
EBAYE

CISKO

NOTE: Chart not to scale.

SW-2, 21 MAR 2024 to 18 APR 2024

SW-2, 21 MAR 2024 to 18 APR 2024