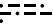



**TOP ALTITUDE:
ASSIGNED BY ATC**


D-ATIS
133.775
CLNC DEL
121.1
CPDLC
GND CON
121.9 (Rwys 28L/R)
121.75 (Rwy 30)
OAKLAND TOWER
118.3 291.65 (Rwys 28L/R)
127.2 256.9 (Rwy 30)
NORCAL DEP CON
135.1 307.2


POINT REYES
113.7 PYE 
Chan 84

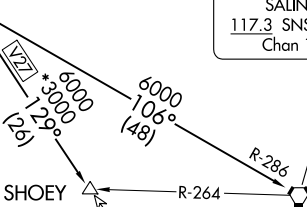
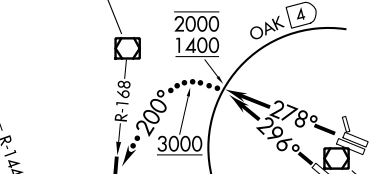
SAUSALITO
116.2 SAU 
Chan 109

OAKLAND
116.8 OAK 
Chan 115

SAN JOSE
114.1 SJC 
Chan 88

SALINAS
117.3 SNS 
Chan 120

BIG SUR
114.0 BSR 
Chan 87



NOTE: RADAR required.
NOTE: DME required.

TAKEOFF MINIMUMS

Rwys 10L, 10R, 12, 15, 33: NA- Air traffic.
Rwys 28L, 28R, 30: Standard with minimum climb of
375' per NM to 2000.

NOTE: Chart not to scale.

(CONTINUED ON FOLLOWING PAGE)

SW-2, 21 MAR 2024 to 18 APR 2024

SW-2, 21 MAR 2024 to 18 APR 2024