

(OAK6.OAK) 24025

OAKLAND SIX DEPARTURE

AL-294 (FAA)

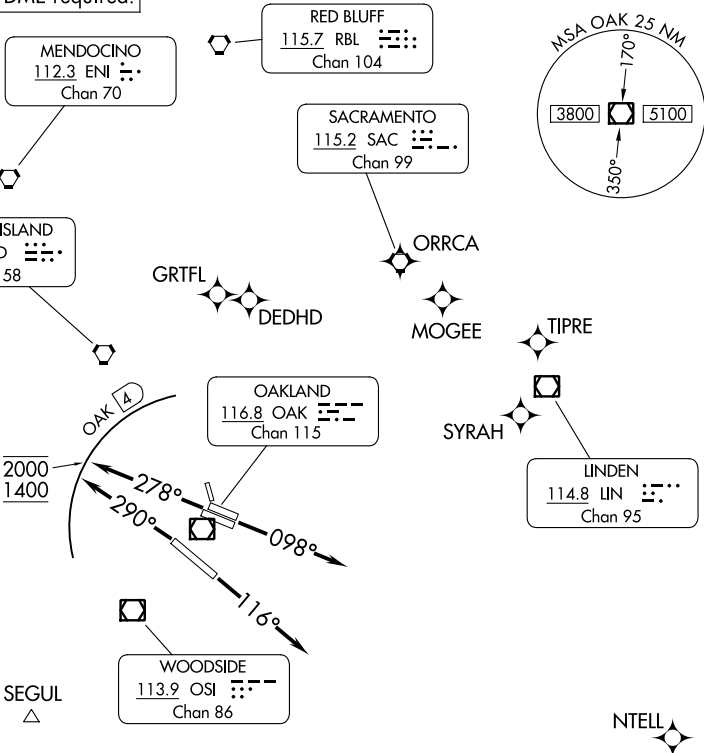
METRO OAKLAND INTL (OAK)
OAKLAND, CALIFORNIA

D-ATIS
133.775
CLNC DEL
121.1
CPDLC
NORCAL DEP CON
120.9 323.2

RNAV 1-GPS. From ALCOA, BEBOP, CINNY, CISKO, DEDHD, EBAYE,
GRTFL, LOSHN, MOGEE, NTELL, ORRCA, SYRAH, or TIPRE.

RADAR and DME required.

**TOP ALTITUDE:
ASSIGNED BY ATC**



SW-2, 21 MAR 2024 to 18 APR 2024

SW-2, 21 MAR 2024 to 18 APR 2024

TAKEOFF MINIMUMS

Rwys 15, 33: NA- ATC.

Rwy 10L: Standard with minimum climb of 340'/NM to 2300.

Rwy 10R: Standard with minimum climb of 330'/NM to 2300.

Rwy 12: Standard with minimum climb of 270'/NM to 1400.

Rwys 28L/R, 30: Standard with minimum climb of 375'/NM to 2000.

NOTE: Use the SILENT, HUSSH, or SUNNE DEPARTURE during the periods of 2200-0700 local in lieu of the OAKLAND DEPARTURE.

(CONTINUED ON FOLLOWING PAGE)

NOTE: Chart not to scale.

OAKLAND SIX DEPARTURE

(OAK6.OAK) 25JAN24

OAKLAND, CALIFORNIA
METRO OAKLAND INTL (OAK)