

APP CRS	Rwy Idg	10000
296°	TDZE	9
	Apt Elev	9

RNAV (RNP) Z RWY 30

METRO OAKLAND INTL (OAK)

GPS required. For uncompensated Baro-VNAV systems, procedure NA below 1°C (34°F) or above 54°C (130°F). For inop ALS increase RNP 0.11 visibility all Cats to RVR 4000.

OAKLAND TOWER
118.3 291.65 (Rwys 10L/R-28L/R, 15-33)
127.2 256.9 (Rwy 12-30)

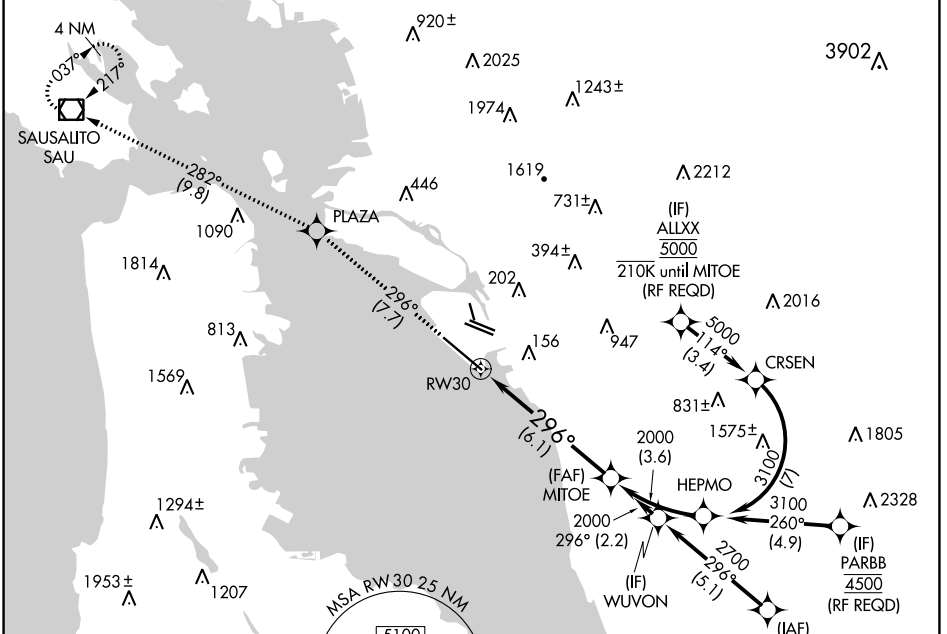
ALSf-2

MISSED APPROACH: Climb to 4000 on track 296° to PLAZA and on track 282° to SAU VOR/DME and hold, continue climb-in-hold to 4000.

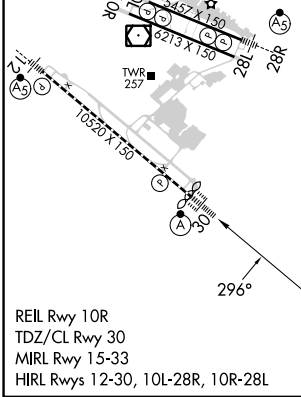
GND CON
121.9 (Rwys 10L/R-28L/R, 15-33)
121.75 (Rwy 12-30)

CLNC DEL
121.1

CPDLC

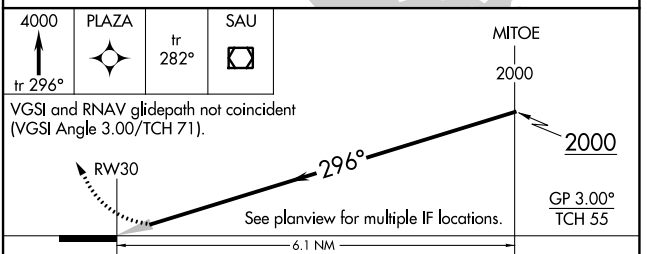


ELEV	9	D	TDZE	9
------	---	----------	------	---



MSA RW 30 25 NM
 5100

RADAR REQUIRED



CATEGORY	A	B	C	D
RNP 0.11 DA		267/24	258 (300-½)	
RNP 0.30 DA		317/24	308 (400-½)	

AUTHORIZATION REQUIRED

SW-2, 21 MAR 2024 to 18 APR 2024

SW-2, 21 MAR 2024 to 18 APR 2024