


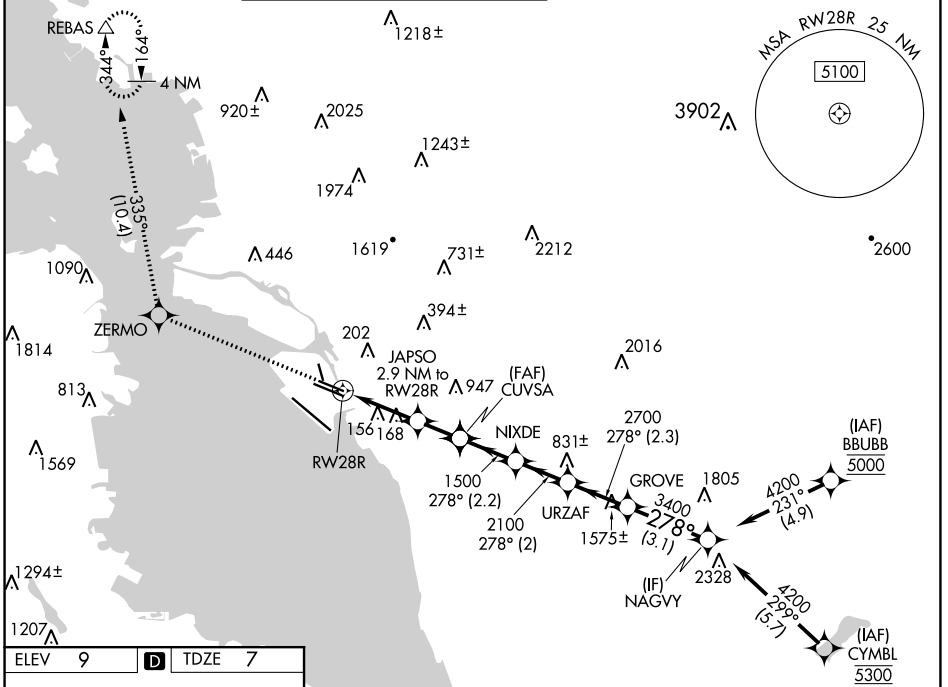
WAAS CH 42535 W28B	APP CRS 278°	Rwy Idg TDZE Apt Elev	5457 7 9
--	------------------------	-----------------------------	-------------------------------------

RNAV (GPS) Y RWY 28R

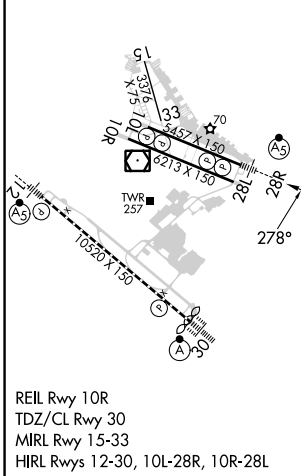
METRO OAKLAND INTL (OAK)

<p>▼ DME/DME RNP-0.3 NA. For uncompensated Baro-VNAV systems, LNAV/VNAV NA below 1°C (34°F) or above 54°C (130°F). #RVR 1800 authorized with use of FD or AP or HUD to DA.</p>	<p>MALSR</p> 	<p>MISSED APPROACH: Climb to 3000 direct ZERMO and on track 335° to REBAS and hold.</p>
---	---	--

D-ATIS 133.775	NORCAL APP CON 125.35 263.15	<p>OAKLAND TOWER</p> <p>118.3 291.65 (Rwys 10L/R-28L/R, 15-33) 127.2 256.9 (Rwy 12-30)</p>	<p>GND CON</p> <p>121.9 (Rwys 10L/R-28L/R, 15-33) 121.75 (Rwy 12-30)</p>	CLNC DEL 121.1	CPDLC
--------------------------	--	---	---	--------------------------	-------



ELEV 9	D	TDZE 7
--------	----------	--------



3000	ZERMO	tr	REBAS				
		335°					
*LNAV only.							
	RWY 28R	JAPSO 2.9 NM to RWY 28R	CUVSA 1500	NIXDE 2100	URZAF 2700	GROVE 3400	NAGVY 4200
	*1.2 NM to RWY 28R						
	980*	1500					GP 3.00° TCH 53
	1.2 NM	1.7 NM	1.6 NM	2.2 NM	2.3 NM	3.1 NM	
CATEGORY	A		B		C		D
LPV DA #	207/24		200 (200-½)				
LNAV/VNAV DA	387/40		380 (400-¾)				
LNAV MDA	440/24		433 (500-½)		440/40		433 (500-¾)
C CIRCLING	560-1		551 (600-1)		660-1¾ 651 (700-1¾)		1400-3 1391 (1400-3)

SW-2, 21 MAR 2024 to 18 APR 2024

SW-2, 21 MAR 2024 to 18 APR 2024