

SILENT THREE DEPARTURE

METRO OAKLAND INTL (OAK)
OAKLAND, CALIFORNIA

AL-294 (FAA)

D-ATIS
133.775
CLNC DEL
121.1
CPDLC
NORCAL DEP CON
120.9 323.2

RED BLUFF
115.7 RBL
Chan 104

**TOP ALTITUDE:
ASSIGNED BY ATC**

MENDOCINO
112.3 ENI
Chan 70

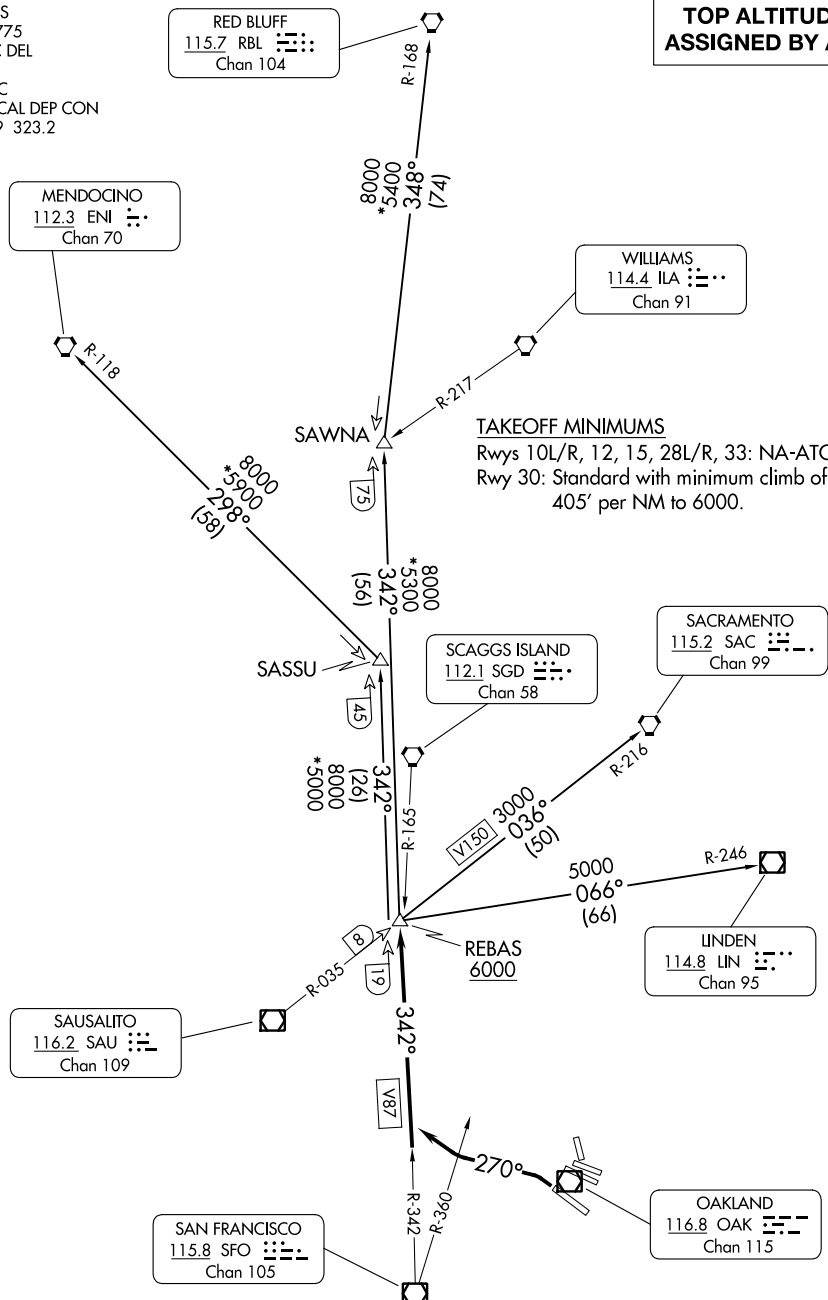
WILLIAMS
114.4 IIA
Chan 91

TAKEOFF MINIMUMS

Rwys 10L/R, 12, 15, 28L/R, 33: NA-ATC.
Rwy 30: Standard with minimum climb of
405' per NM to 6000.

SW-2, 21 MAR 2024 to 18 APR 2024

SW-2, 21 MAR 2024 to 18 APR 2024



(CONTINUED ON FOLLOWING PAGE)

NOTE: Chart not to scale.

SILENT THREE DEPARTURE

OAKLAND, CALIFORNIA
METRO OAKLAND INTL (OAK)