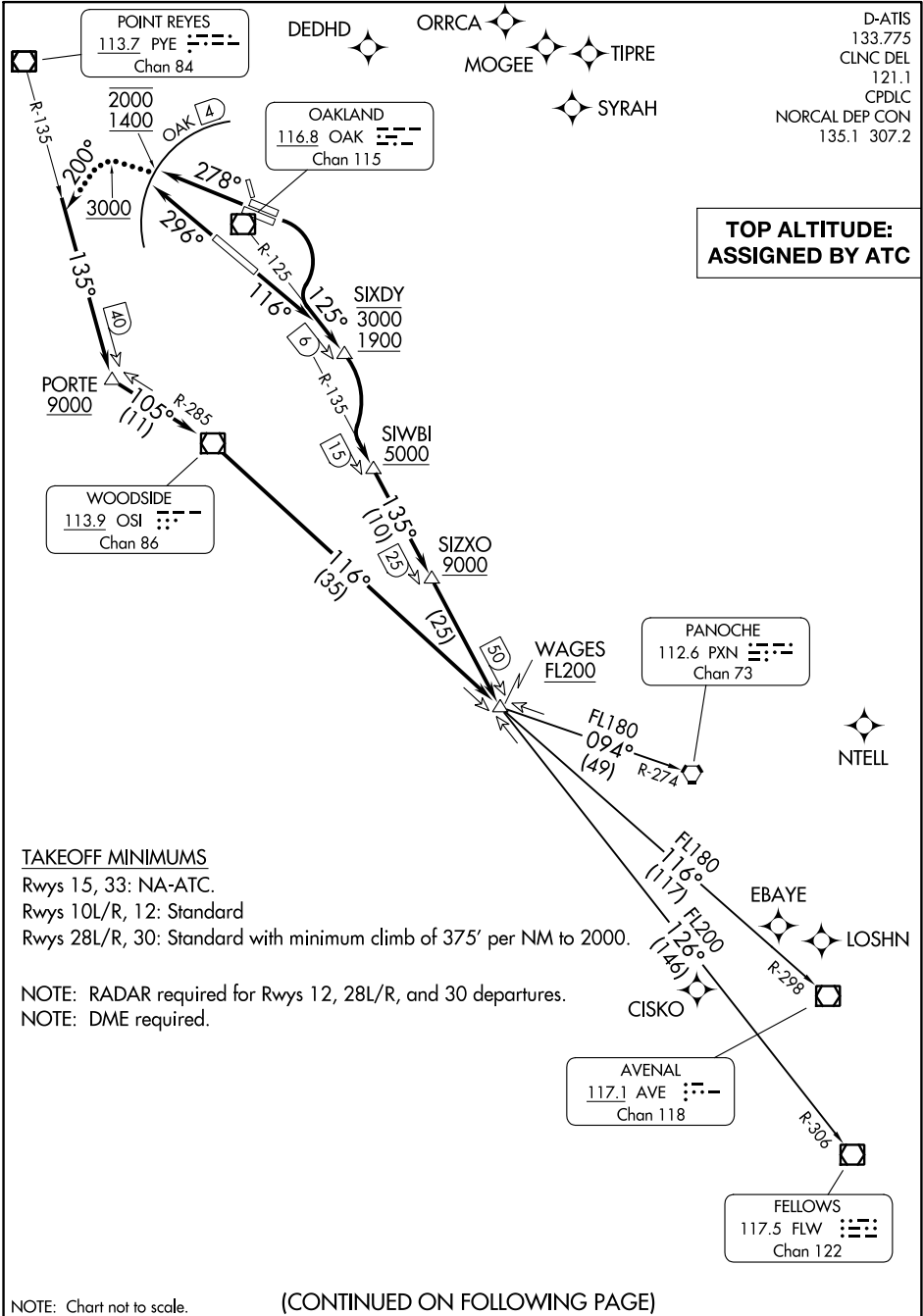


SKYLINE ONE DEPARTURE

AL-294 (FAA)

D-ATIS
133.775
CLNC DEL
121.1
CPDLC
NORCAL DEP CON
135.1 307.2



**TOP ALTITUDE:
ASSIGNED BY ATC**

TAKEOFF MINIMUMS

Rwys 15, 33: NA-ATC.
Rwys 10L/R, 12: Standard
Rwys 28L/R, 30: Standard with minimum climb of 375' per NM to 2000.

NOTE: RADAR required for Rwys 12, 28L/R, and 30 departures.
NOTE: DME required.

NOTE: Chart not to scale.

(CONTINUED ON FOLLOWING PAGE)

SW-2, 21 MAR 2024 to 18 APR 2024

SW-2, 21 MAR 2024 to 18 APR 2024