

HI-VOR Z RWY 32

VOR HDF 112.05	APCH CRS 315°	Rwy Idg 13,302 TDZE 1497 Arpt Elev 1536
--------------------------	-------------------------	--------------------------------------------------------------------

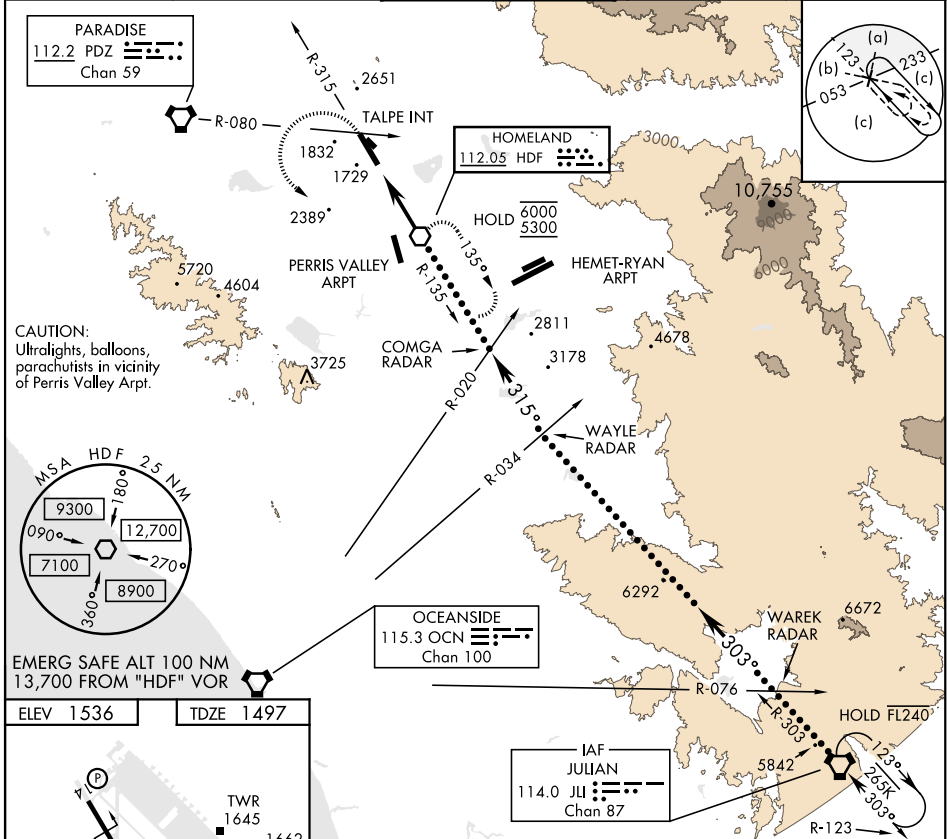
AL-348 [USAF]

MARCH ARB (KRIV)

* When ALS inop, increase CAT CDE vis to 1½ miles.
 ** Circling not authorized NE of Rwy 14-32. Rapid rising terrain.

 ALSF-1 MISSED APPROACH: Climb to 5300 on HDF VOR R-315 to TALPE, then turn left direct HDF, continue climb in hold to 5300.

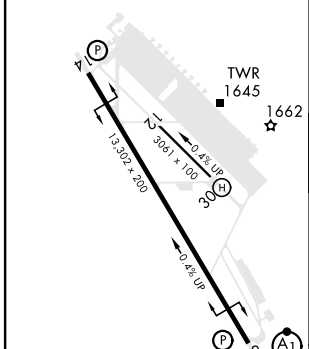
ATIS 134.75 239.05	APP/DEP CON★ 133.5 306.975	TOWER 127.65 253.5	GND CON 121.75 335.8	CLNC DEL 127.775 268.7
------------------------------	--------------------------------------	------------------------------	--------------------------------	----------------------------------



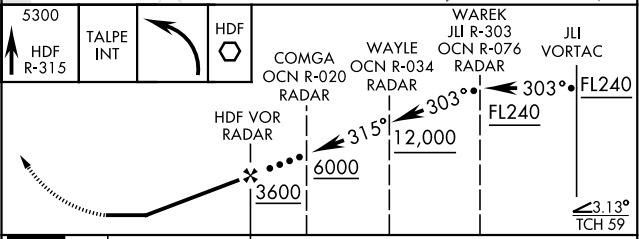
CAUTION:
Ultralights, balloons,
parachutists in vicinity
of Perris Valley Arpt.

EMERG SAFE ALT 100 NM
13,700 FROM "HDF" VOR

ELEV 1536	TDZE 1497
-----------	-----------



HIRL Rwy 14-32	FAF to MAP 5.2 NM
Knots	120 140 160 180 200
Min:Sec	2:36 2:14 1:57 1:44 1:34



CATEGORY	C	D	E
S-32 *	2040/60	543 (600-1½)	
CIRCLING **	2300-2¼ 764 (800-2¼)	2440-3 904 (1000-3)	2840-3 1304 (1400-3)

HI-VOR Z RWY 32

SW-3, 21 MAR 2024 to 18 APR 2024

SW-3, 21 MAR 2024 to 18 APR 2024