

TACAN Y RWY 32

TACAN RIV Chan 77	APCH CRS 318°	Rwy ldg 13,302 TDZE 1497 Arpt Elev 1536
----------------------	------------------	---

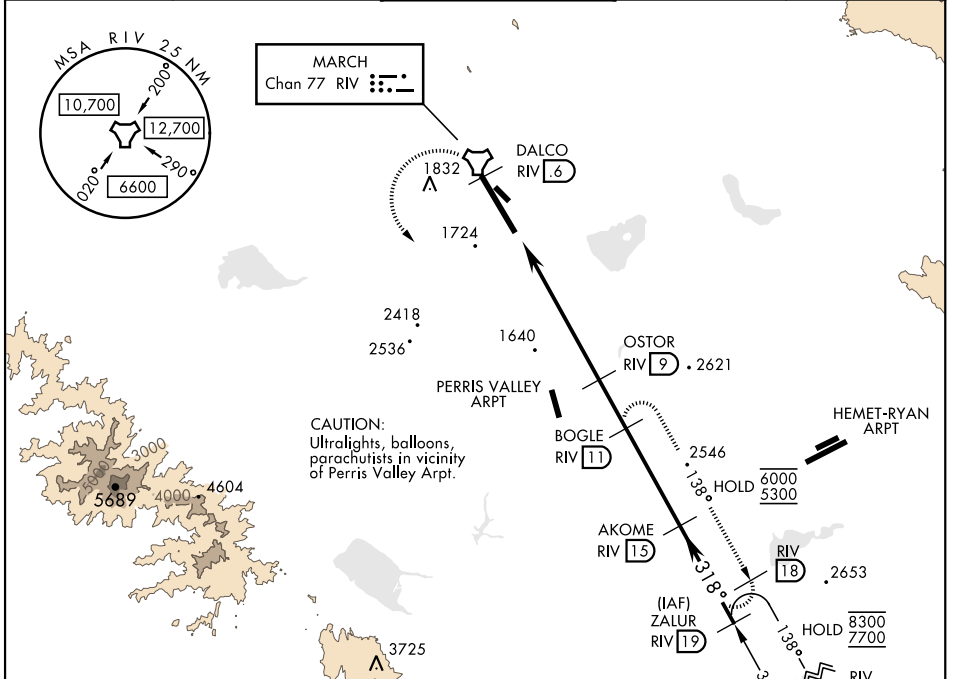
AL-348 [USAF]

MARCH ARB (KRIV)

▼ *When ALS inop, increase CAT AB RVR to 55 and vis to 1 mile, CAT CDE vis to 1½ miles.
 ** Circling not authorized NE of Rwy 14-32. Rapid rising terrain.

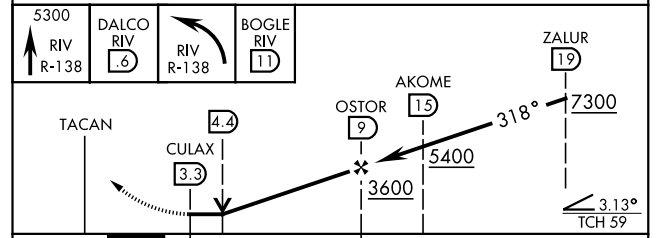
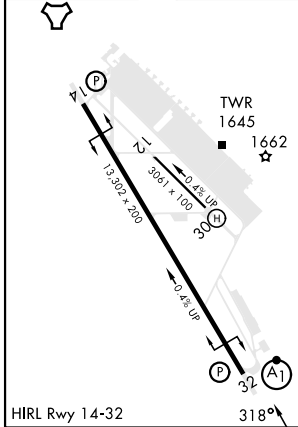
ALSF-1 (A1) MISSED APPROACH: Climb to 5300 on RIV TACAN R-138 to DALCO, then turn left to intercept RIV R-138 direct BOGLE, continue climb in hold to 5300.

ATIS 134.75 239.05	APP/DEP CON * 133.5 306.975	TOWER 127.65 253.5	GND CON 121.75 335.8	CLNC DEL 127.775 268.7
-----------------------	--------------------------------	-----------------------	-------------------------	---------------------------



EMERG SAFE ALT 100 NM 13,700

ELEV 1536	TDZE 1497
-----------	-----------



CATEGORY	A	B	C	D	E
S-32 *	2040/24	543 (600-½)	2040/60	543 (600-1½)	
CIRCLING **	2180-1 644 (700-1)	2260-1 724 (800-1)	2300-2¼ 764 (800-2¼)	2440-3 904 (1000-3)	2840-3 1304(1400-3)

TACAN Y RWY 32

SW-3, 21 MAR 2024 to 18 APR 2024

SW-3, 21 MAR 2024 to 18 APR 2024