

| | | |
|---|------------------------|--|
| LOC/DME I-MOY 109.5 Chan 32 | APP CRS 164° | Rwy Idg 12002 TDZE 4227 Apt Elev 4227 |
|---|------------------------|--|

ILS RWY 16L (CAT II & III)

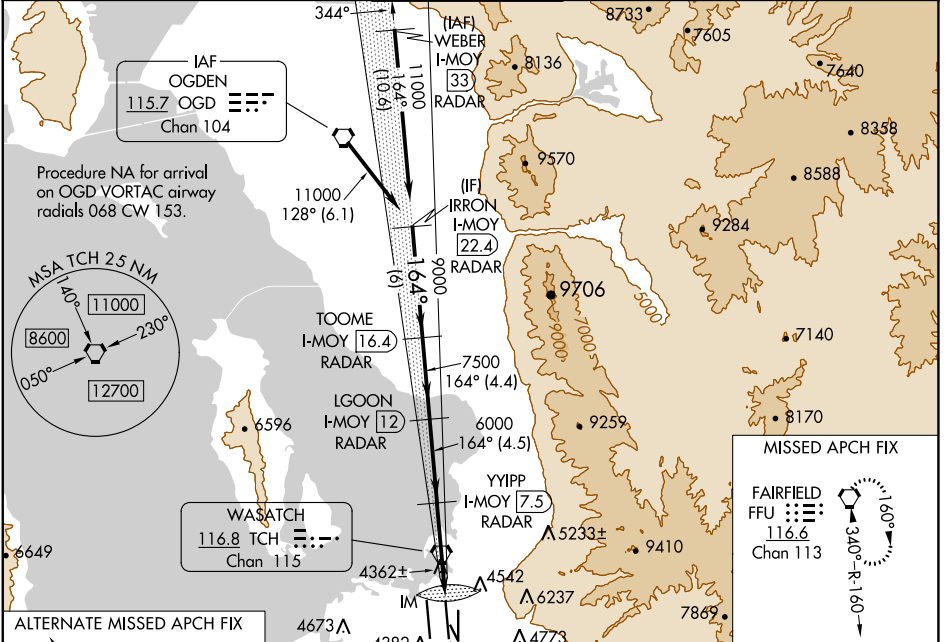
SALT LAKE CITY INTL (SLC)

Simultaneous approach authorized. DME or RADAR required.
 CAT II: RVR 1000 authorized with specific OPSPEC, MSPEC, or LOA approval and use of autoland or HUD to touchdown.

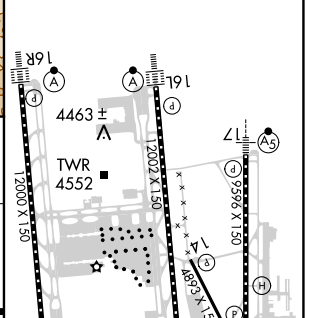
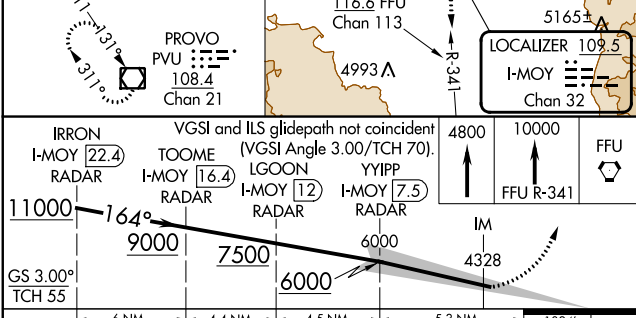
ALS-F-2

MISSED APPROACH: Climb to 4800 then climb to 10000 on FFU VORTAC R-341 to FFU VORTAC and hold.

| | | | | | |
|---------------------------------|--|---|---------------------------------|----------------------------------|-------|
| D-ATIS 124.75 125.625 | SALT LAKE CITY APP CON 125.7 284.6 | SALT LAKE CITY TOWER 119.05 257.8 | GND CON 123.775 348.6 | CLNC DEL 127.3 379.975 | CPDLC |
|---------------------------------|--|---|---------------------------------|----------------------------------|-------|



| | |
|-----------|-----------|
| ELEV 4227 | TDZE 4227 |
|-----------|-----------|



| | | | | |
|-----------|------------------------------|---|---|---|
| CATEGORY | A | B | C | D |
| S-ILS 16L | CAT II RA 108/12 100 DA 4327 | | | |
| S-ILS 16L | CAT IIIa RVR 07 | | | |
| S-ILS 16L | CAT IIIb RVR 03 | | | |
| S-ILS 16L | CAT IIIc NA | | | |

CATEGORY II & III ILS - SPECIAL AIRCREW & AIRCRAFT CERTIFICATION REQUIRED

HIRL all Rwys
 TDZ/CL Rwys 16L, 16R, 17, 34L, 34R and 35

SW-4, 21 MAR 2024 to 18 APR 2024

SW-4, 21 MAR 2024 to 18 APR 2024