

| | | |
|---|------------------------|---|
| LOC/DME I-UAT 111.9 Chan 56 | APP CRS 164° | Rwy ldg 12000 TDZE 4223 Apt Elev 4227 |
|---|------------------------|---|

ILS RWY 16R (CAT II & III)

SALT LAKE CITY INTL (SLC)

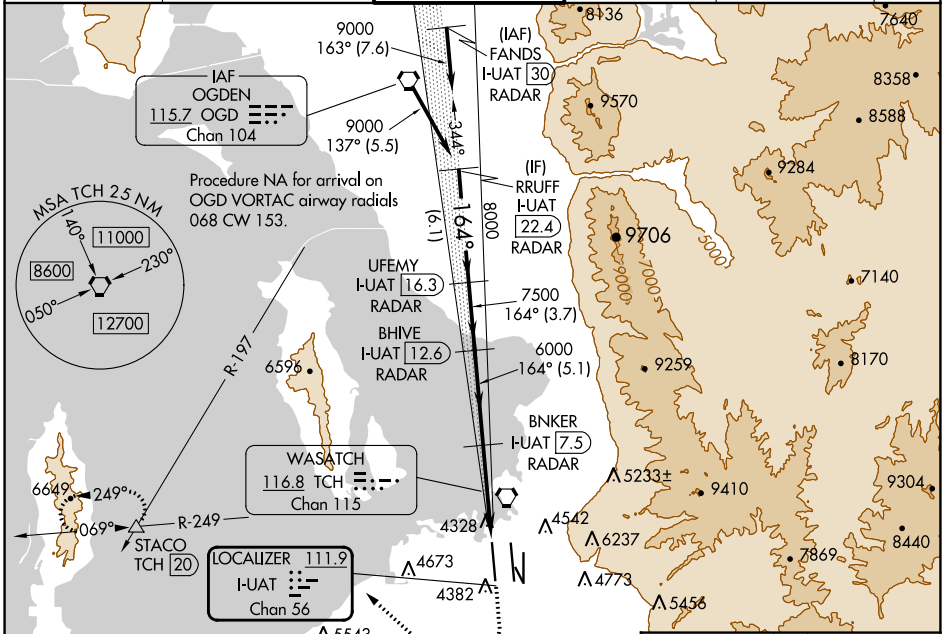
DME or RADAR required.

Simultaneous approach authorized.
CAT II: RVR 1000 authorized with specific OPSPEC, MSPEC, or LOA approval and use of autoland or HUD to touchdown.

ALSF-2

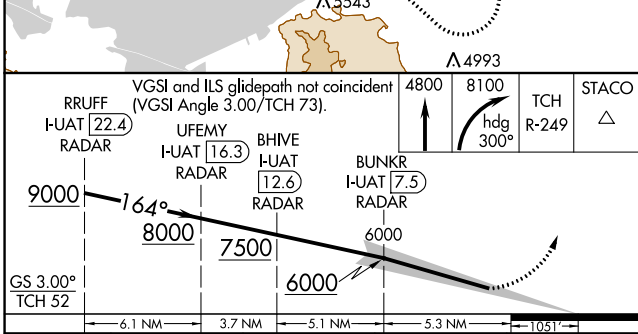
MISSED APPROACH: Climb to 4800 then climbing right turn to 8100 on heading 300° and on TCH VORTAC R-249 to STACO INT/TCH 20 DME and hold.

| | | | | | |
|---------------------------------|--|---|---------------------------------|----------------------------------|-------|
| D-ATIS 124.75 125.625 | SALT LAKE CITY APP CON 125.7 284.6 | SALT LAKE CITY TOWER 132.65 336.4 | GND CON 123.775 348.6 | CLNC DEL 127.3 379.975 | CPDLC |
|---------------------------------|--|---|---------------------------------|----------------------------------|-------|

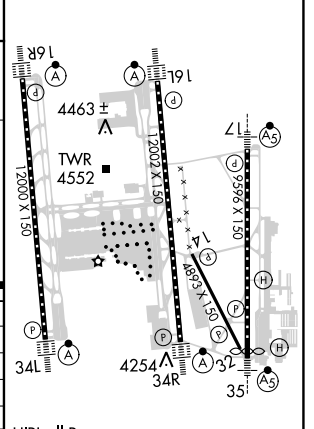


SW-4, 21 MAR 2024 to 18 APR 2024

SW-4, 21 MAR 2024 to 18 APR 2024



| | | |
|-----------|---|-----------|
| ELEV 4227 | D | TDZE 4223 |
|-----------|---|-----------|



| CATEGORY | A | B | C | D |
|-----------|------------------------------|---|--------|---|
| S-ILS 16R | CAT II RA 108/12 100 DA 4323 | | | |
| S-ILS 16R | Cat IIIa | | RVR 07 | |
| S-ILS 16R | Cat IIIb | | RVR 03 | |
| S-ILS 16R | Cat IIIc | | NA | |

CATEGORY II & III ILS - SPECIAL AIRCREW & AIRCRAFT CERTIFICATION REQUIRED

HIRL all Rwws
TDZ/CL Rwws 16L, 16R, 17, 34L, 34R, and 35