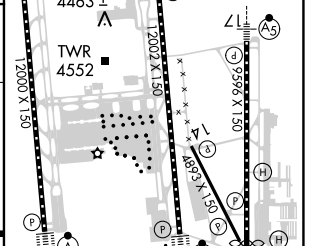
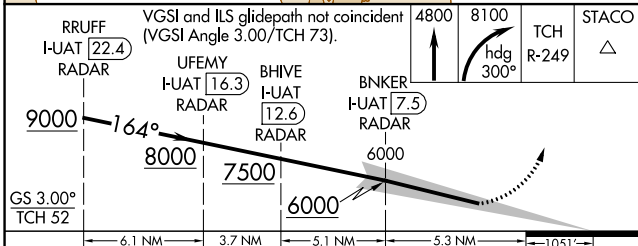
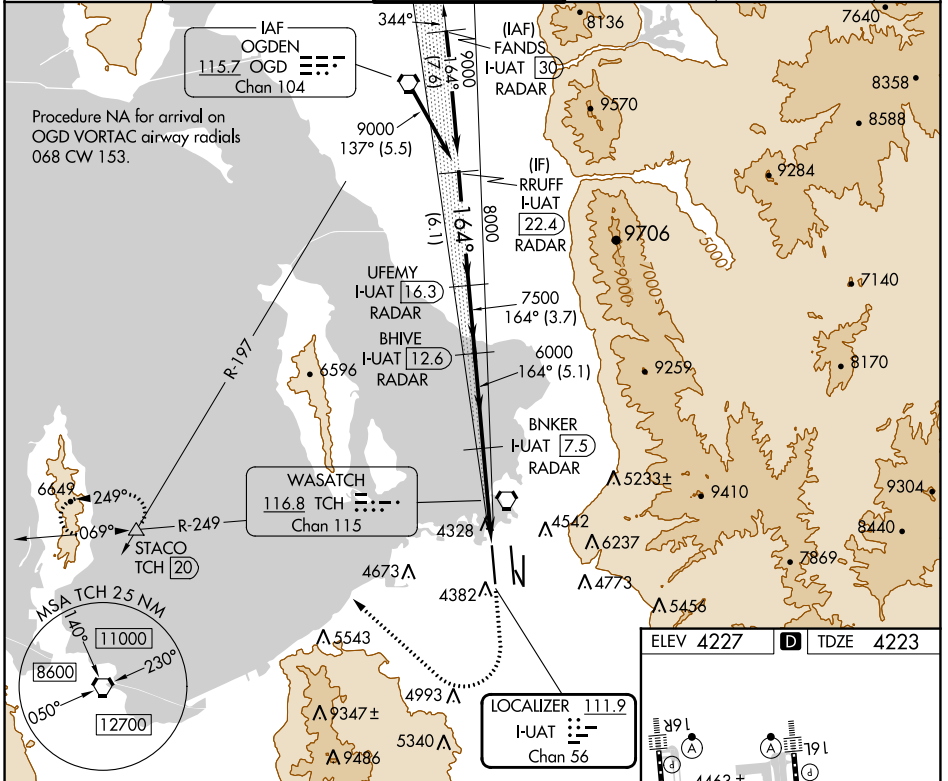


LOC/DME I-UAT 111.9 Chan 56	APP CRS 164°	Rwy ldg 12000
		TDZE 4223
		Apt Elev 4227

ILS RWY 16R (SA CAT I)

SALT LAKE CITY INTL (SLC)

DME or RADAR required.		ALSIF-2	MISSED APPROACH: Climb to 4800 then climbing right turn to 8100 on heading 300° and on TCH VORTAC R-249 to STACO INT/TCH 20 DME and hold.	
▼ Simultaneous approach authorized. Requires specific OPSPEC, MSPEC, or LOA approval and use of HUD to DH.		(A)		
D-ATIS 124.75 125.625	SALT LAKE CITY APP CON 125.7 284.6	SALT LAKE CITY TOWER 132.65 336.4	GND CON 123.775 348.6	CLNC DEL 127.3 379.975
				CPDLC



CATEGORY	A	B	C	D
S-ILS 16R	RA 157/14 150 DA 4373			
SA CATEGORY I ILS - SPECIAL AIRCREW & AIRCRAFT CERTIFICATION REQUIRED				

SW-4, 21 MAR 2024 to 18 APR 2024

SW-4, 21 MAR 2024 to 18 APR 2024

HIRL all Rwws
TDZ/CL Rwws 16L, 16R, 17, 34L, 34R, and 35