

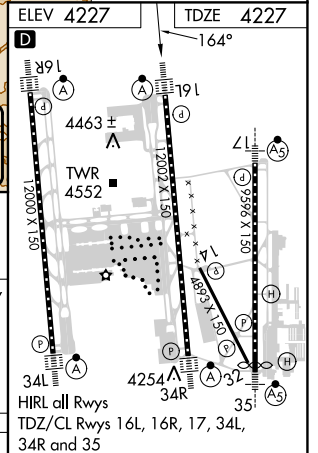
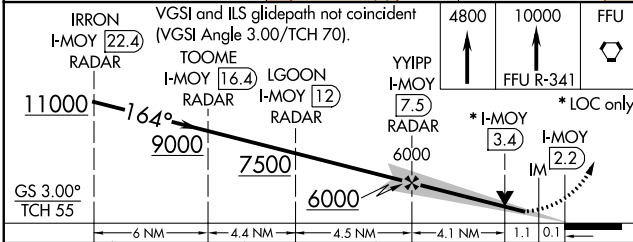
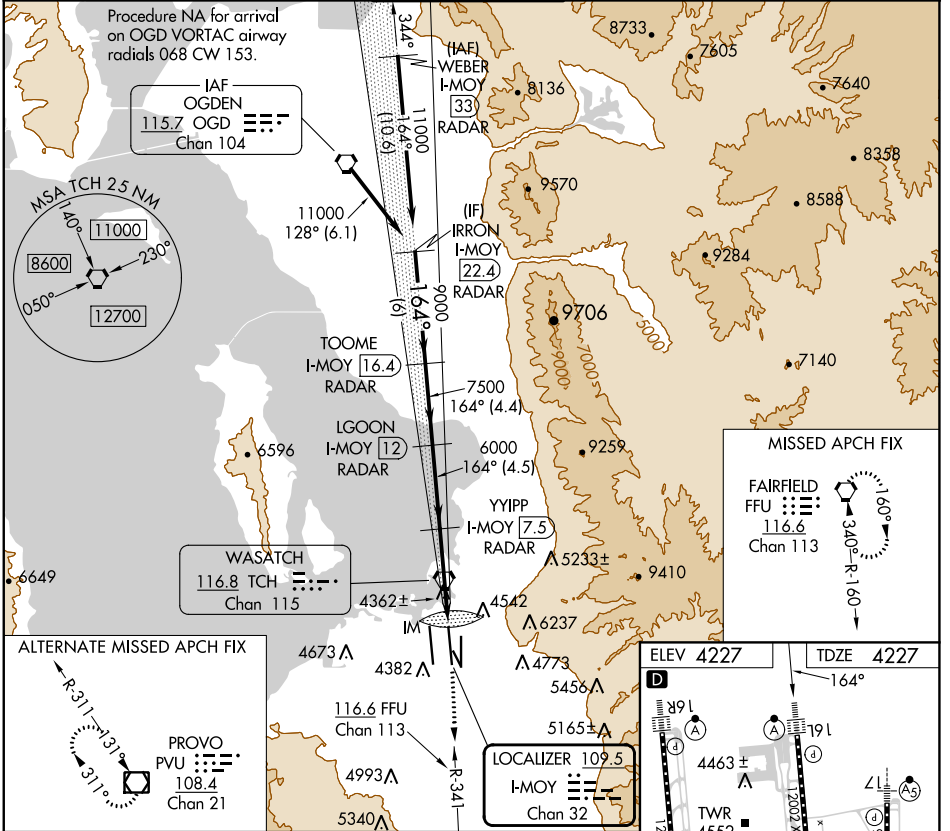
LOC/DME I-MOY <b>109.5</b> Chan <b>32</b>	APP CRS <b>164°</b>	Rwy Idg TDZE Apt Elev	<b>12002</b> <b>4227</b> <b>4227</b>
---	------------------------	-----------------------------	--

# ILS or LOC RWY 16L

SALT LAKE CITY INTL (SLC)

Simultaneous approach authorized. DME or RADAR required.	ALSF-2 	MISSED APPROACH: Climb to 4800 then climb to 10000 on FFU VORTAC R-341 to FFU VORTAC and hold.

D-ATIS <b>124.75 125.625</b>	SALT LAKE CITY APP CON <b>125.7 284.6</b>	SALT LAKE CITY TOWER <b>119.05 257.8</b>	GND CON <b>123.775 348.6</b>	CLNC DEL <b>127.3 379.975</b>	CPDLC
---------------------------------	--	---	---------------------------------	----------------------------------	-------



CATEGORY	A	B	C	D
S-ILS 16L		4427/18	200 (200-½)	
S-LOC 16L	4680/24	453 (500-½)	4680/40 453 (500-¾)	4680/50 453 (500-1)

FAF to MAP 5.3 NM					
Knots	60	90	120	150	180
Min:Sec	5:18	3:32	2:39	2:07	1:46

SW-4, 21 MAR 2024 to 18 APR 2024

SW-4, 21 MAR 2024 to 18 APR 2024