

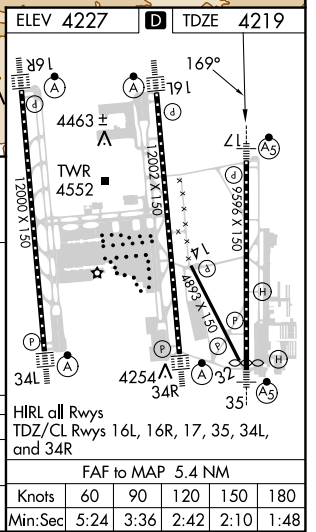
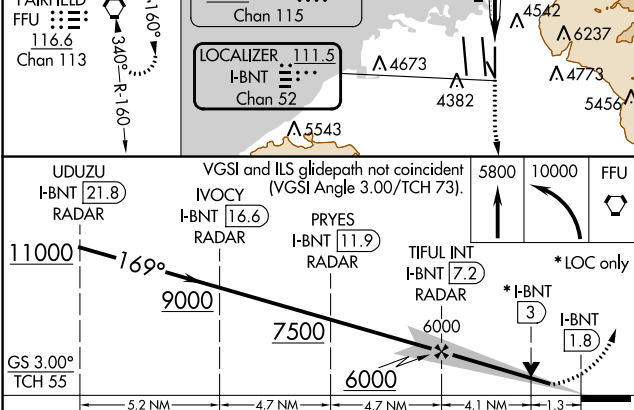
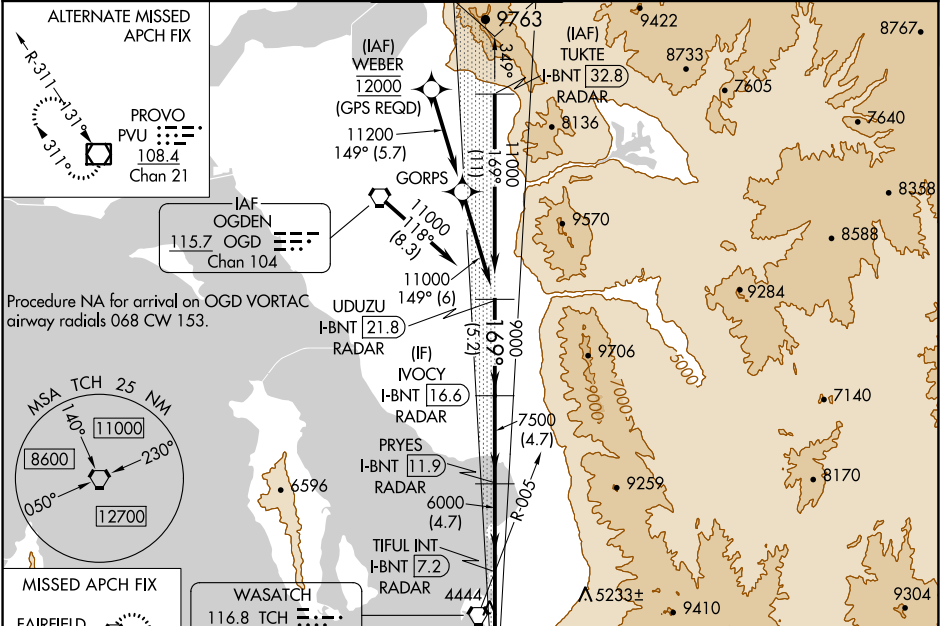
LOC/DME I-BNT <b>111.5</b> Chan 52	APP CRS <b>169°</b>	Rwy Idg TDZE Apt Elev <b>9596</b> <b>4219</b> <b>4227</b>
--	------------------------	--

# ILS or LOC RWY 17

SALT LAKE CITY INTL (SLC)

<p><b>▽</b> DME or RADAR required. Simultaneous approach authorized. For inop ALS, increase S-ILS 17 Cat E visibility to RVR 4000, increase S-LOC 17 Cat C/D/E visibility to 1<math>\frac{1}{2}</math> SM.</p>	<p>MALSRR </p>	<p><b>MISSED APPROACH:</b> Climb to 5800 then climbing left turn to 10000 direct FFU VORTAC and hold.</p>
--	---	---

D-ATIS <b>124.75 125.625</b>	SALT LAKE CITY APP CON <b>125.7 284.6</b>	SALT LAKE CITY TOWER <b>118.3 257.8</b>	GND CON <b>121.9 348.6</b>	CLNC DEL <b>127.3 379.975</b>	CPDLC
---------------------------------	--	--	-------------------------------	----------------------------------	-------



CATEGORY	A	B	C	D	E
S-ILS 17	4419/18 200 (200- $\frac{1}{2}$ )				
S-LOC 17	4700/24	481 (500- $\frac{1}{2}$ )	4700/50 481 (500-1)		

SW-4, 21 MAR 2024 to 18 APR 2024

SW-4, 21 MAR 2024 to 18 APR 2024