

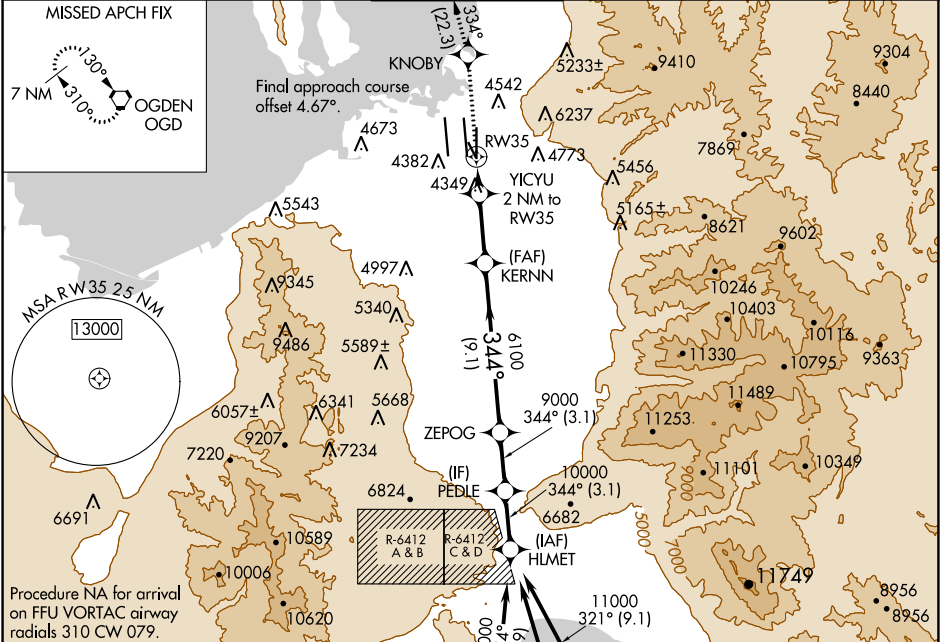
WAAS CH 42843 W35A	APP CRS 344°	Rwy Idg TDZE Apt Elev	9272 4227 4231
--	------------------------	-----------------------------	---

RNAV (GPS) RWY 35

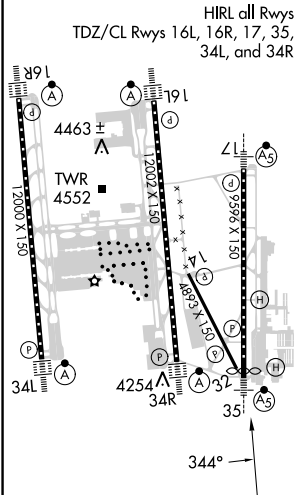
SALT LAKE CITY INTL (SLC)

RNP APCH - GPS.	MALS/R	MISSED APPROACH: Climb to 9000 direct KNOBY and on track 334° to OGD VORTAC and hold.
▼ For inop ALS, increase LP Cat C, D and E visibility to RVR 5500, increase LNAV Cat E visibility to 1½ SM.		

D-ATIS 124.75 125.625	SALT LAKE CITY APP CON 125.7 284.6	SALT LAKE CITY TOWER 118.3 257.8	GND CON 121.9 348.6	CLNC DEL 127.3 379.975	CPDLC
---------------------------------	--	--	-------------------------------	----------------------------------	-------

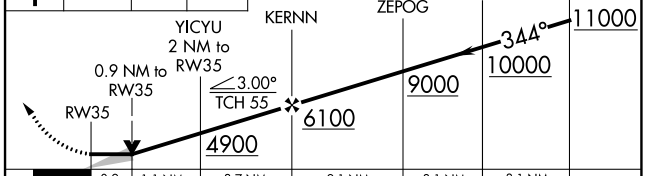


ELEV 4231	D	TDZE 4227
------------------	----------	------------------



HIRL all Rwys TDZ/CL Rwys 16L, 16R, 17, 35, 34L, and 34R	(IAF) HLMET	(IAF) BLUPE	(IAF) BOAGY
R-6412 A & B	R-6412 C & D	11000 321° (9.1)	11000 334° (3.1)

9000	KNOBY	OGD	VGSI and descent angles not coincident (VGSI Angle 3.00/TCH 74).
↑		tr 334°	



CATEGORY	A	B	C	D	E
LP MDA	4600/24	373 (400-½)	4600/35	373 (400-½)	
LNAV MDA	4760/24	533 (600-½)	4760/55	533 (600-1)	