

SPANE SEVEN ARRIVAL

AL-365 (FAA)

SALT LAKE CITY INTL (SLC)
SALT LAKE CITY, UTAH

SW-4, 21 MAR 2024 to 18 APR 2024

ARRIVAL ROUTE DESCRIPTION

HELPR TRANSITION (HELPR.SPANE7): From over HELPR via FFU R-100 SPANE, thence

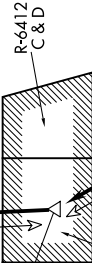
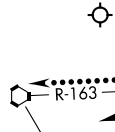
MEEKER TRANSITION (EKR.SPANE7): From over EKR VOR/DME via EKR R-258 to RACER, then via EKR R-258 and MTU R-078 to MTU VOR/DME, then via MTU R-255 to SPANE, thence

LANDING NORTH: . . . from SPANE on FFU R-100 to BOAGY, then to FFU VORTAC. Expect ILS RWY 34R approach.

LANDING SOUTH: . . . from SPANE on FFU R-100 to BOAGY, then to FFU VORTAC, then via FFU R-314 to DRYVE, then via OGD R-163 to CHHIP. After CHHIP, fly heading 345° for vectors to ILS or Visual RWY 16R approach.

LOST COMMUNICATIONS: LANDING SOUTH: In the event of lost communications, at CHHIP INT proceed direct OGD VORTAC. Maintain 12000 until OGD VORTAC.

SALT LAKE CITY APP CON
128.6 322.3
D-ATIS
124.75 125.625



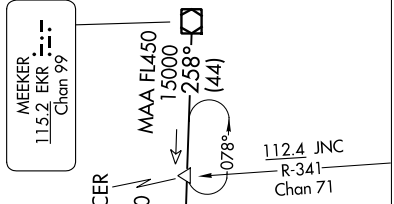
R-6412A to 9000,
R-6412B 9000 to 10000
by NOTAM
Salt Lake City Tower

FAIRFIELD
116.6 FFU
Chan 113

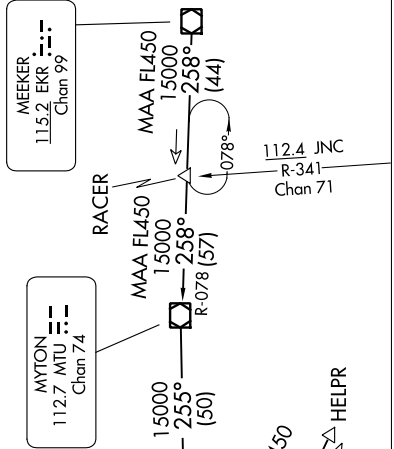
SPANE
PROP/TURBOPROP
LANDING NORTH: Expect 16000
LANDING SOUTH: Expect 17000

TURBOJET
LANDING NORTH: Expect 16000
LANDING SOUTH: Expect FL190

NOTE: DME required.
NOTE: Chart not to scale.



MYTON
112.7 MTU
Chan 74



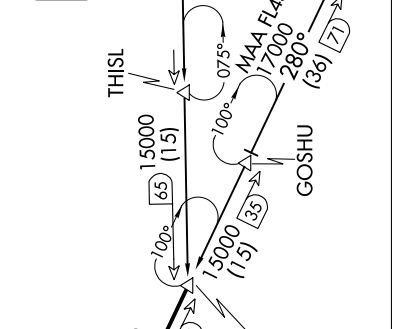
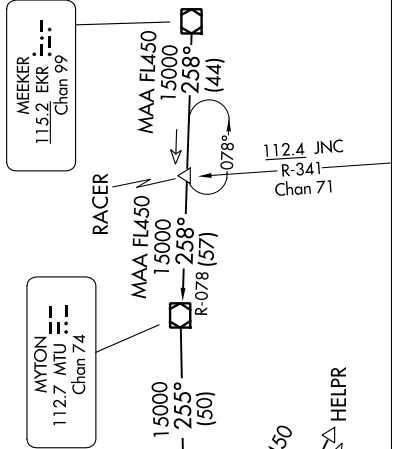
THISL

GOSHU

MAA FL450

MAA FL450

RACER



SPANE SEVEN ARRIVAL

(SPANE.SPANE7) 17AUG17

SALT LAKE CITY, UTAH
SALT LAKE CITY INTL (SLC)

SW-4, 21 MAR 2024 to 18 APR 2024