

(ZIONZ1.ZIONZ) 19283

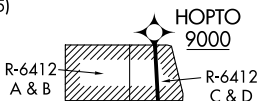
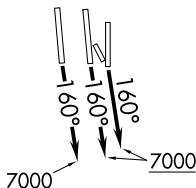
# ZIONZ ONE DEPARTURE (RNAV)

AL-365 (FAA)

SALT LAKE CITY INTL (SLC)  
SALT LAKE CITY, UTAH

D-ATIS  
124.75 125.625  
CLINC DEL  
127.3 379.975  
CPDLC  
GND CON  
121.9 348.6 (Rwys 14-32, 17-35)  
123.775 348.6 (Rwys 16L-34R, 16R-34L)  
SALT LAKE CITY TOWER  
119.05 257.8 (Rwy 16L-34R)  
118.3 257.8 (Rwys 14-32, 17-35)  
132.65 336.4 (Rwy 16R-34L)  
SALT LAKE CITY DEP CON  
128.6 322.3

**TOP ALTITUDE:  
FL230**



### TAKEOFF MINIMUMS

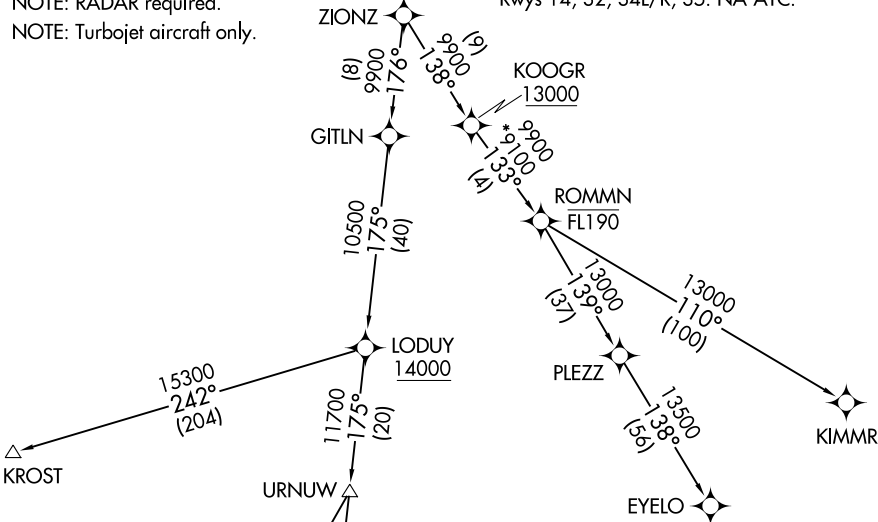
Rwys 16L/R, 17: Standard with a minimum climb of 300' per NM to 7000.  
Rwys 14, 32, 34L/R, 35: NA-ATC.

NOTE: RNAV 1.

NOTE: GPS required.

NOTE: RADAR required.

NOTE: Turbojet aircraft only.



### DEPARTURE ROUTE DESCRIPTION

**TAKEOFF RUNWAYS 16L/R, 17:** Climb on heading 160° to 7000 then as assigned by ATC, thence. . . .

. . . .on RADAR vectors to cross HOPTO at or above 9000, then on track 166° to ZIONZ, then on (transition). Maintain FL230 or lower filed altitude. Expect filed altitude 10 minutes after departure.

BRYCE CANYON TRANSITION (ZIONZ1.BCE)

ENOCH TRANSITION (ZIONZ1.EHK)

EYEO TRANSITION (ZIONZ1.EYEO)

KIMMR TRANSITION (ZIONZ1.KIMMR)

KROST TRANSITION (ZIONZ1.KROST)

NOTE: Chart not to scale.

# ZIONZ ONE DEPARTURE (RNAV)

(ZIONZ1.ZIONZ) 24MAY18

SALT LAKE CITY, UTAH  
SALT LAKE CITY INTL (SLC)

SW-4, 21 MAR 2024 to 18 APR 2024

SW-4, 21 MAR 2024 to 18 APR 2024