

BOWIE SEVEN DEPARTURE

ATIS
128.8
CLNC DEL (When twr closed)
121.7
GND CON
121.7 379.9
SAN ANTONIO DEP CON
125.7 290.225
STINSON TOWER*
118.2 379.9

SAN ANTONIO
116.8 SAT
Chan 115
N29°38.64'
W98°27.68'

YENNS
N29°04.08'
W98°19.32'

COTULLA
115.8 COT
Chan 105

MILET
N28°43.83'
W98°47.88'

THREE RIVERS
111.4 THX
Chan 51
N28°30.30'
W98°09.03'
L-20, H-7

CORPUS CHRISTI
115.5 CRP
Chan 102
N27°54.22'
W97°26.69'
L-20-21, H-7

LAREDO
117.4 LRD
Chan 121
N27°28.72'
W99°25.06'
L-20, H-7

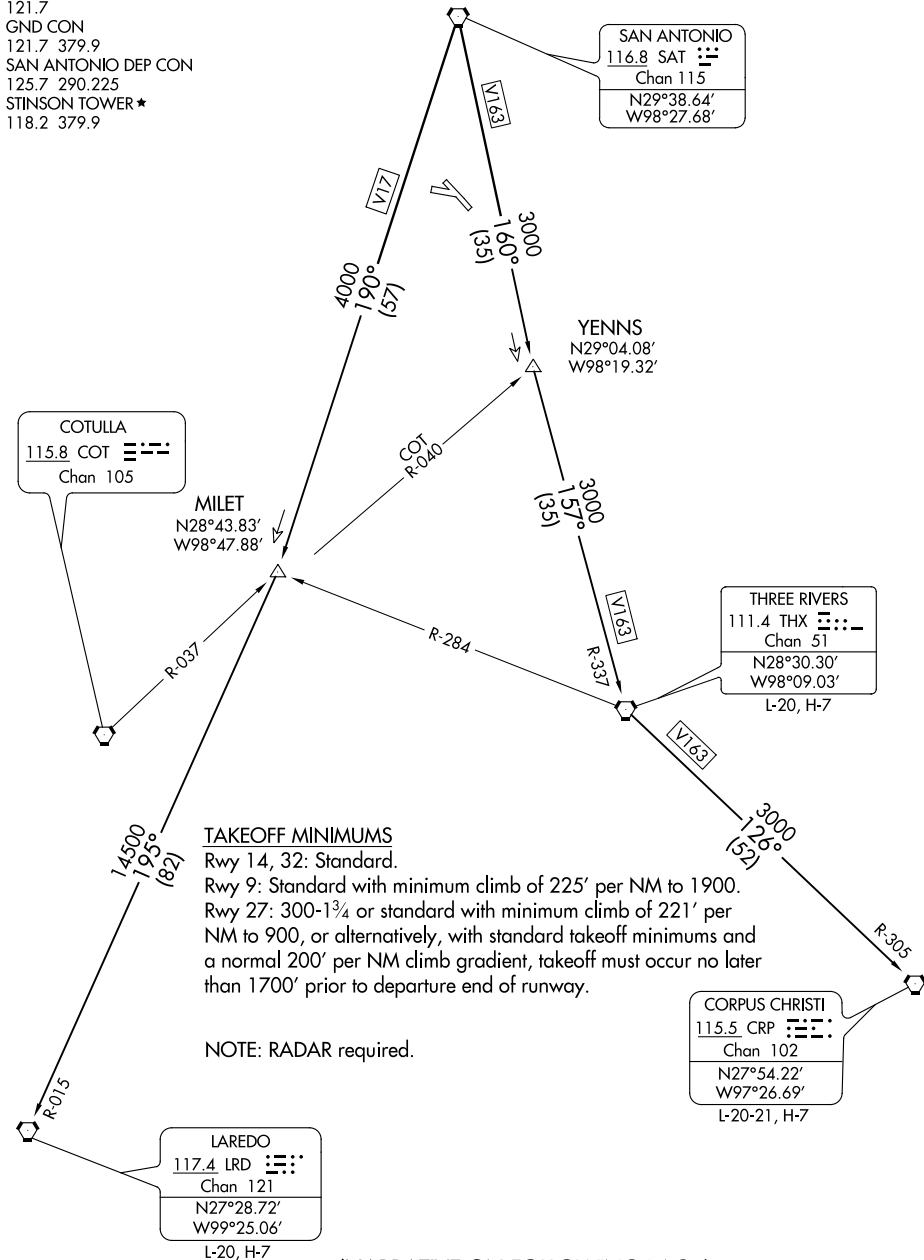
TAKEOFF MINIMUMS

Rwy 14, 32: Standard.

Rwy 9: Standard with minimum climb of 225' per NM to 1900.

Rwy 27: 300-1³/₄ or standard with minimum climb of 221' per NM to 900, or alternatively, with standard takeoff minimums and a normal 200' per NM climb gradient, takeoff must occur no later than 1700' prior to departure end of runway.

NOTE: RADAR required.



NOTE: Chart not to scale

(NARRATIVE ON FOLLOWING PAGE)

BOWIE SEVEN DEPARTURE